



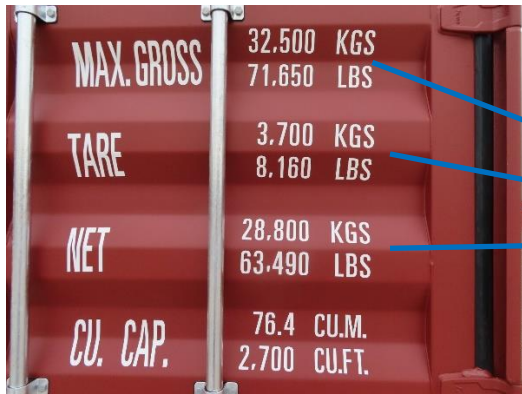
EQUIPMENT CODE STANDARD “ECS”

Revised 7 June 2023

Dry Van Container – component codes, reference guide.

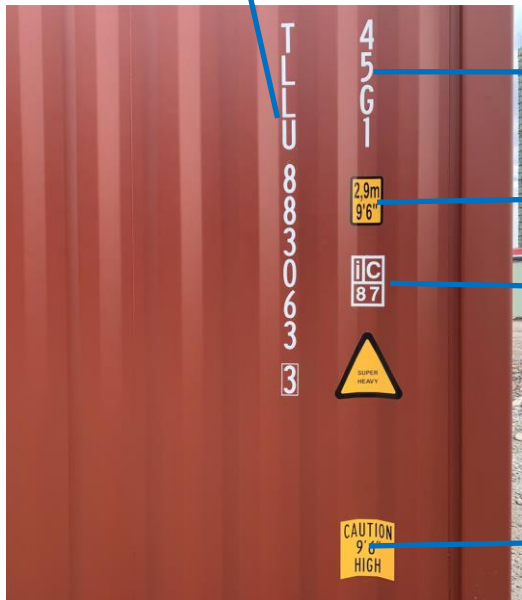
Luiz Goncalves
technical@iiicl.org





**Mass Markings
MMI**

**Serial Number
& Check Digit
MSN**



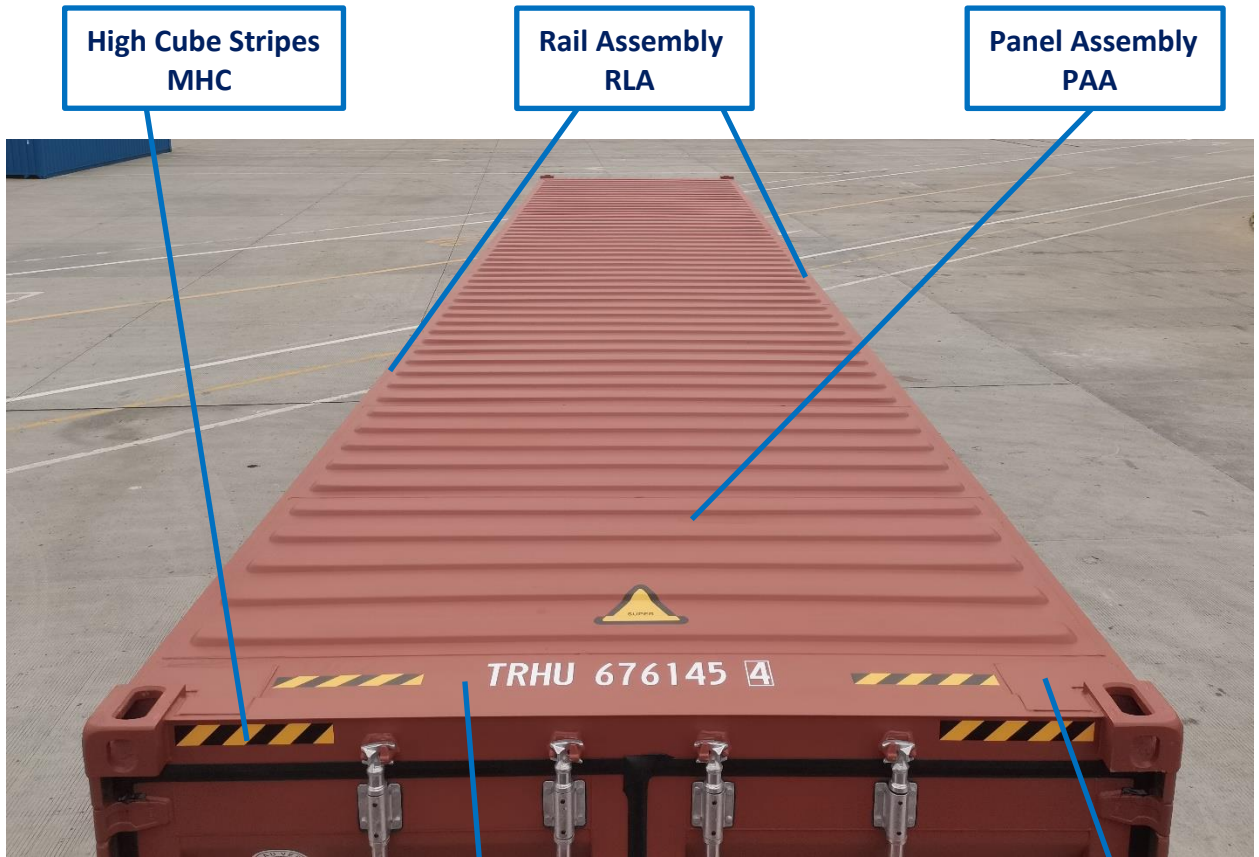
**Size & Type
Markings
MST**

**Height Markings
MHT**

**UIC Decal
MUI**

**Height Caution Markings
MCH**





High Cube Stripes
MHC

Rail Assembly
RLA

Panel Assembly
PAA

Header Extension Plate
HEP

Roof Corner Gusset
RCG

High Cube Stripes
MHC

Cam Keeper
RCK

Rail Assembly
RLA





**Rail Corner
Protector Recess
RCI**

**Cam Keeper
RCK**

**Rail Assembly
RLA**

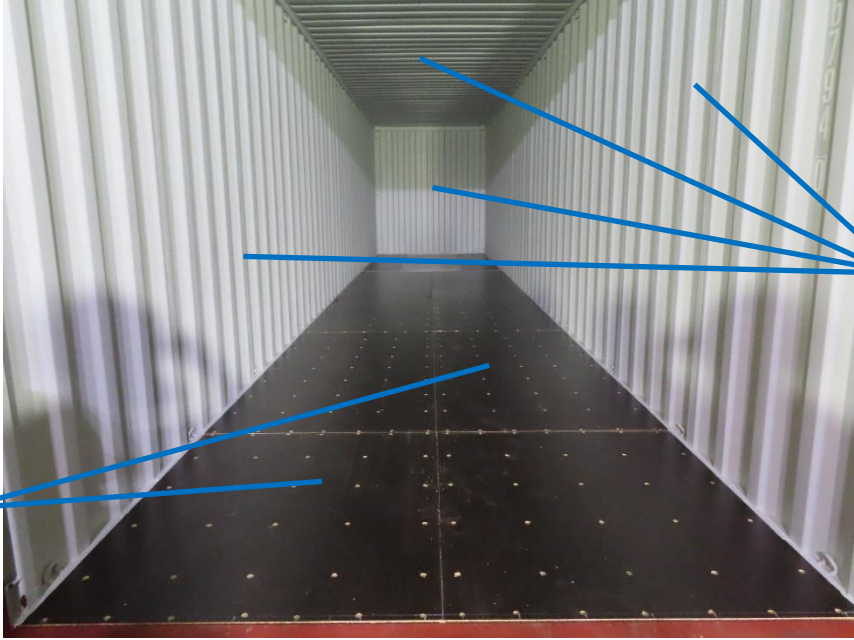
**Plywood /
Bamboo Panel
FPP**

**Hardware
HWR**



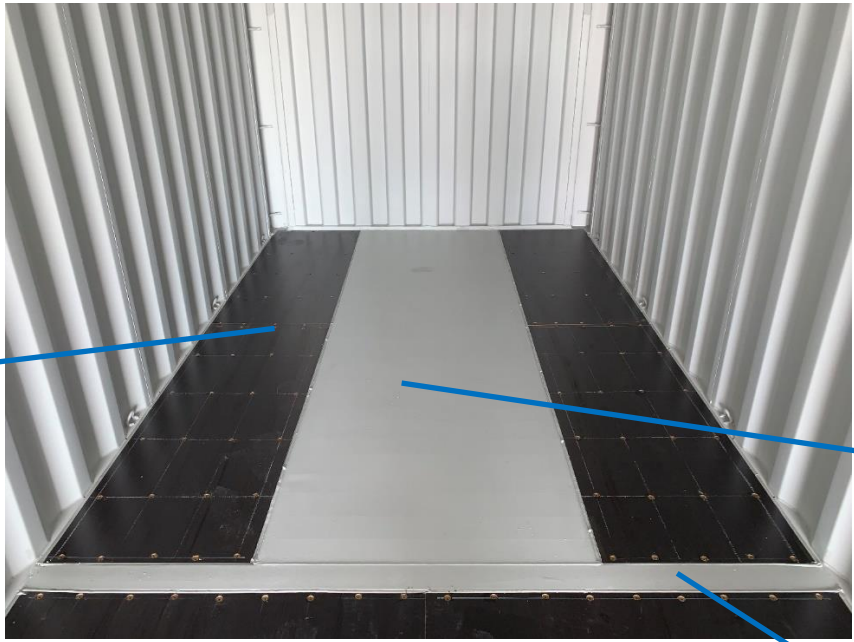
**Floor Support Angle
FSA**

**Hat Section or Floor
Center Support
FHS**



Plywood /
Bamboo Panel
FPP

Panel Assembly
PAA

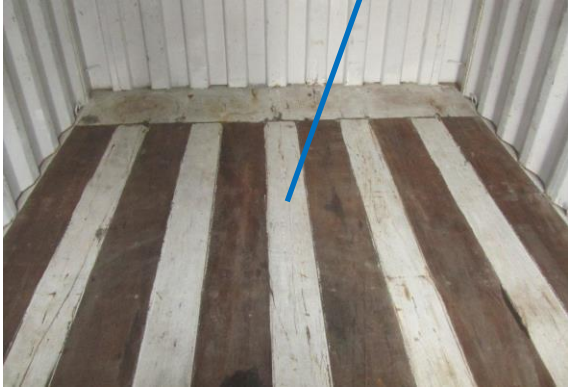


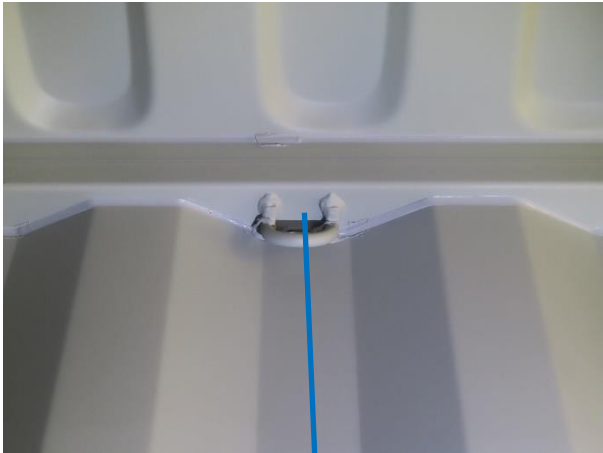
Plywood /
Bamboo Panel
FPP

Tunnel Plate
TUP

Tunnel Bolster
TUB

**Steel Plate Combination Floor
FSP**





**Lashing Ring
LSR**



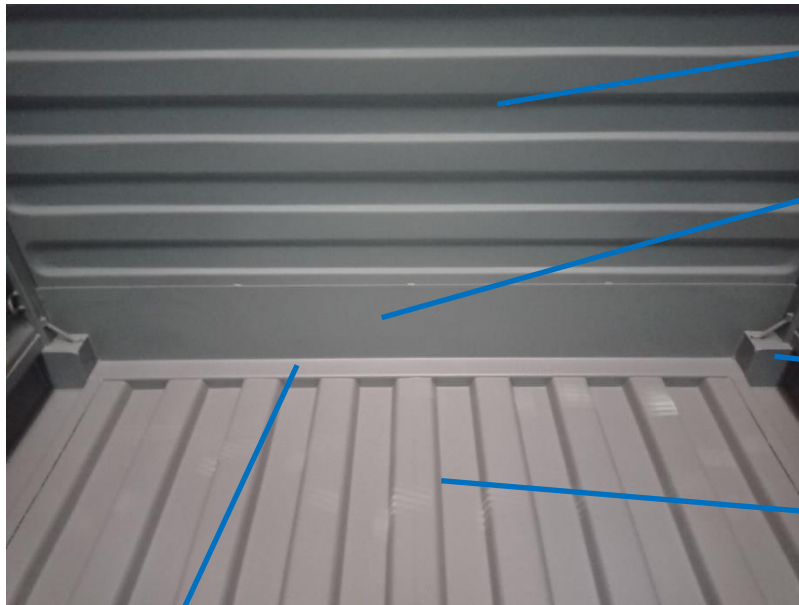
**Lashing Ring
LSR**

**Lashing Bar
LSB**



**Lashing Bar
LSB**

**Lashing Ring
LSR**



Panel Assembly
PAA

Header Extension Plate
HEP

Corner Fitting
CFG

Panel Assembly
PAA

Rail assembly
RLA

Corner Fitting
CFG

Rail Doubling Plate
RDP

Rail Assembly
RLA



Rail Gusset
RLG



**Crossmember
Gusset
RLG**



**Tunnel bolster
Gusset
RLG**



**Crossmember Assembly
CMA**

**Tunnel Bolster
TUB**

**Tunnel Rail
RTL**

**Tunnel
Crossmember
TUC**

**Tunnel Plate
TUP**

**Outrigger
CMO**



**Crossmember Assembly
CMA**



**Forklift Pocket Strap
FLS**

**Forklift Pocket whole
transverse section
FLT**

**Forklift Pocket Top Plate
FLP**

**Forklift Pocket whole
transverse section
FLT**



**Forklift Pocket Strap
FLS**

**Door Chain Hook
DRH**

**Rail Assembly
RLA**

Forklift Pocket Assembly / FLA

Forklift Pocket Strap - FLS

Forklift Pocket whole transverse section - FLT

Forklift Pocket Top Plate - FLP

Locking Bar Bracket
LBB

Locking Bar Cam
LBC

High Cube Stripes
MHC

Marking Single digit
MSD

Locking Bar Rod
LBR

Locking Bar Guide
LBG

Door Stop or Slam Plate
DPL

Consolidated Data Plate
MPD

Hinge Assembly
HGA

Corner Post J-Bar
CPJ

Hinge Blade
HGB

Door handle Lock Assembly
DHL

Locking Bar Handle
LBH

Locking Bar Lug
LBL

Door Retainer Holdback
DRT

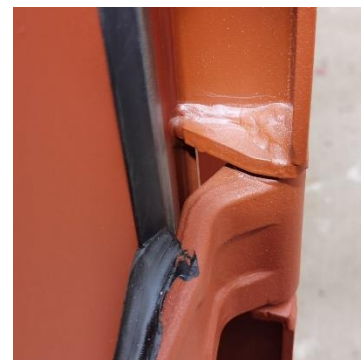
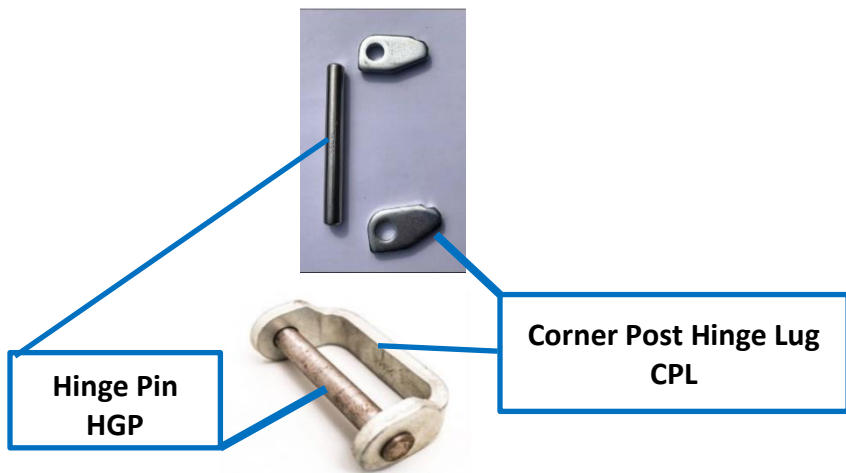
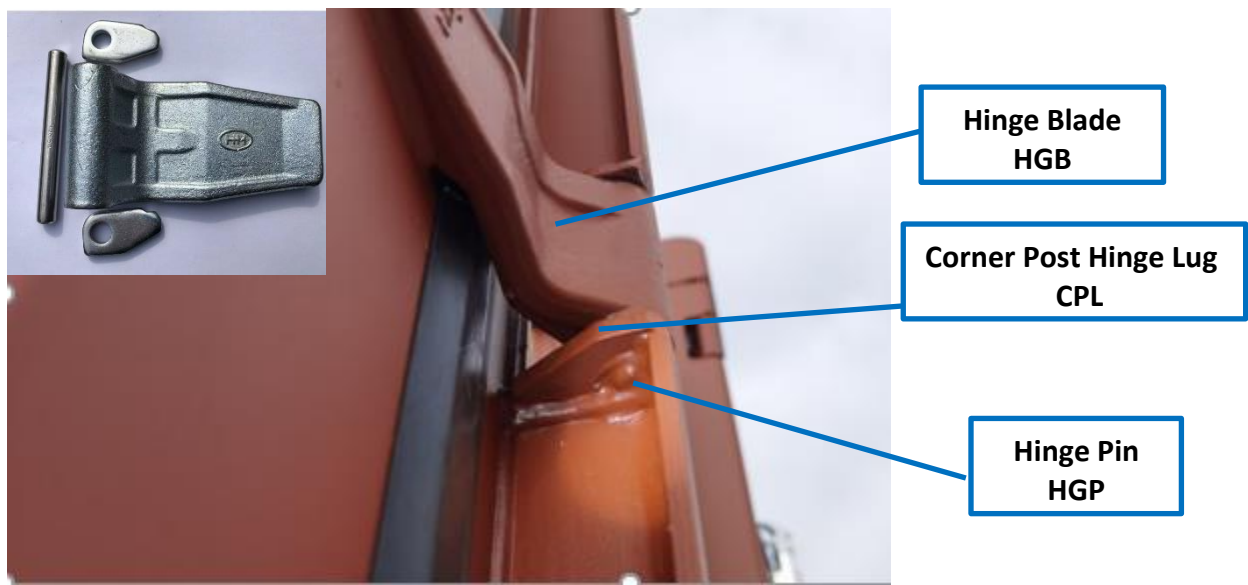
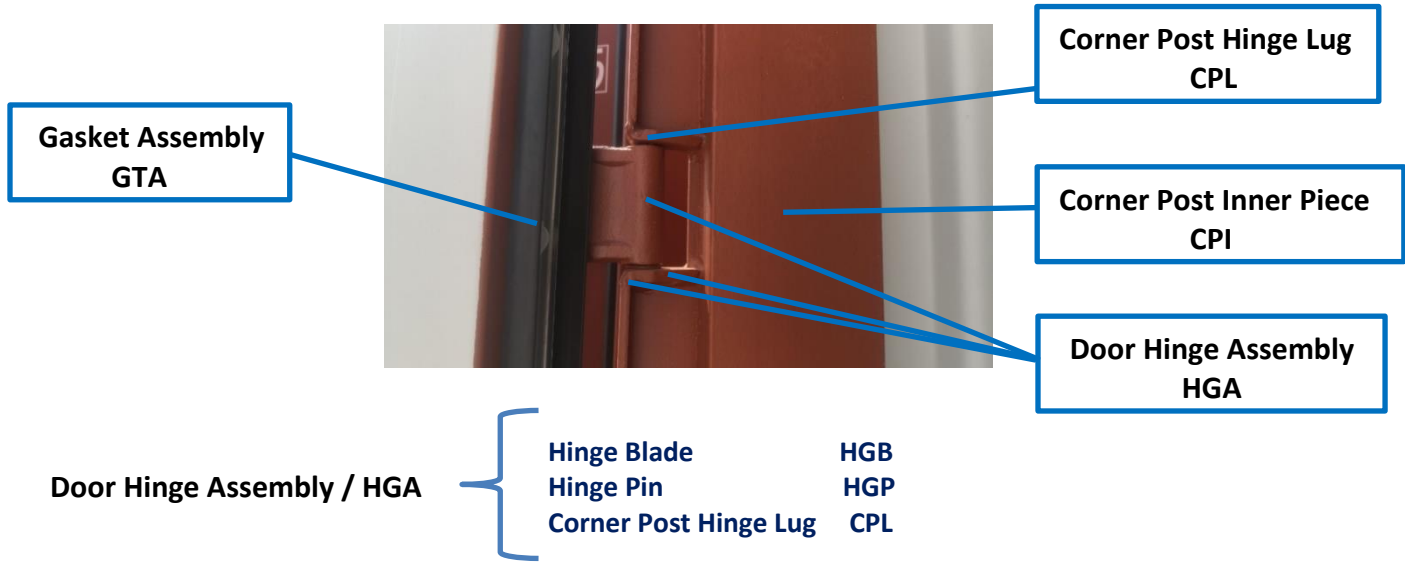


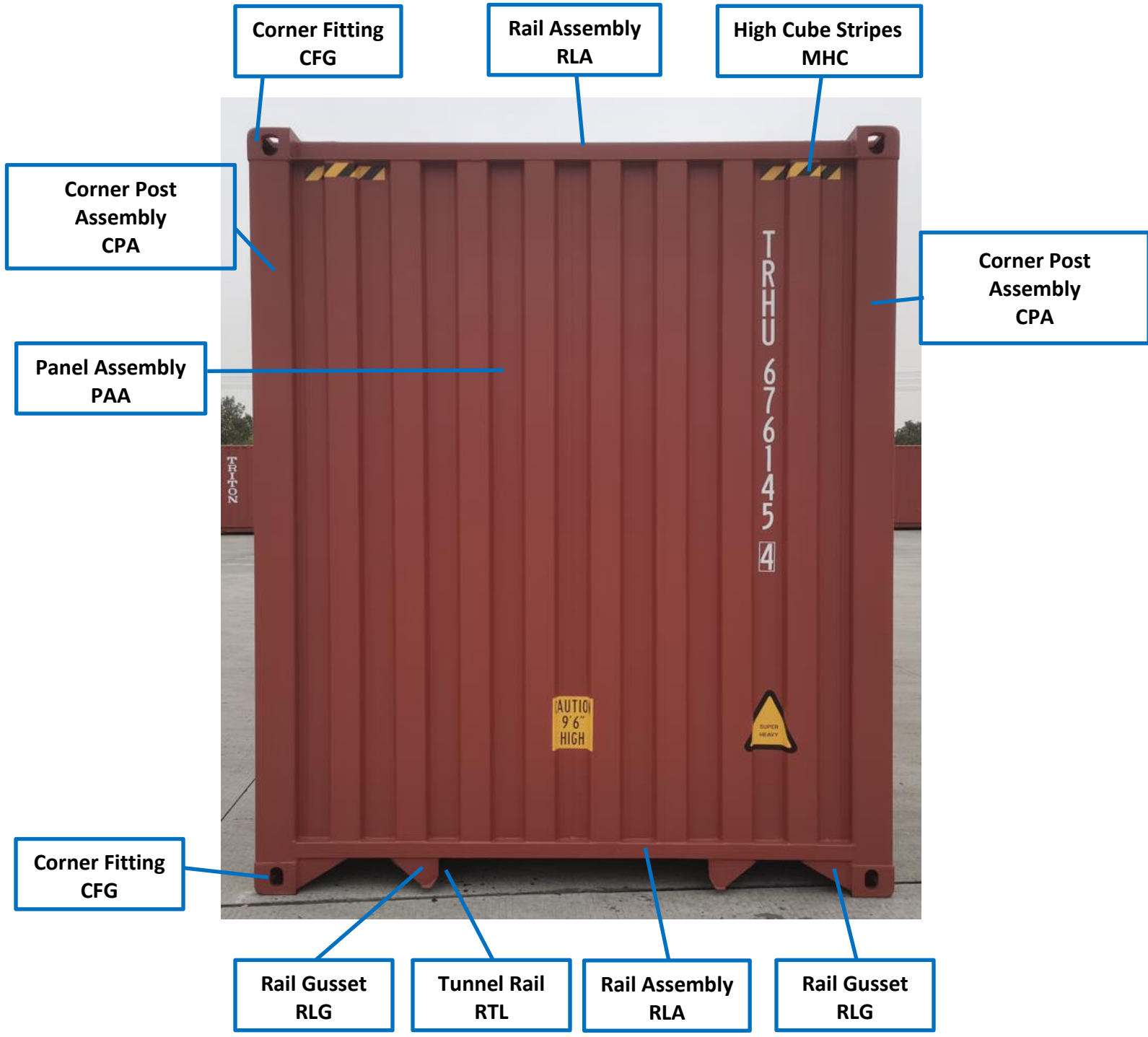


**Door Retainer –
Holdback Cord/Cable
DRT**



**Door Chain Hook
DRH**







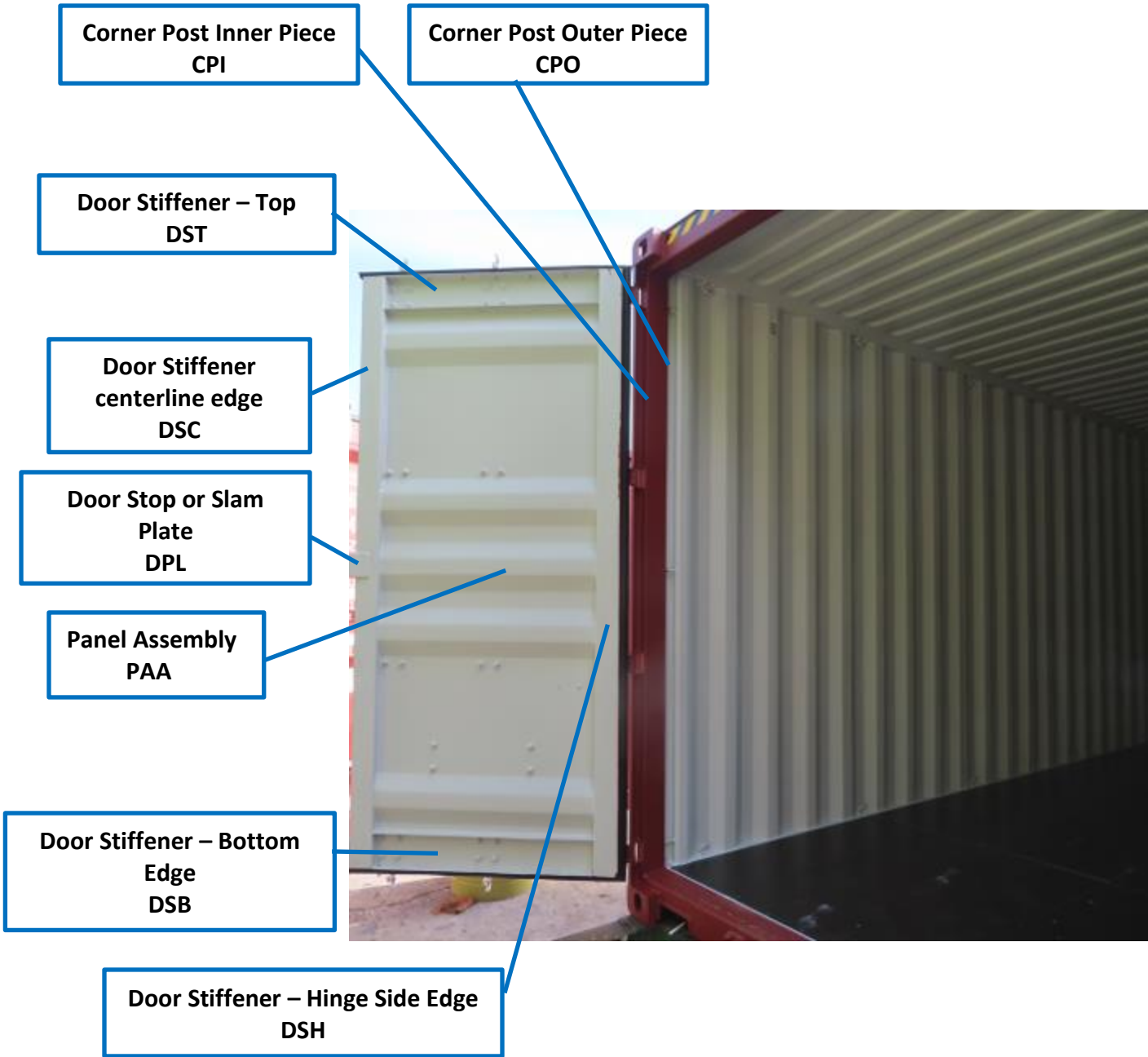
**Hinge Blade
HGB**

**Door Stop or Slam
Plate
DPL**

**Consolidated Data
Plate
MPD**

**Gasket Assembly
GTA**

**Gasket Retainer Strip
GRS**

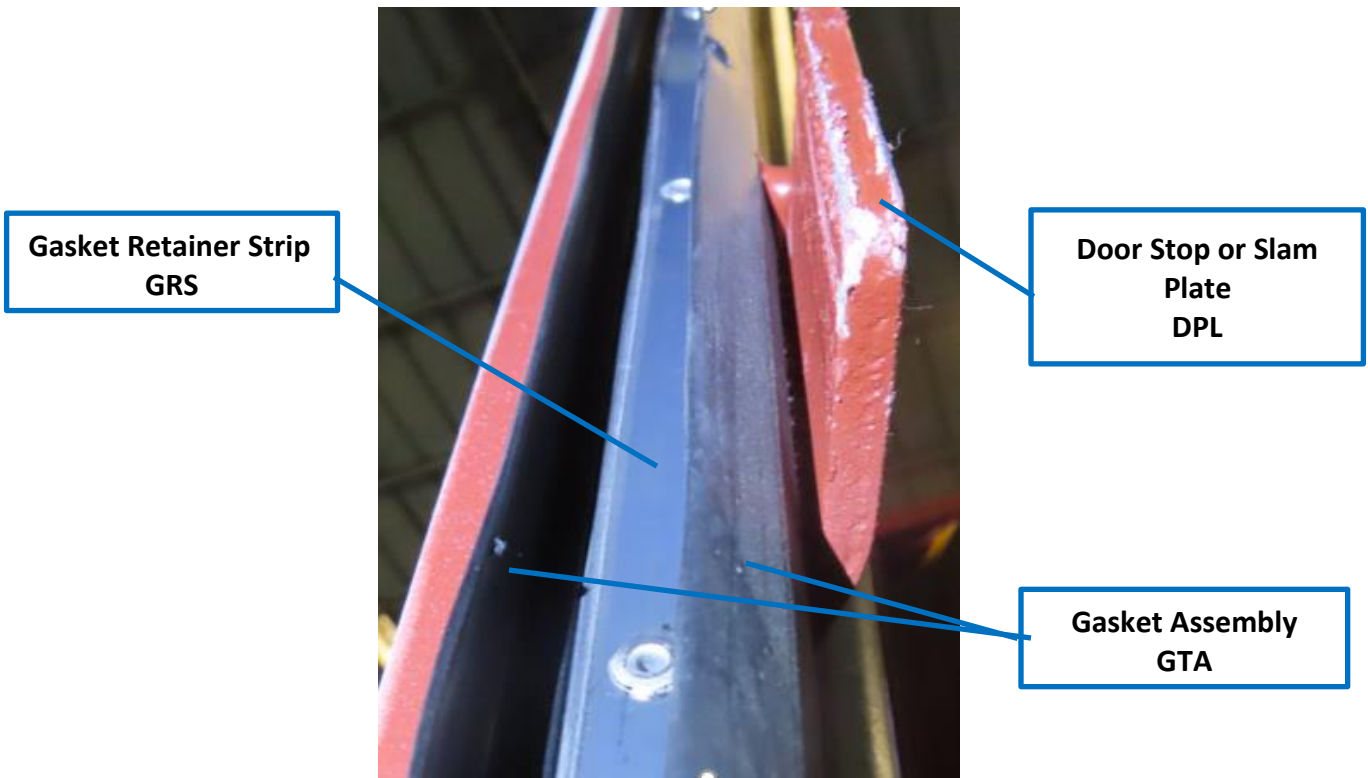
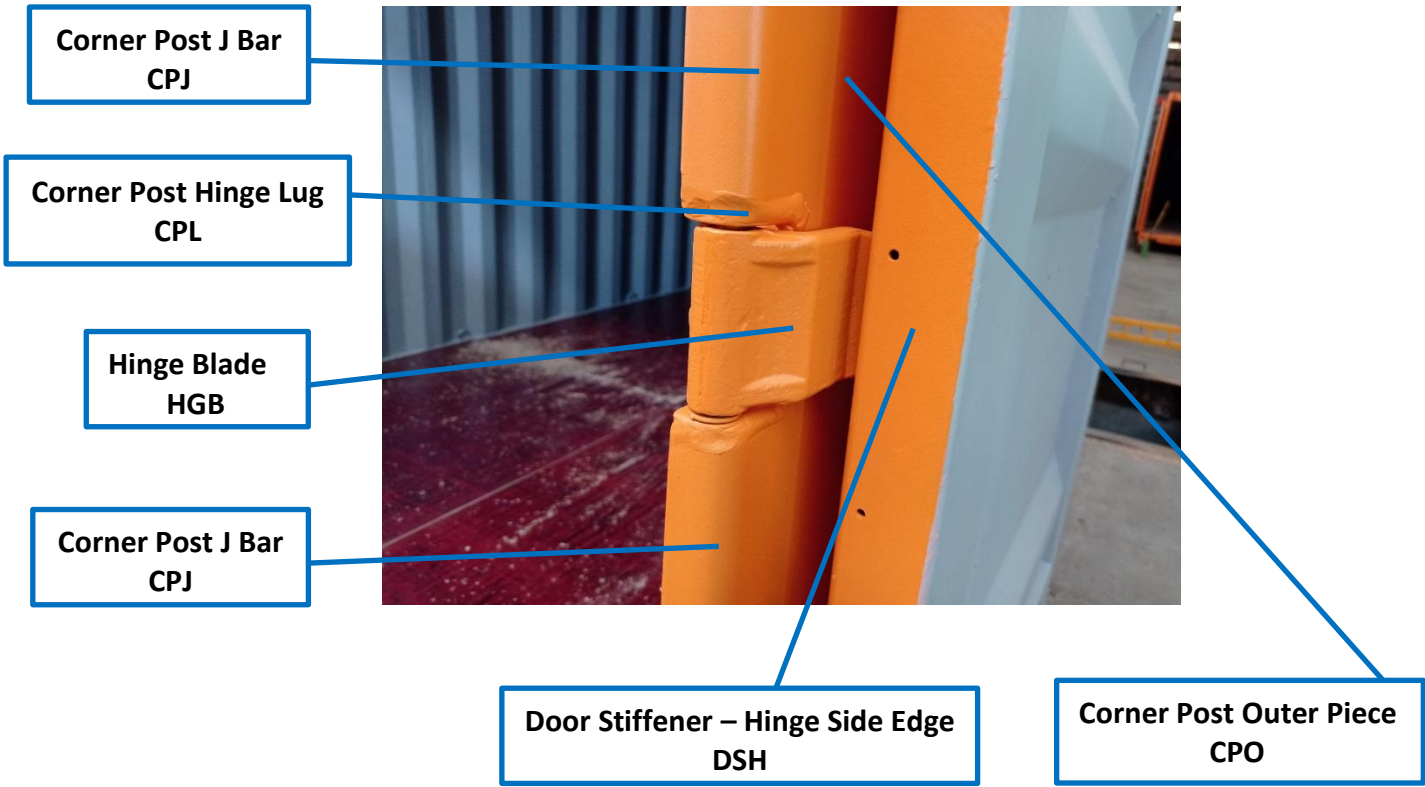


Door frame assembly / DFA

- Door Stiffener centerline edge - DSC
- Door Stiffener hinge Side Edge - DSH
- Door Stiffener bottom edge - DSB
- Door Stiffener top - DST

Corner Post Assembly / CPA

- Corner Post Inner Piece - CPI
- Corner Post Outer Piece - CPO



**Door Stiffener – Top
DST**

**Hardware
HWR**

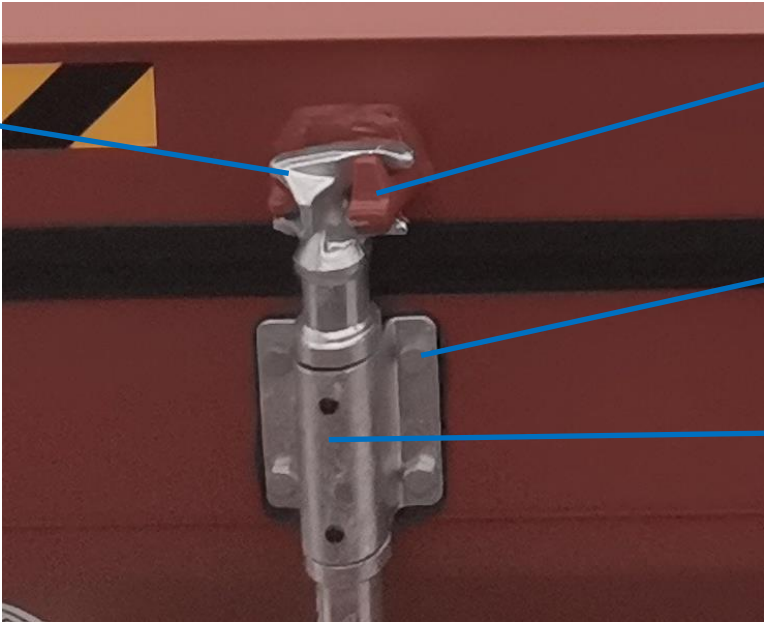


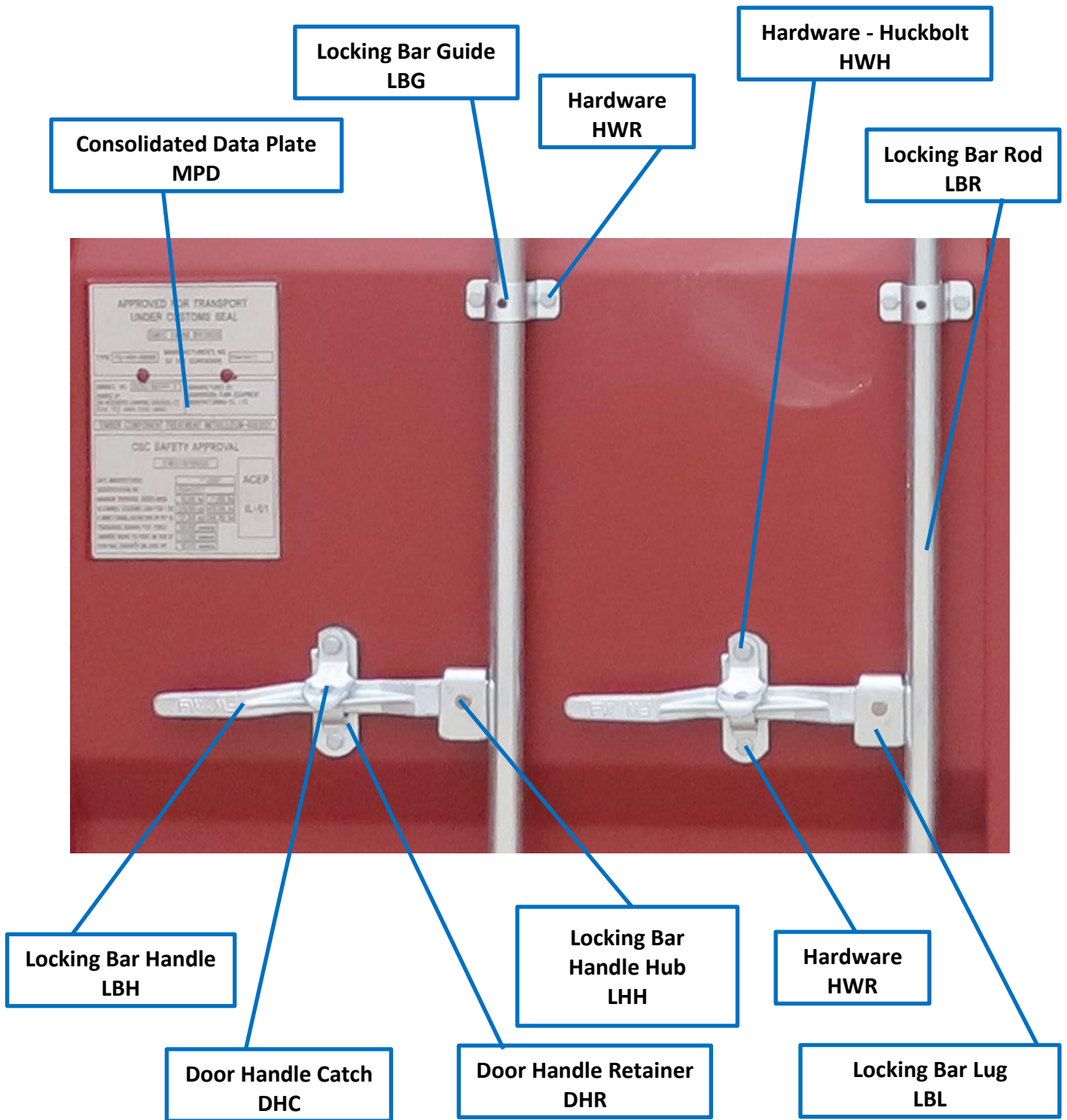
**Locking Bar Cam
LBC**

**Cam Keeper
RCK**

**Hardware
HWR**

**Locking Bar Bracket
LBB**

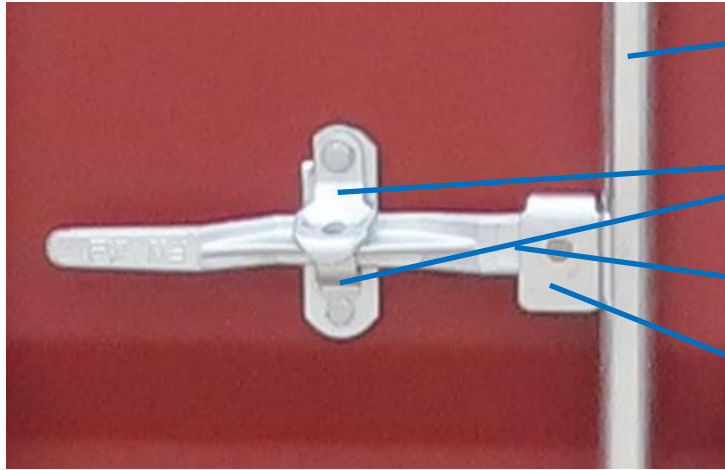




Locking Bar Handle Hub
LHH



Locking Bar Lug
LBL



**Locking Bar Rod
LBR**

**Door Handle Lock Assembly
DHL**

**Locking Bar Handle Hub
LHH**

**Locking Bar Lug
LBL**

Door Handle Lock Assembly / DHL



Door Handle Retainer DHR
Door Handle Catch DHC



**Door Retainer –
Holdback Cord/Cable
DRT**



**Consolidated Data Plate
MPD**



**Corner Post Reinforcement
CPR**



Palletwide Containers

**Corner Fitting
CFG**



**Corner Fitting
CFG**

**Width Caution Marking
MCW**



**Rail Grapppler Pocket
RGP**



**Rail Casting Plate
RCP**

**Corner Post Assembly
CPA**



**Corner Post Assembly
CPA**

**Rail Grapppler Pocket
RGP**

**Corner Fitting
CFG**

**Width Caution Marking
MCW**



Palletwide Container



Open Top Containers



**TNA
Tarpaulin Assembly**



**TNG
Tarpaulin Grommet**

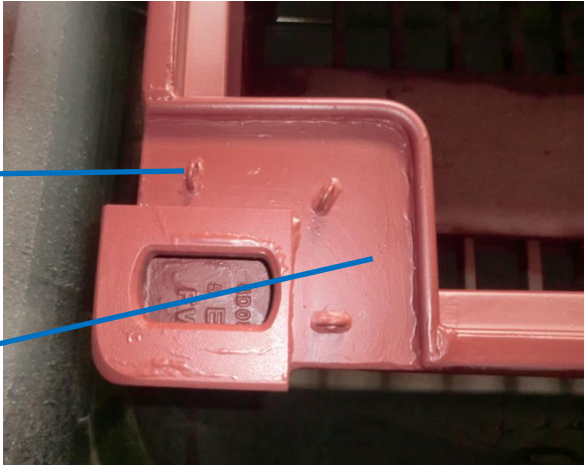
**TIC
TIR Cord**



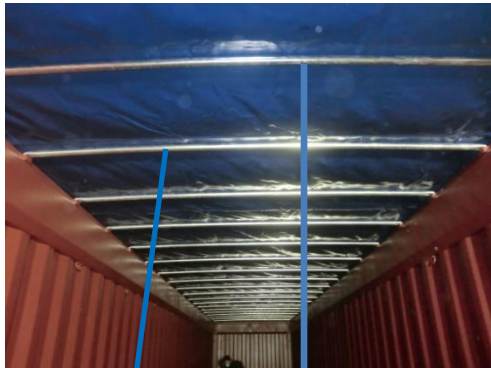
**TIR
TIR Cord Ring**

**TNG
Tarpaulin Grommet**

TIC
TIR Cord Ring



RWB
Water Box / Drain Pan



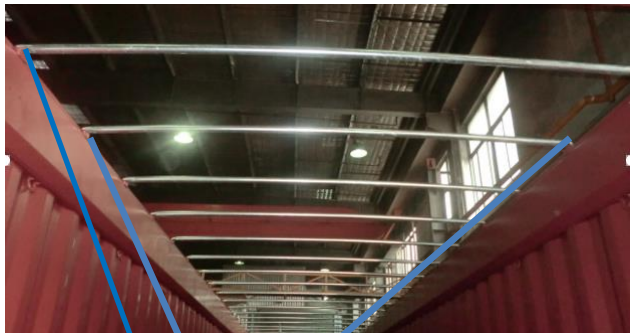
RBO
Roof Bow



RBO
Roof Bow



RBH
Roof Bow Holder



RBH
Roof Bow Holder

**TNA
Tarpaulin Assembly**

**RBH
Roof Bow Holder**



**RBO
Roof Bow**



**TNS
Tarpaulin - Customs Sealing Point**



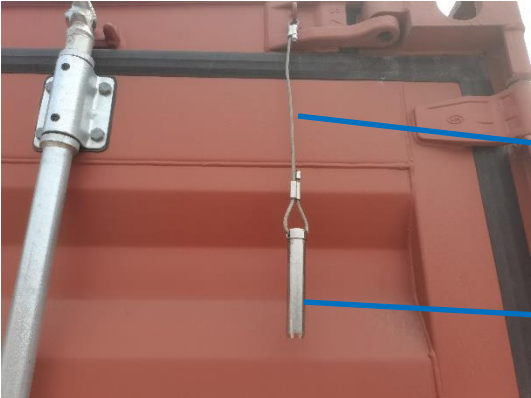
**TNS
Tarpaulin - Customs Sealing Point**

**RRT
Removable/Swinger Header**



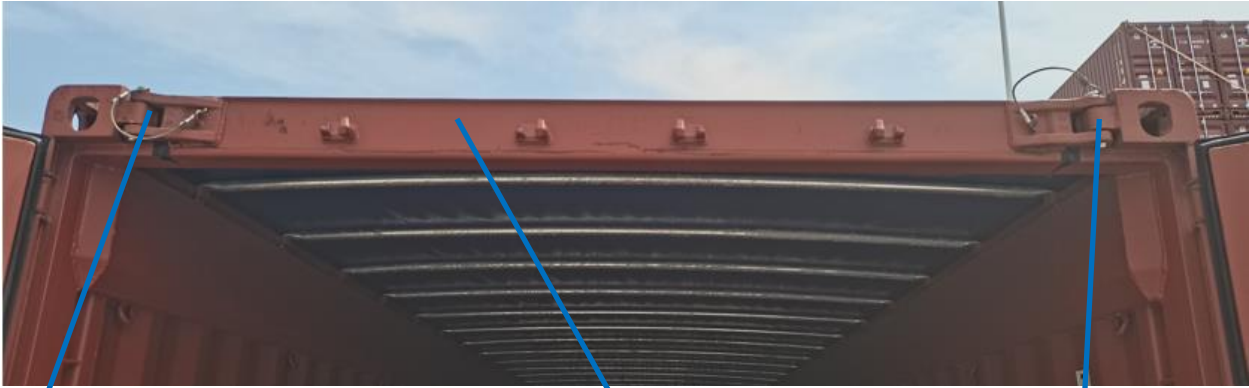
**HPC
Header Pin Chain**

**HRP
Header Pin**



**HPC
Header Pin Chain**

**HRP
Header Pin**

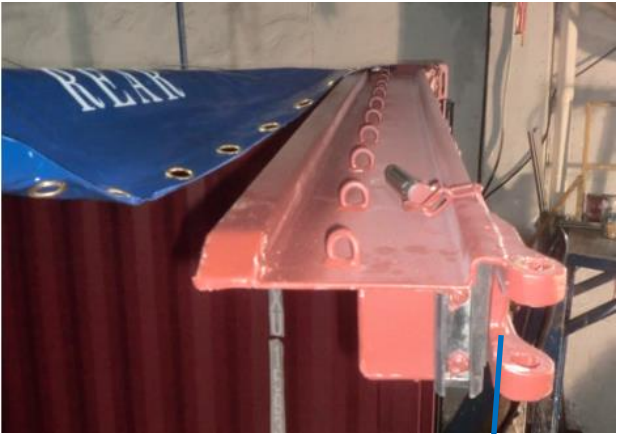
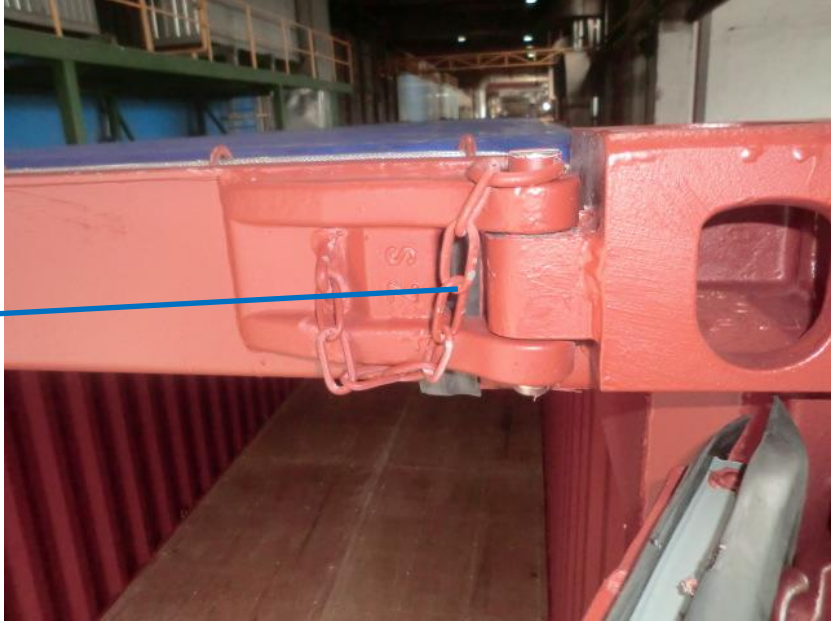


**RHH
Swinger Header Hinge**

**RRT
Removable/Swinger Header**

**RHH
Swinger Header Hinge**

**HPC
Header Pin Chain**



**RHH
Swinger Header Hinge**



**RHH
Swinger Header Hinge**