



EQUIPMENT CODE STANDARD “ECS”.

Refrigerated Containers – Component codes, reference guide.

Version December 4, 2024.

IICL workgroup:

SEACO

**Chai Wah Koh
Hendry Xu
Jos Vanstiphout**

**SEACUBE
TEXTAINER**

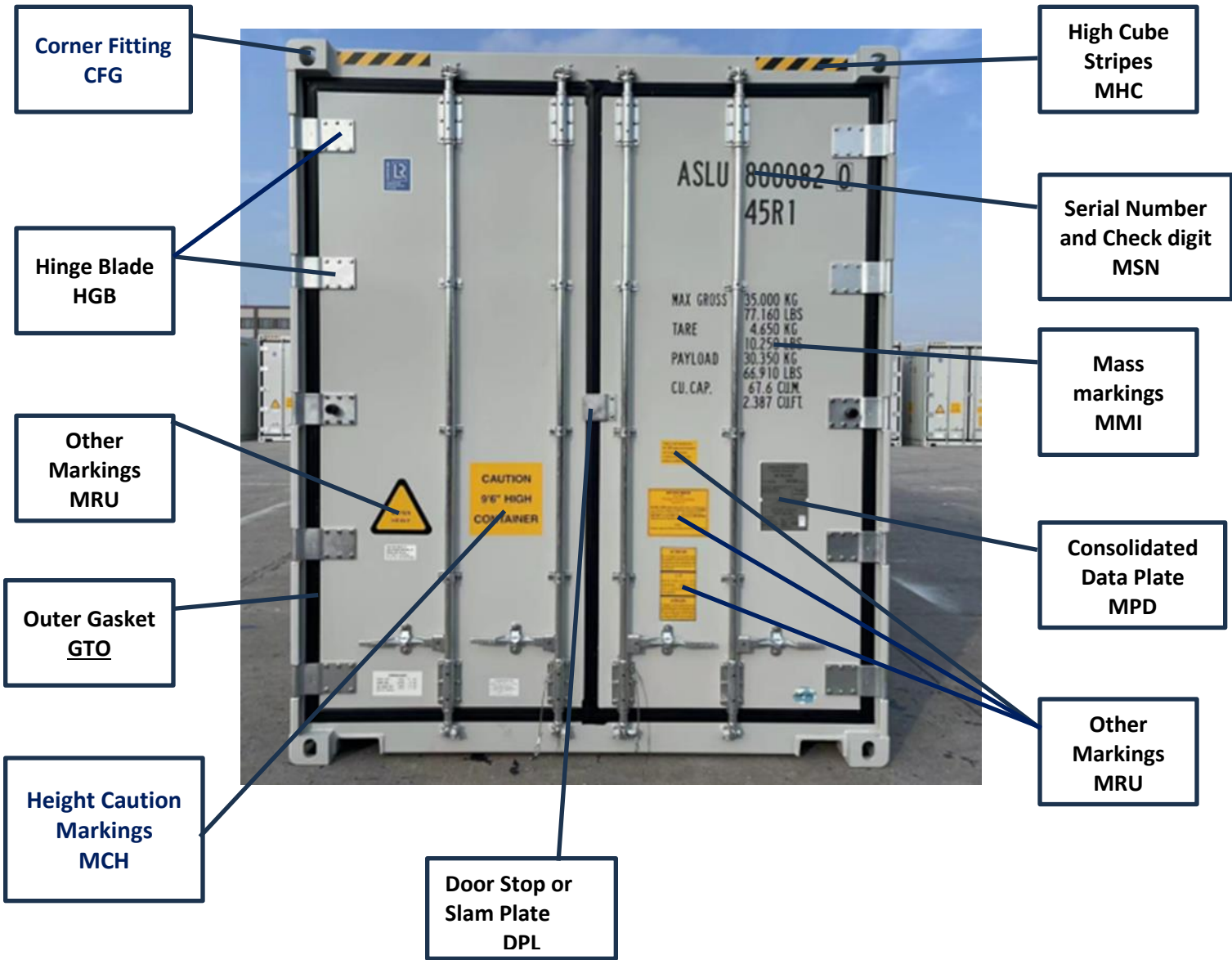
**Jorge Dias
Alessandro Caldon
Peter Brandon**

TRITON

**Dennis Van Hal
Stijn Doffyn
Toni Jakat**

IICL:

**Luiz Gonçalves
technical@iicl.org**



**Corner Fitting
CFG**

**High Cube
Stripes
MHC**

**Hinge Blade
HGB**

**Serial Number
and Check digit
MSN**

**Other
Markings
MRU**

**Mass
markings
MMI**

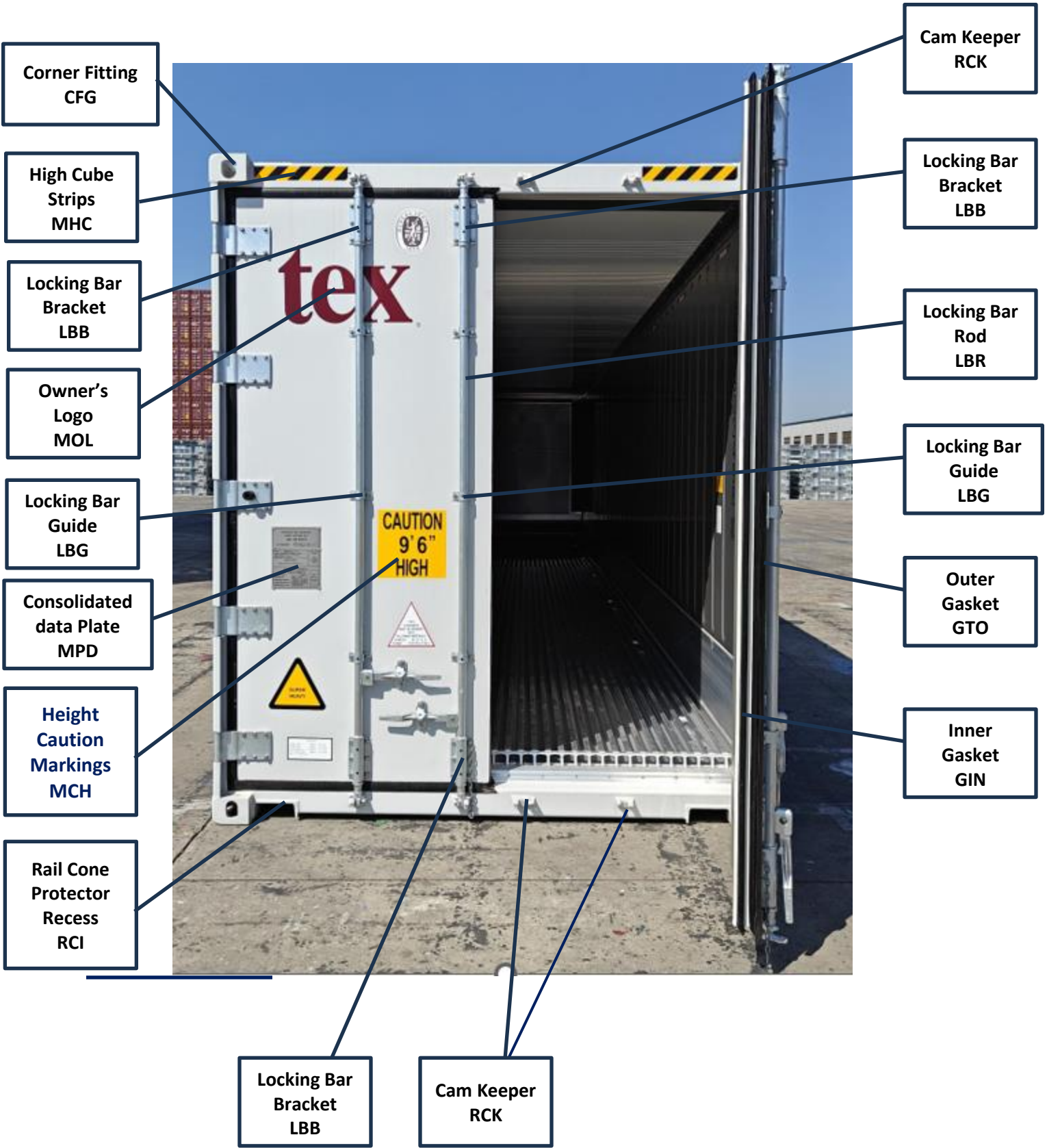
**Outer Gasket
GTO**

**Consolidated
Data Plate
MPD**

**Height Caution
Markings
MCH**

**Other
Markings
MRU**

**Door Stop or
Slam Plate
DPL**



**Rail Cone
Protector
Recess
RCI**

**T-Floor
Drain
TFD**



**Panel Inner
Cladding
PIC**

**Corner Post
J-bar
CPJ**

**Panel Inner
Cladding
PIC**

**Scuff Plate
/ Lining
PSL**

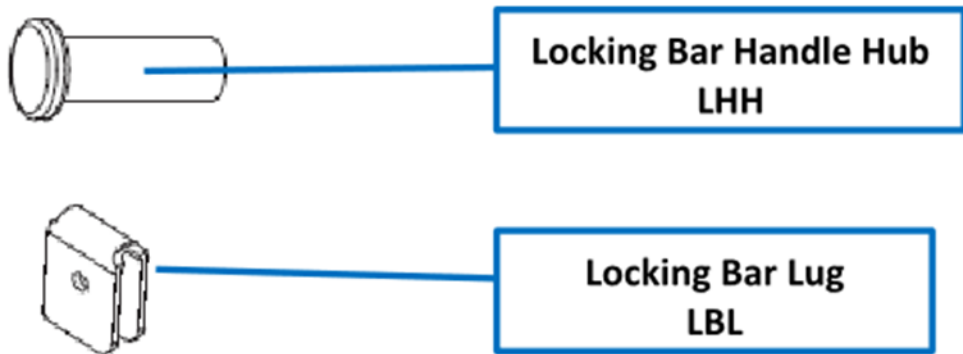
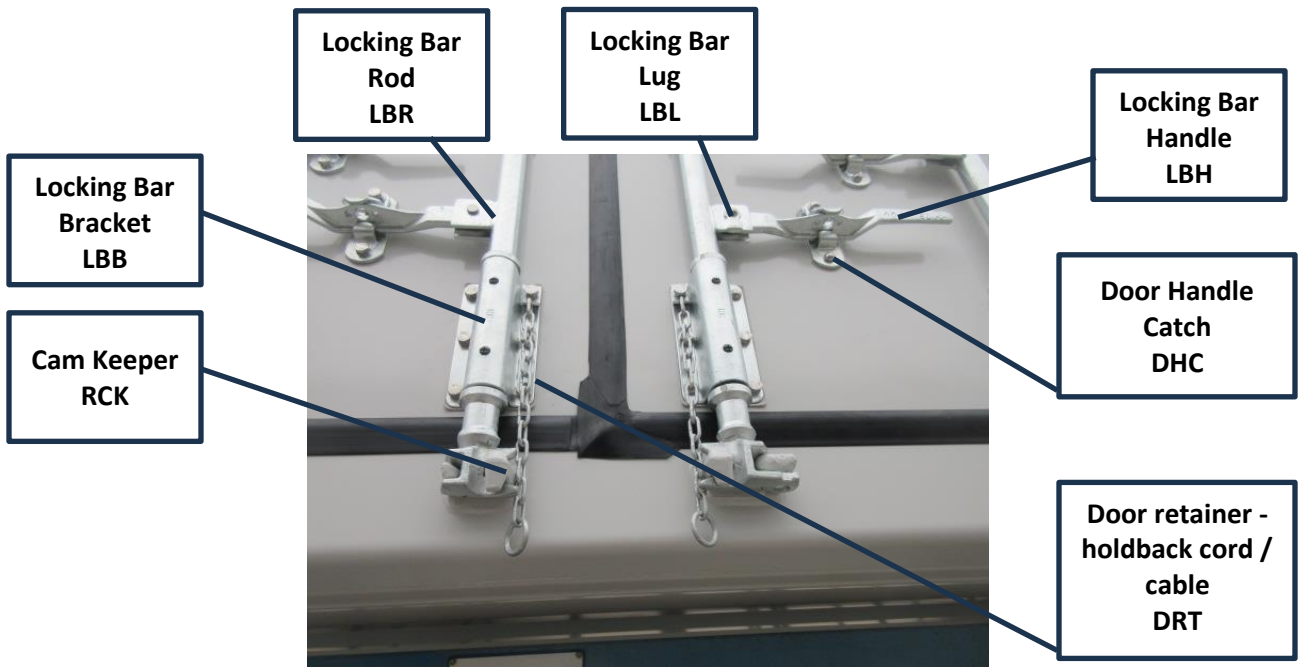
**T-Floor
Assembly
TFA**



**Load Line
Decal
LLD**

**T-floor Strip
TFI**

**Rail Cone
Protector Recess
RCI**



**Outer
Gasket
GTO**

**Locking Bar
Cam**



Locking Bar
Handle
LBH

Locking bar
bracket
LBB

Door Locking
Bar Rod
LBR



Door Chain
Hook
DRH

Door retainer -
holdback cord /
cable
DRT

Outer
Gasket
GTO

Inner
Gasket
GIN



**Rail
Assembly
RLA**

**Panel -
Outer
Cladding
POC**

**Other
Markings
MRU**

**Rail
Assembly
RLA**

**Corner Post
Assembly
CPA**

**High cube
strips
MHC**

**Roof Corner
Gusset
RCG**

**High cube
strips
MHC**



**Serial Number
and Check Digit
MSN**

**Header
Extension Plate
HEP**

**Corner
Fitting
CFG**

**Rail
Assembly
RLA**

MAX GROSS	35,000 KG
	77,160 LBS
TARE	4,650 KG
	10,250 LBS
PAYLOAD	30,350 KG
	66,910 LBS
CU. CAP.	67.6 CUM
	2,387 CU. FT.

Roof Corner Gusset RCG



Clip-on gen-set clamp socket COS

High cube strips MHC

Header Extension Plate

Other markings MRU

Corner Fitting CFG



Clip-on gen-set clamp socket COS

Header Extension Plate HEP

Roof corner gusset RCG

Rail Assembly RLA

Corner Post
Assembly
CPA

Rail
Assembly
RLA

Rail
Assembly
RLA

Corner Post
Assembly
CPA



Rail
Assembly
RLA

Rail
Assembly
RLA

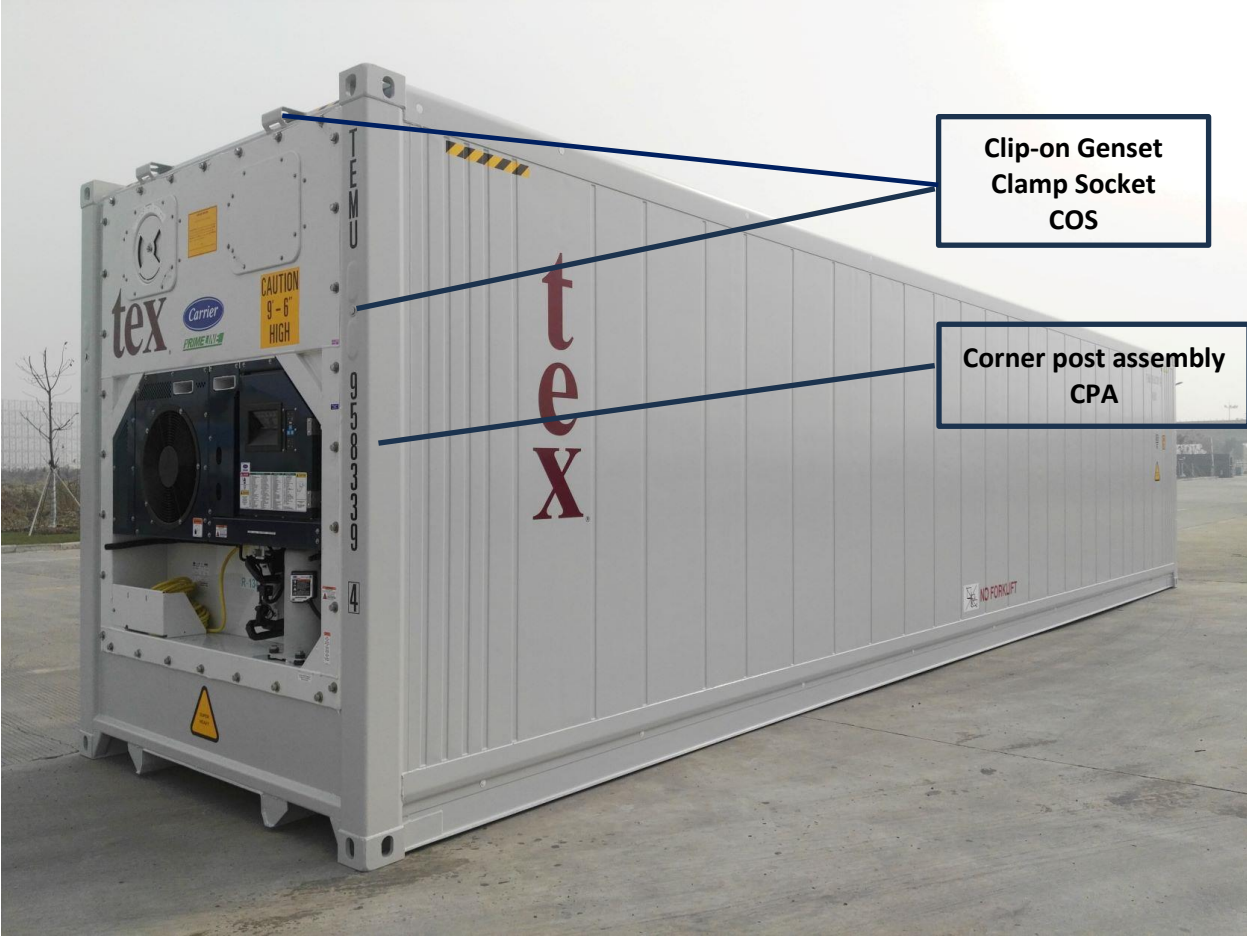
Rail
Assembly
RLA



Rail
Assembly
RLA

Rivet
PRV

Panel
Outer
Cladding
POC



Clip-on Genset
Clamp Socket
COS

Corner post assembly
CPA

**Corner Fitting
CFG**

**High cube strips
MHC**

**Clip-on Genset
Clamp Socket
COS**

**Hardware
HWR**

**Evaporator
Access
Panel
VAP**



**Evaporator
Access Panel
VAP**

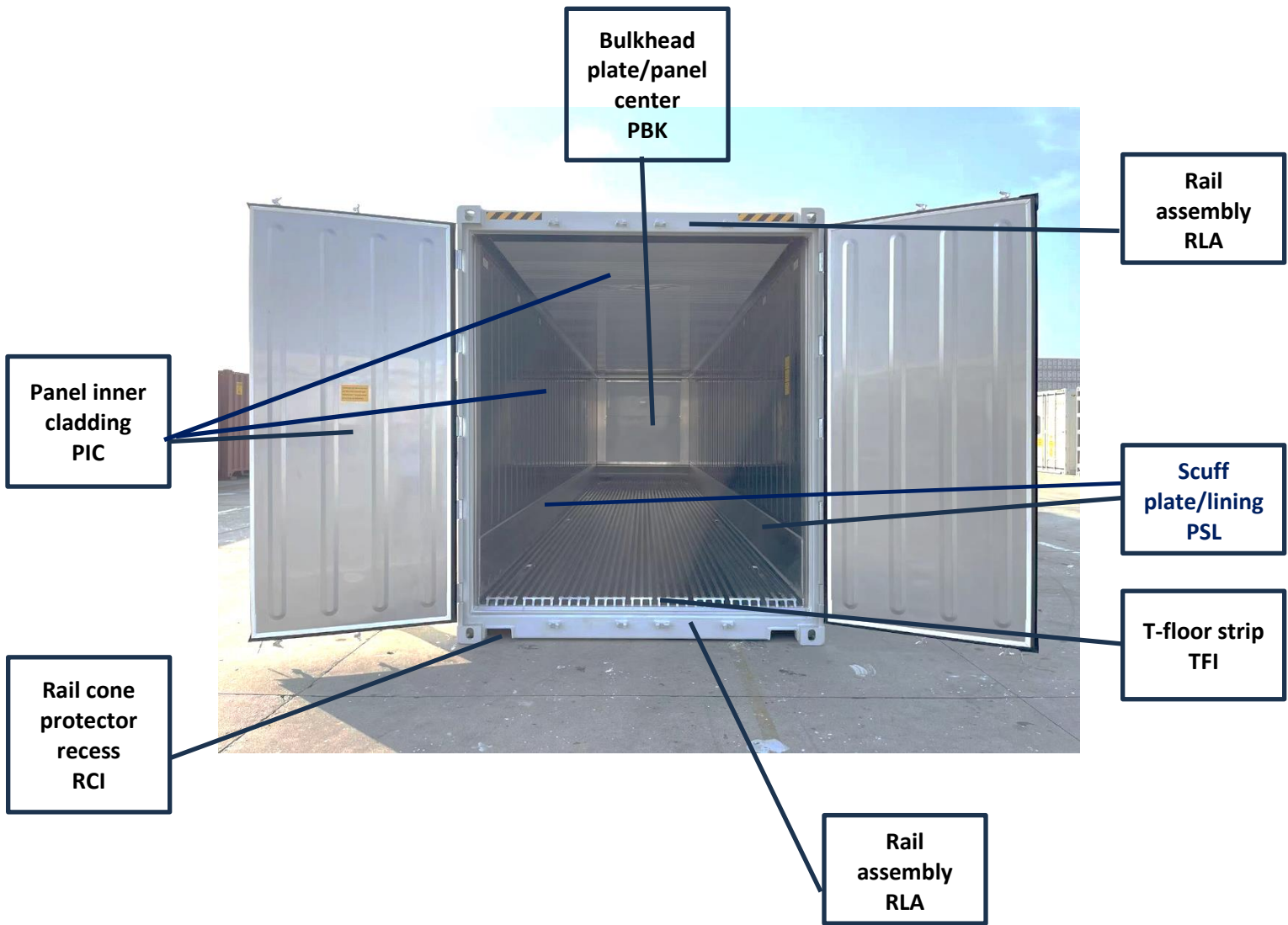
**Air Exchange
Vent
ARE**

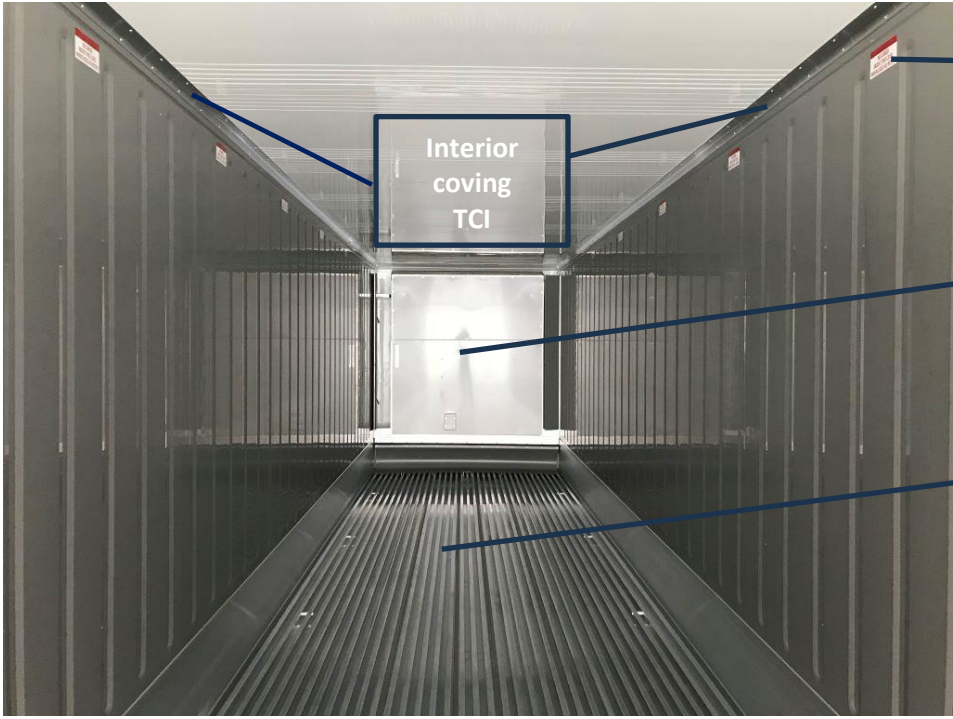
**Electrical
Box
BEA**

**Compressor -
Complete
with Motor
ASY**

**Rail
Assembly
RLA**

**Cable Guard
Small
QPS**



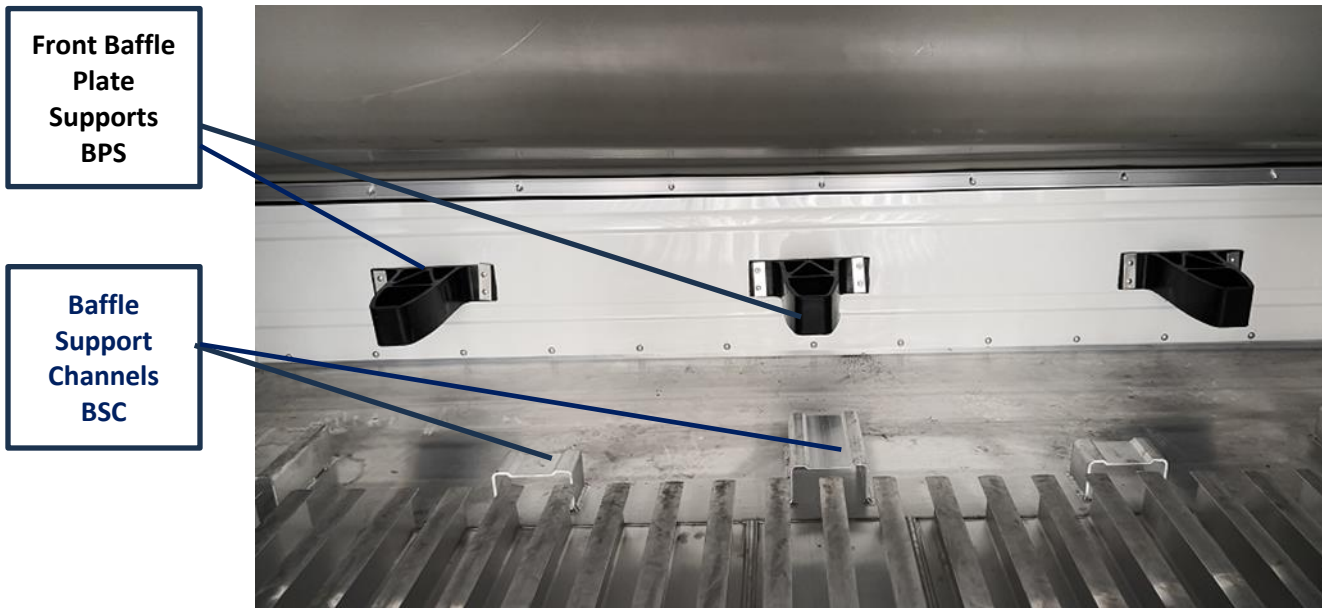
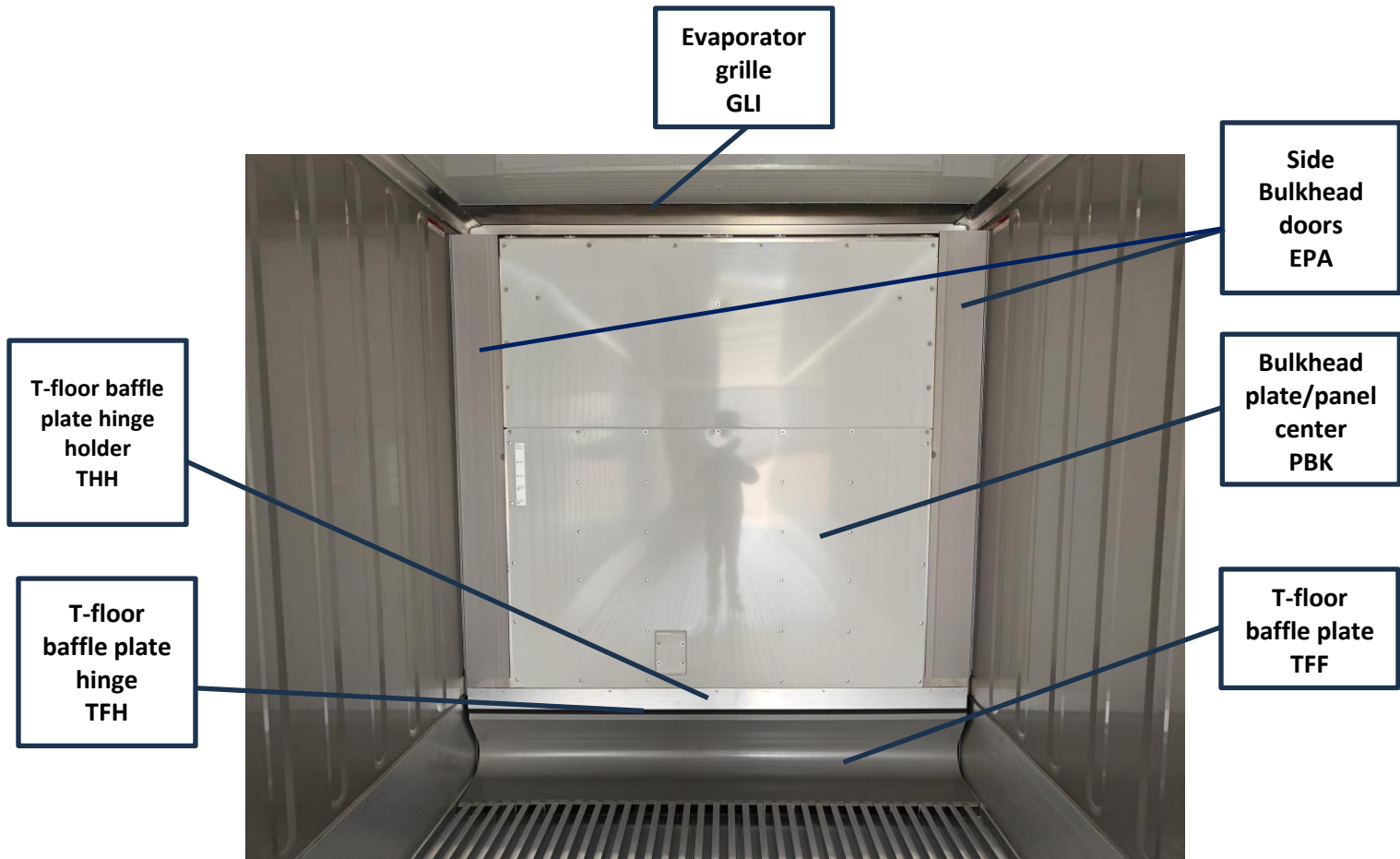


Interior
coving
TCI

Load line de
Load line
decal
LLD

Bulkhead
plate/panel
center
PBK

T-floor
assembly
TFA



**SPRING
KSS**

**Side
Bulkhead
door
EPA**

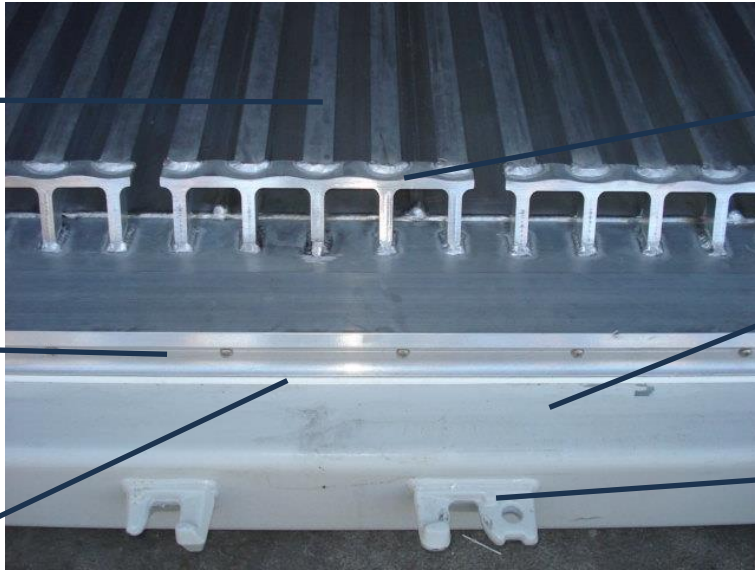
**Bulkhead
inner panel
INP**



**T-floor
assembly
TFA**

**T-floor
casting
TFC**

**T-floor end
seal
TFS**



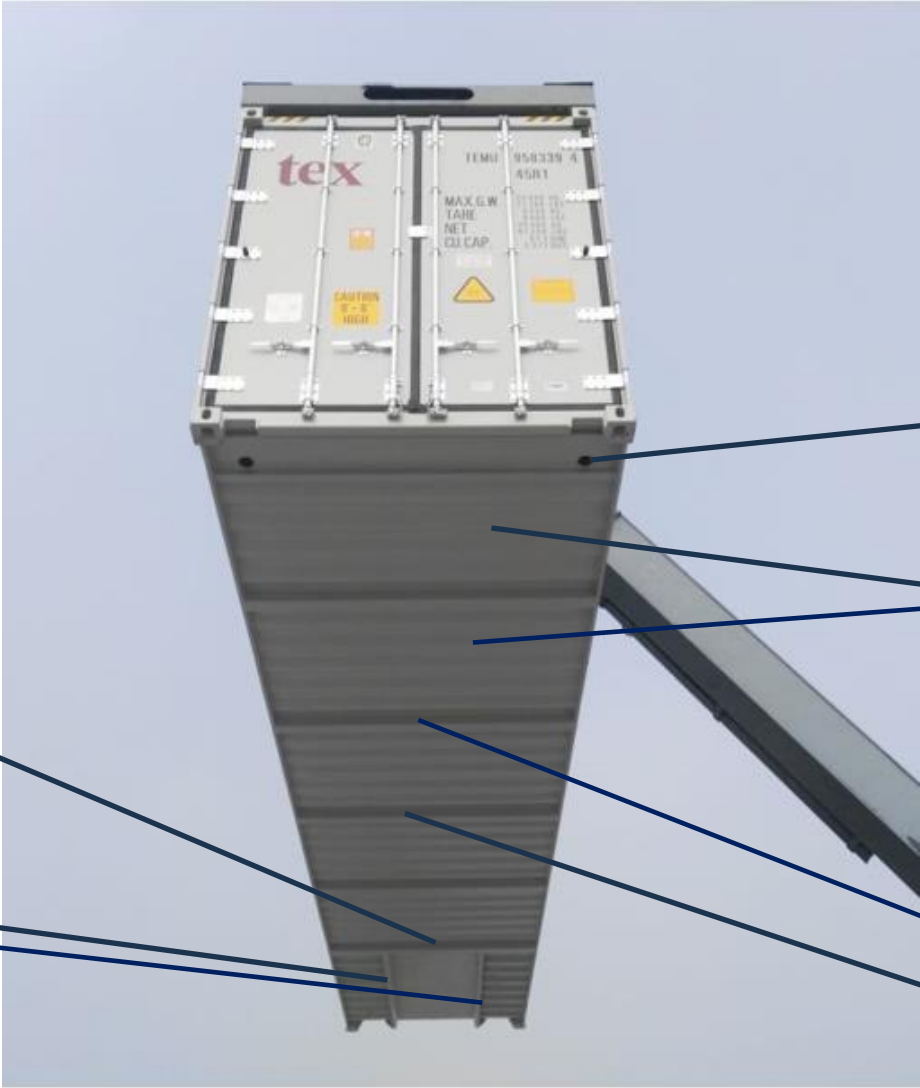
**T-floor strip
TFI**

**Rail
assembly
RLA**

**Cam keeper
RCK**



**Panel edge
profile
PEP**



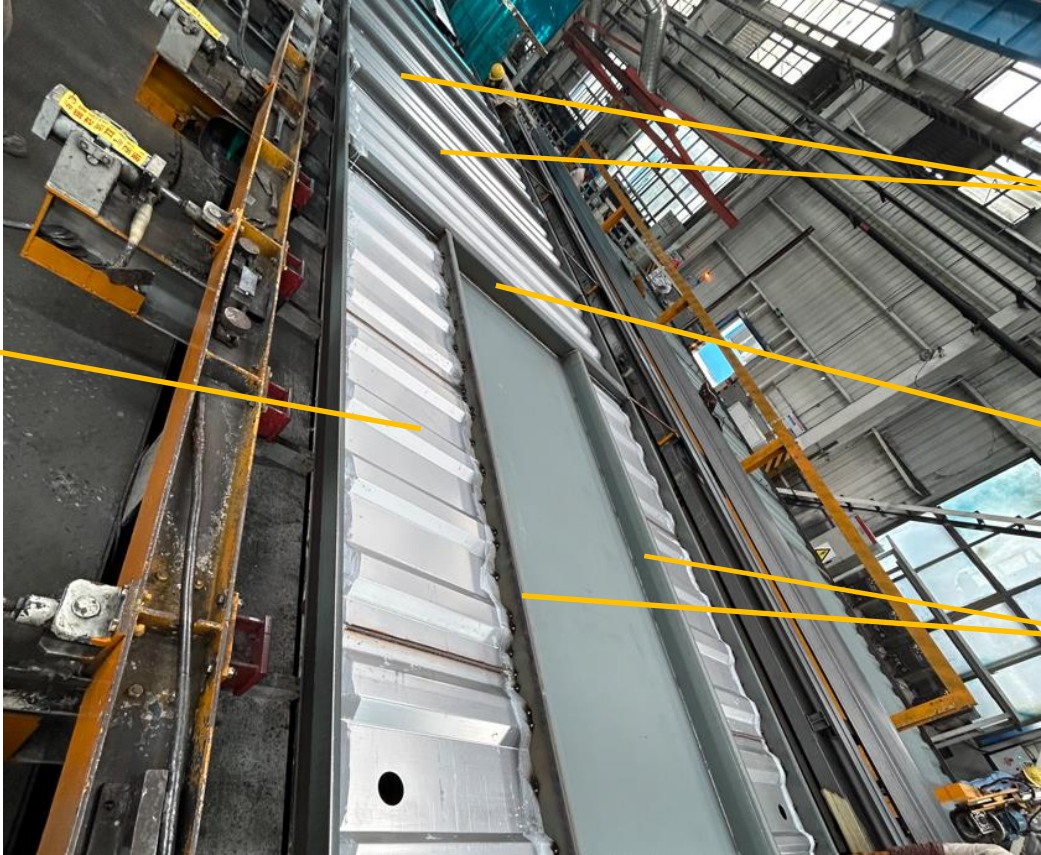
**Tunnel
Bolster
TUB**

**Gooseneck
Tunnel Rail
RTL**

**Self -opening
Drain
DKK**

**Subfloor
PAA**

**Cross-
member
assembly
CMA**



Subfloor
PAA

Crossmember
CMA

Tunnel
Bolster
TUB

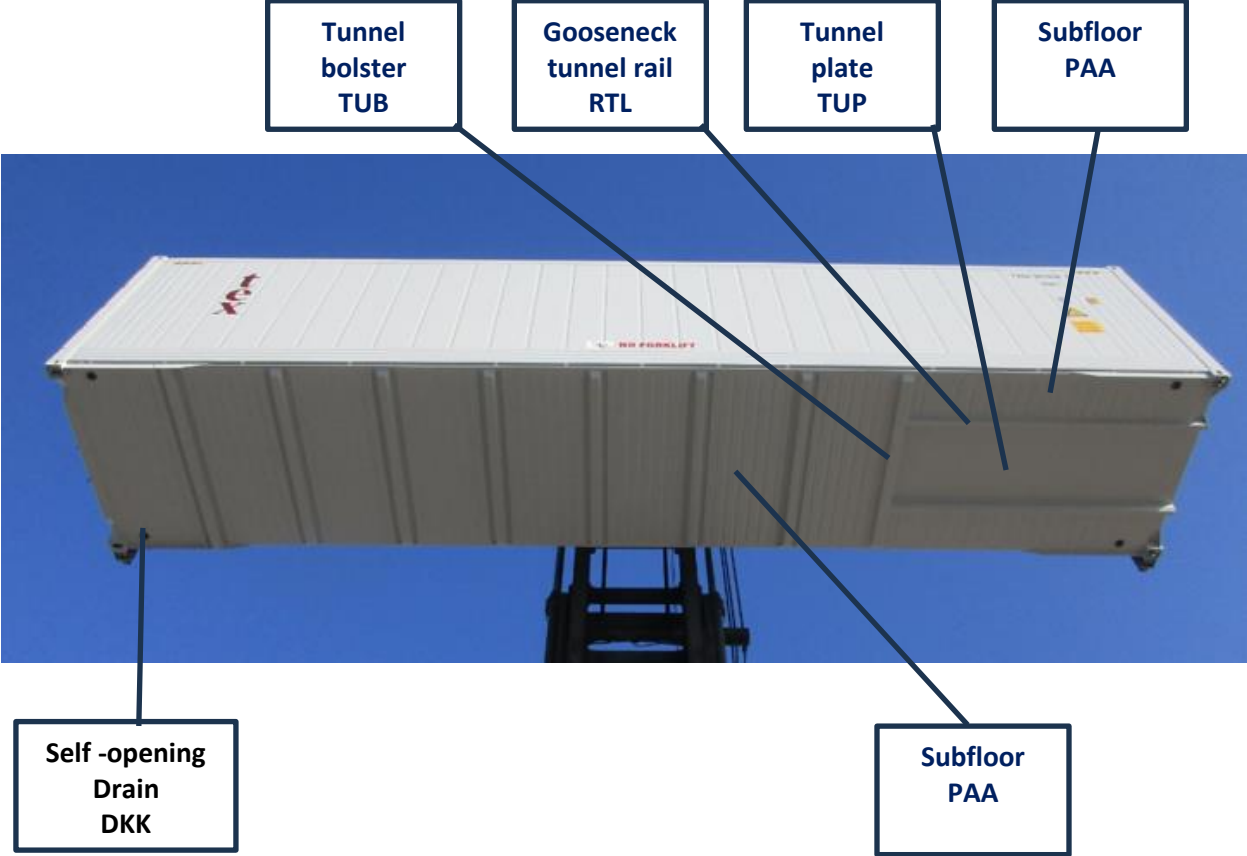
Gooseneck
Tunnel Rail
RTL

Subfloor
PAA

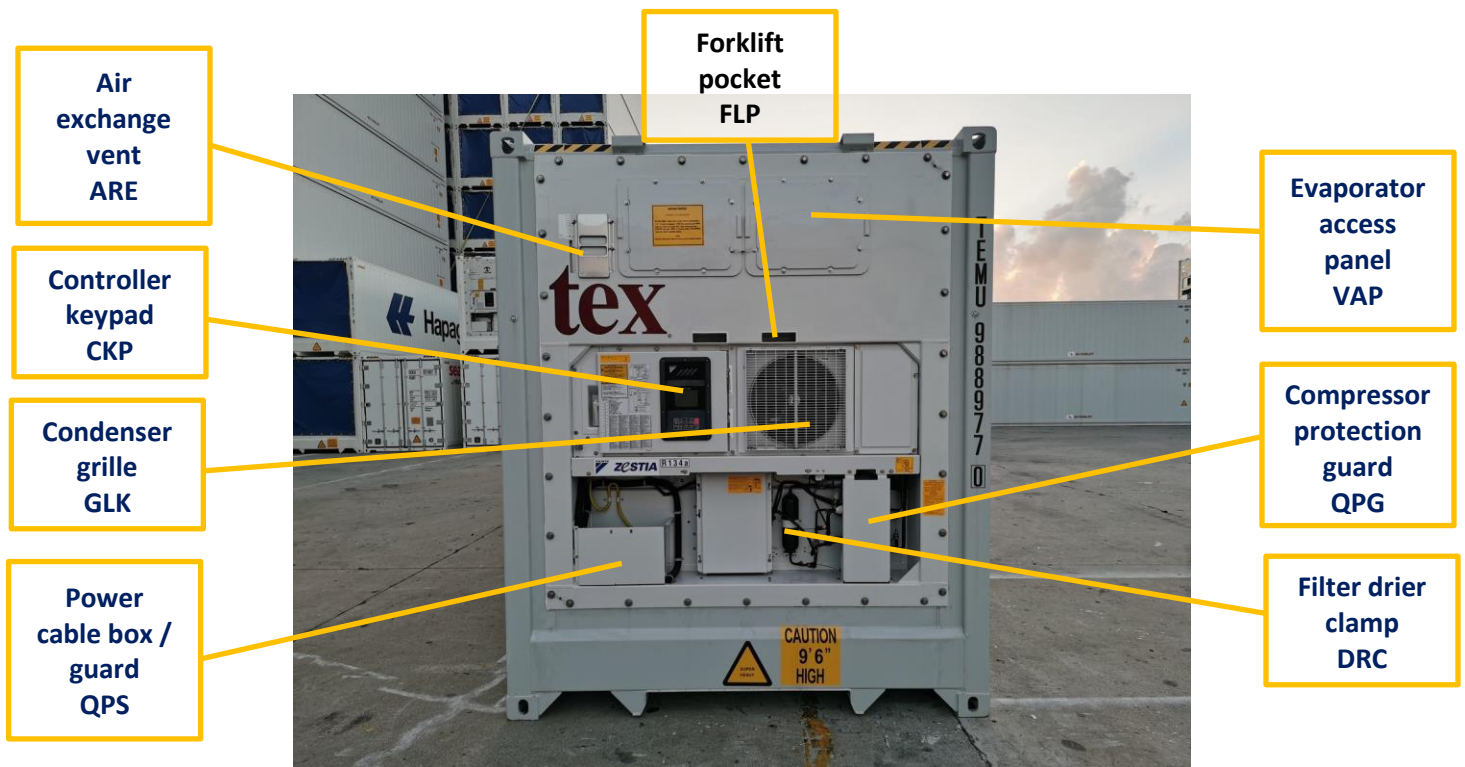
Gooseneck
tunnel rail
RTL

Tunnel
plate
TUP





NOTE: Considering the large number of machinery components, diversity of manufacturers and models, this document will focus on the more common components among all machine manufacturers for your immediate assistance. The IICL strongly suggests that you refer to the manufacturers' manuals for proper guidance on component names, component locations, and part serial numbers.





Air exchange vent ARE

Markings MRK

Evaporator access panel VAP

Condenser grille GLK

Controller keypad CKP

Markings MRK

Decals control box MCN

Power cable box / guard QPS

Compressor terminal box TMB

Rail assembly RLA

Compressor complete ASY



Condenser grille
GLK

Air exchange vent
ARE

Cable 460 V
ECB

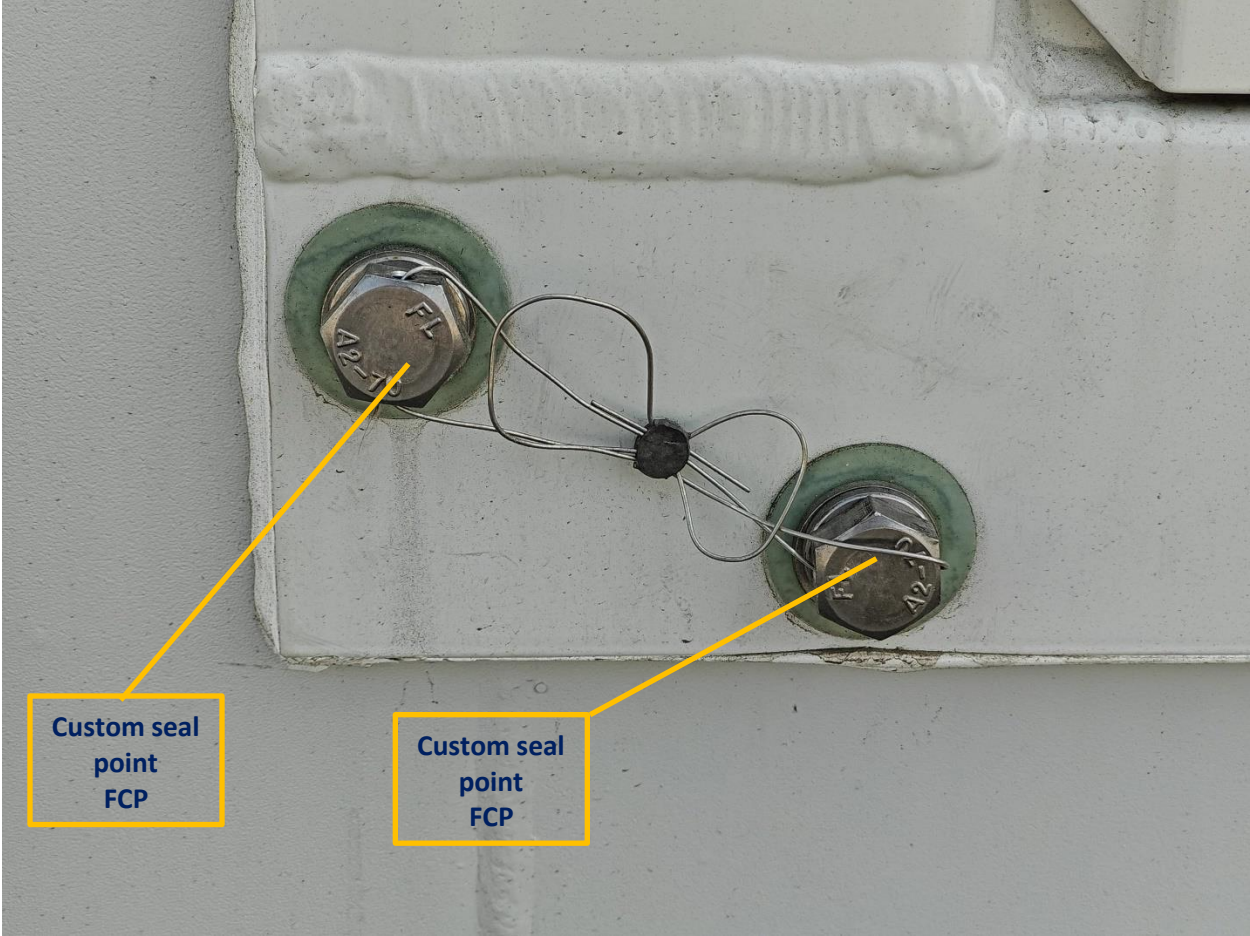
Power cable box /
guard
QPS

Compressor
complete
ASY

Evaporator
access
panel
VAP

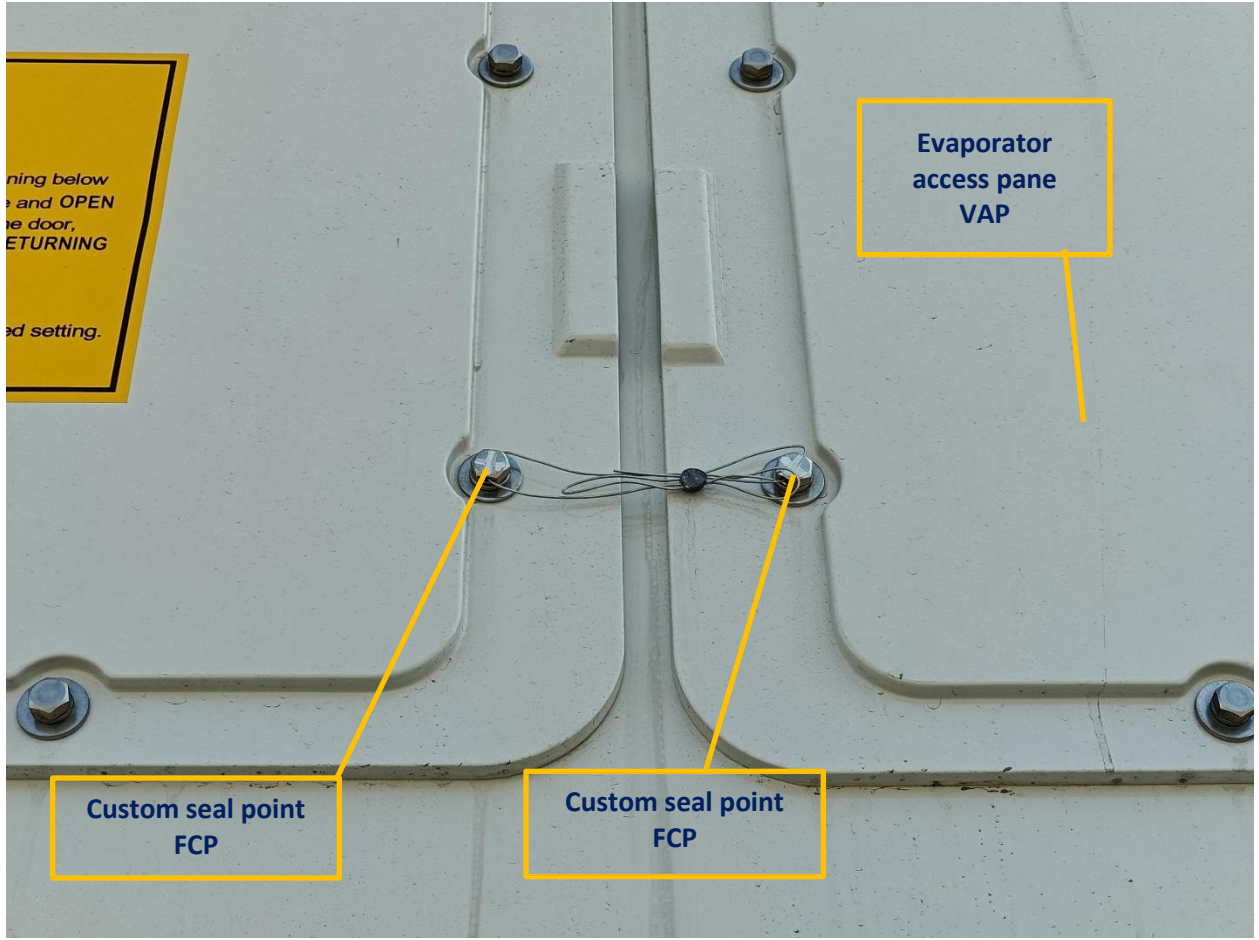
Clip-on gen-
set clamp
socket
COS

Controller
keypad
CKP



Custom seal
point
FCP

Custom seal
point
FCP



ning below
and OPEN
e door,
ETURNING
ed setting.

Evaporator
access pane
VAP

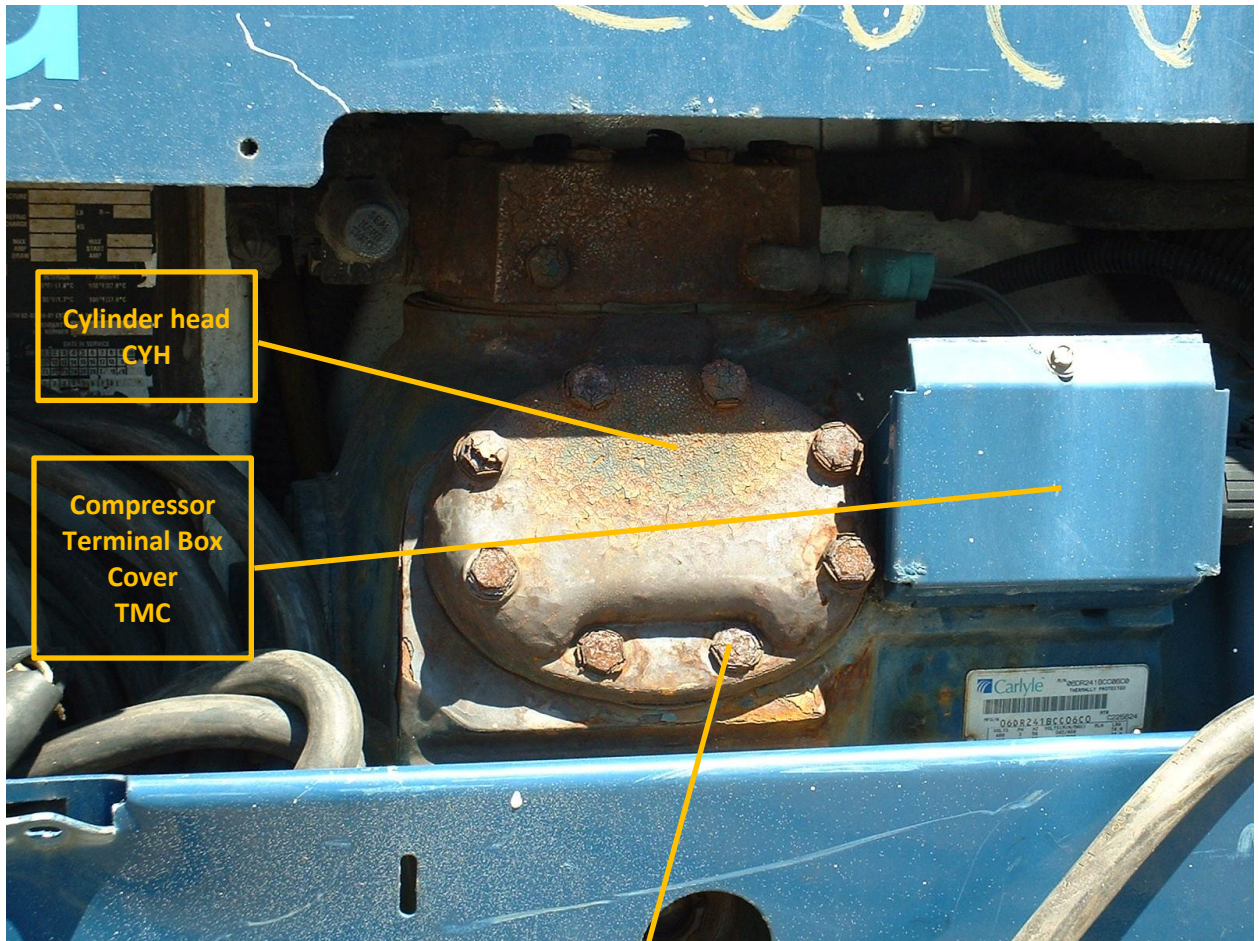
Custom seal point
FCP

Custom seal point
FCP



Clip-on gen-set clamp socket COS

Clip-on gen-set clamp socket COS



Cylinder head
CYH

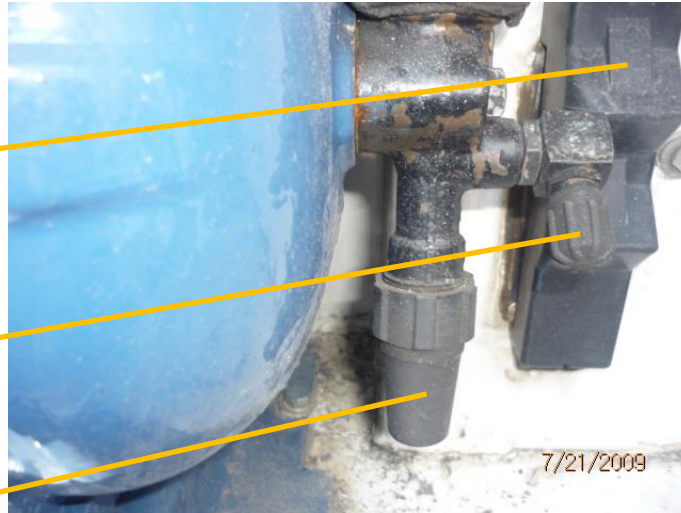
Compressor
Terminal Box
Cover
TMC

Hardware
HWR

**Probe Cover
Refer to
Manuf.
Manual**

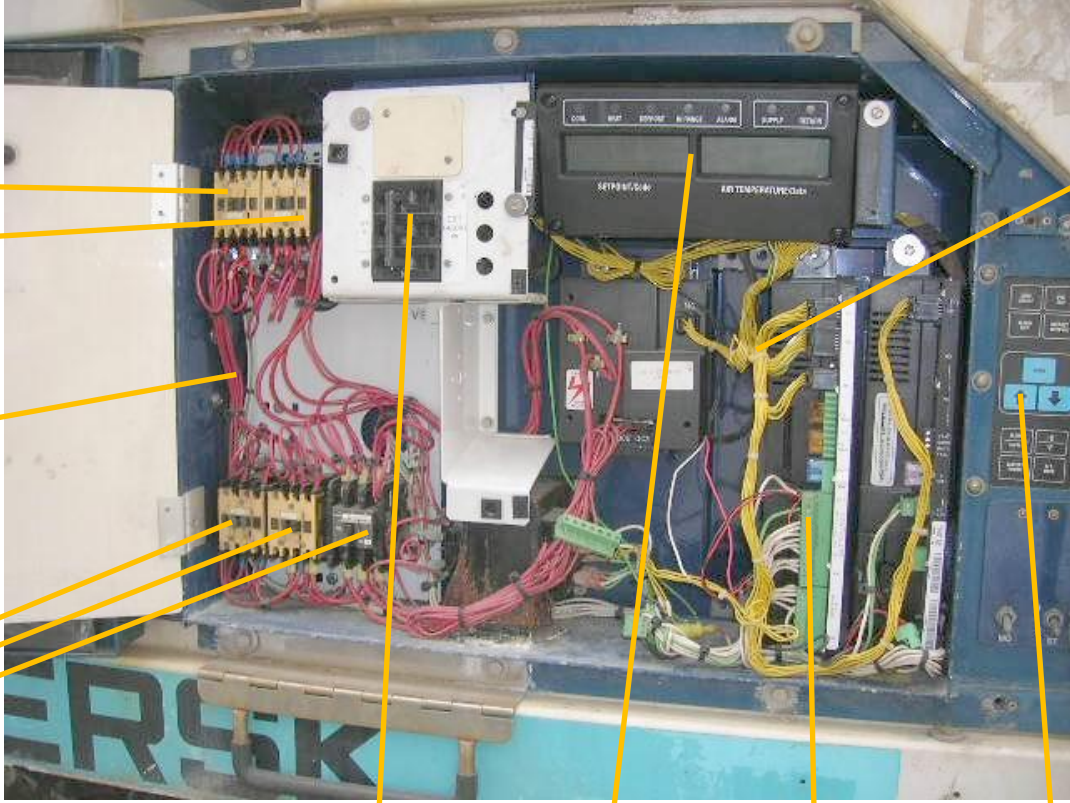
**DSV
connector cap
VCC**

**Valve stem
cap
KVC**



**Suction
Modulating
Valve
VMA**





Contactors
Refer to
Manuf.
manual

Wiring
WIR

Contactors
Refer to
Manuf.
manual

Wiring
WIR

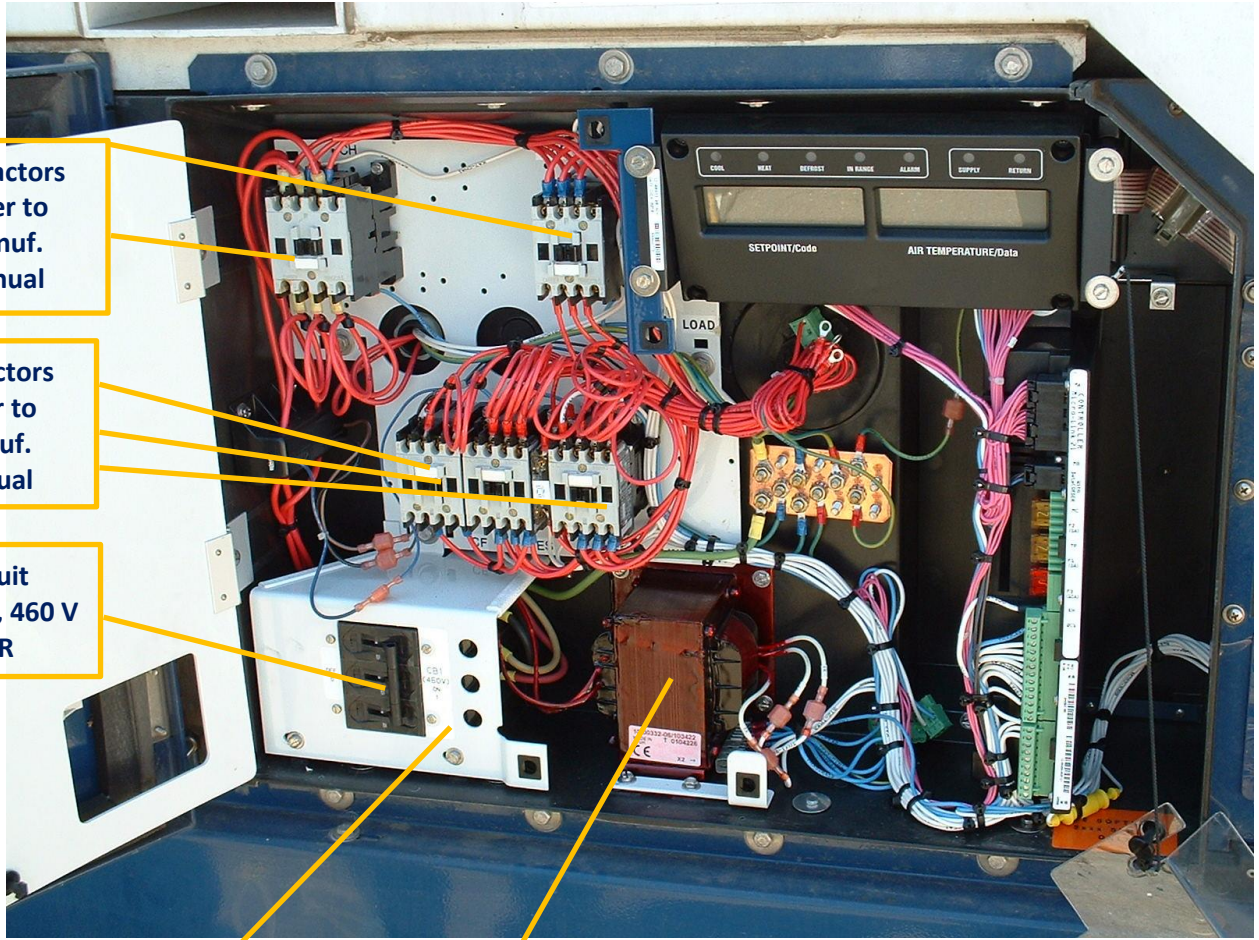
Circuit
breaker 460 V
CBR

Display
assembly
BDA

Mother
electronic
board
BMN

Controller
keypad
CKP





**Contactors
Refer to
Manuf.
manual**

**Contactors
Refer to
Manuf.
manual**

**Circuit
breaker, 460 V
CBR**

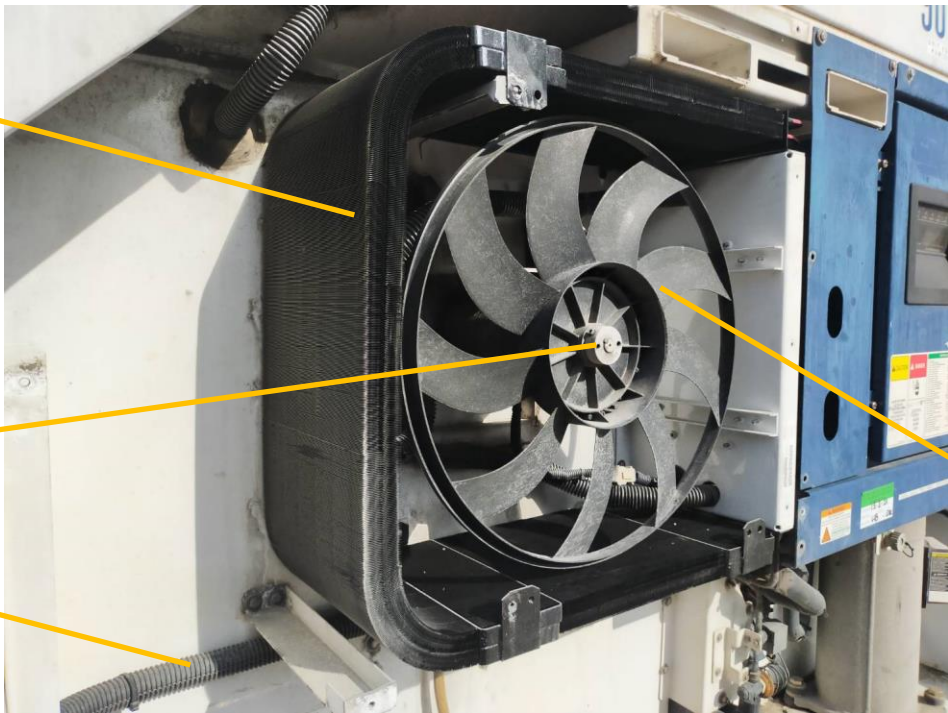
**Circuit breaker
bracket/mount
CBM**

**Current
Transformer
CTF**

**Coil assembly
condenser
CSK**

**Motor -
condenser fan
motor
MKS**

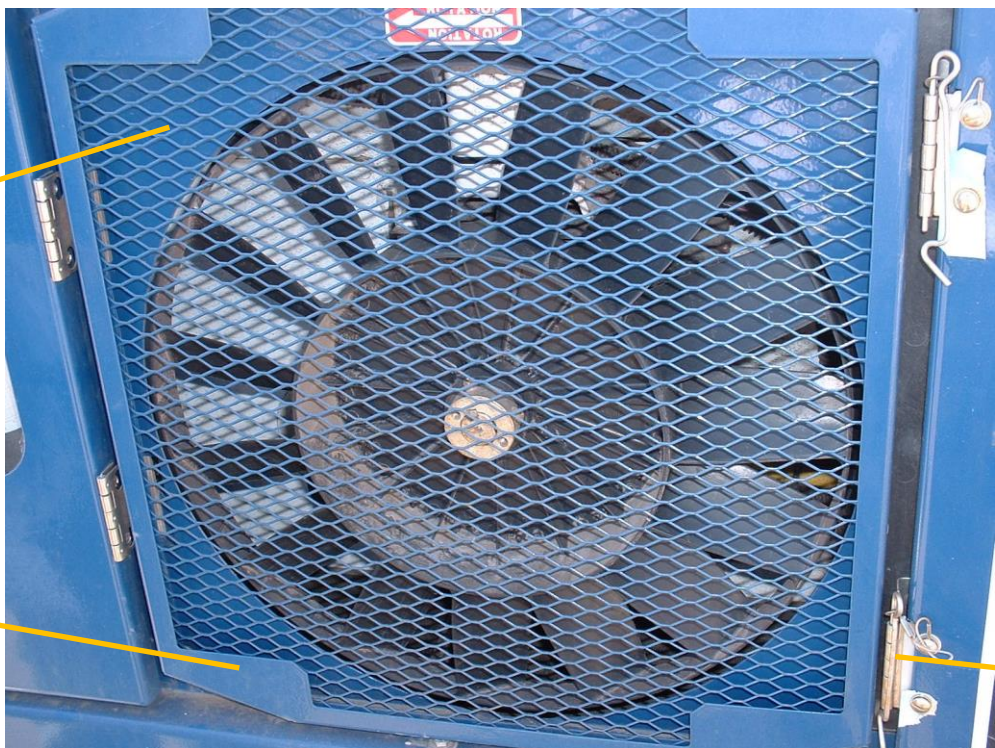
**Drain tube
DRN**



**Fan-
condenser
motor
FKN**

**Condenser
grille
GLK**

**Condenser
door panel
CDP**



**Condenser
door hinge
CRH**

Fan -
condenser
motor
FKN



Condenser
coil mounting
bracket
CCB

Coil assembly
- condenser
CSK

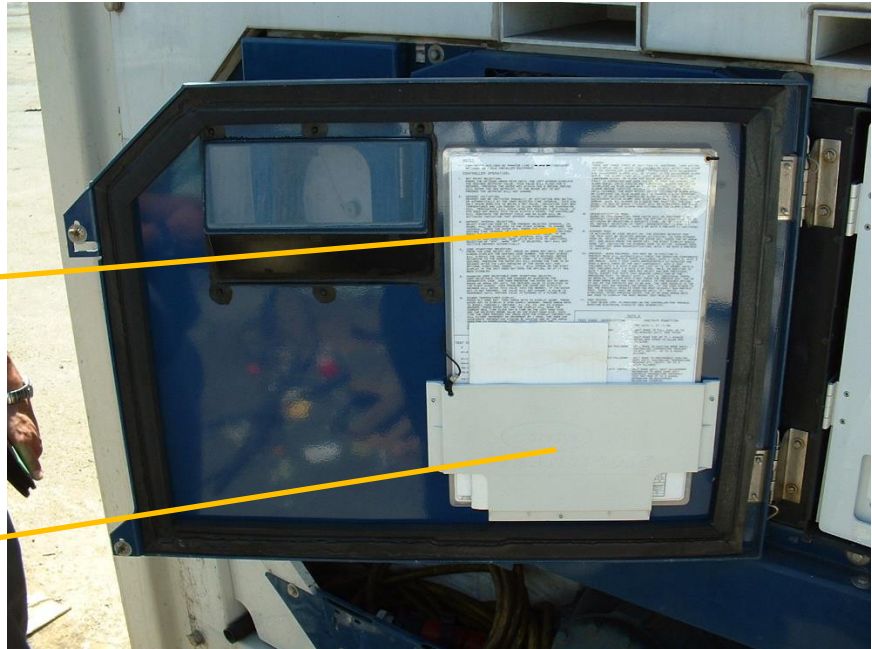


Coil assembly
- condenser
CSK

Drain tube
DRN

**Electrical diagram
EDX**

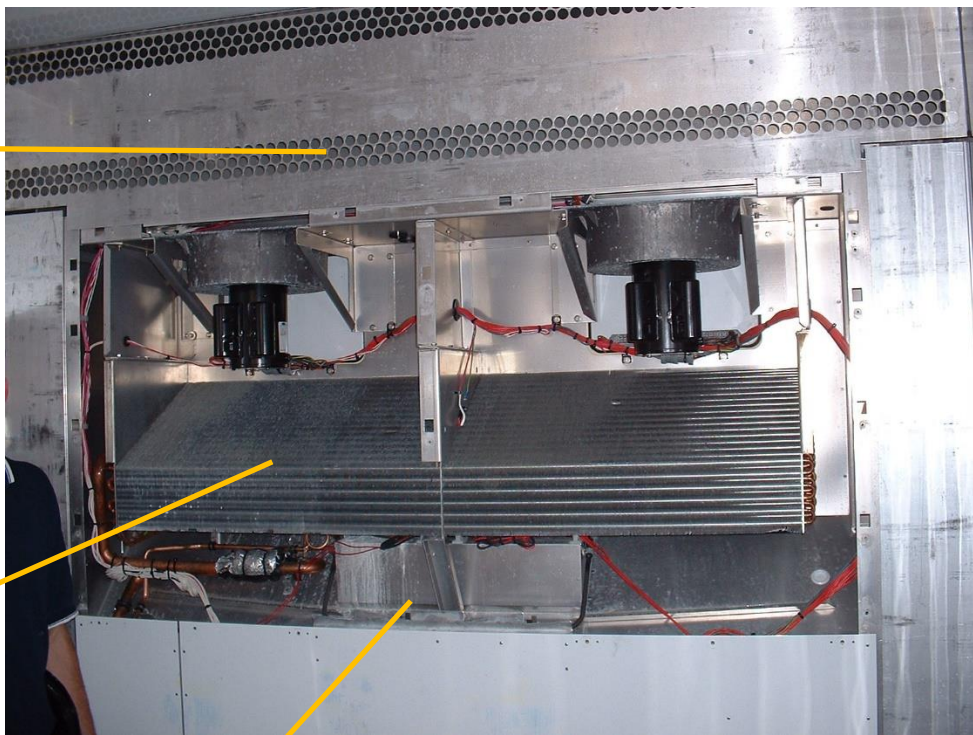
**Electrical diagram
holder
EDH**

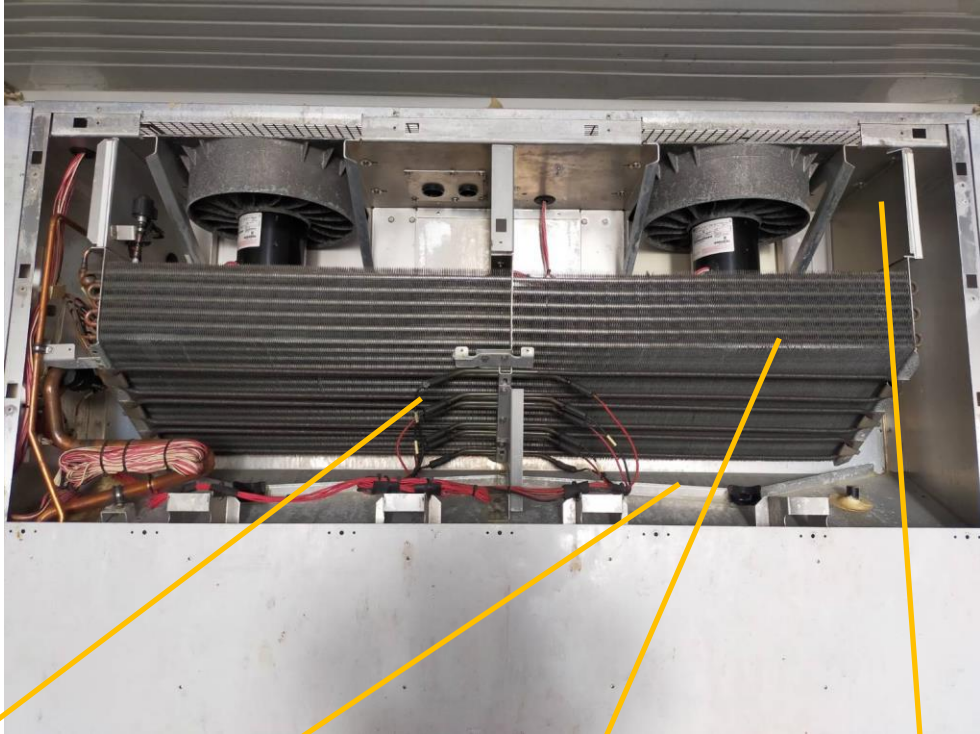


**Evaporator
grill
EGT**

**Coil fins –
evaporator
CFV**

**Drain pan
DPA**



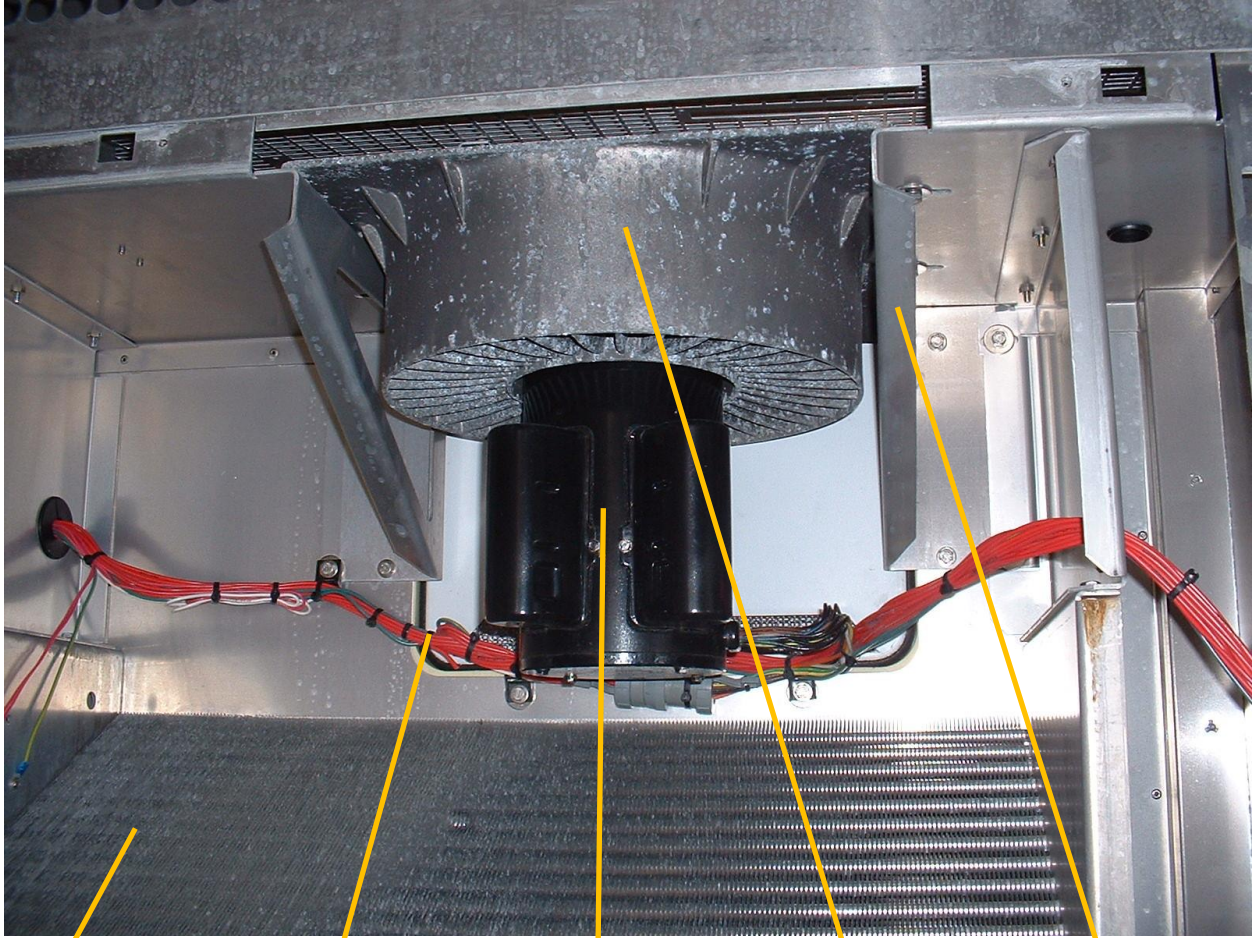


Evaporator
coil heaters
HVC

Drain pan
DPA

Coil assembly
– evaporator
CSV

Evap. motor
mount
EMM



**Coil assembly
– evaporator
CSV**

**Evaporator
motor – elecc.
Connections
MVE**

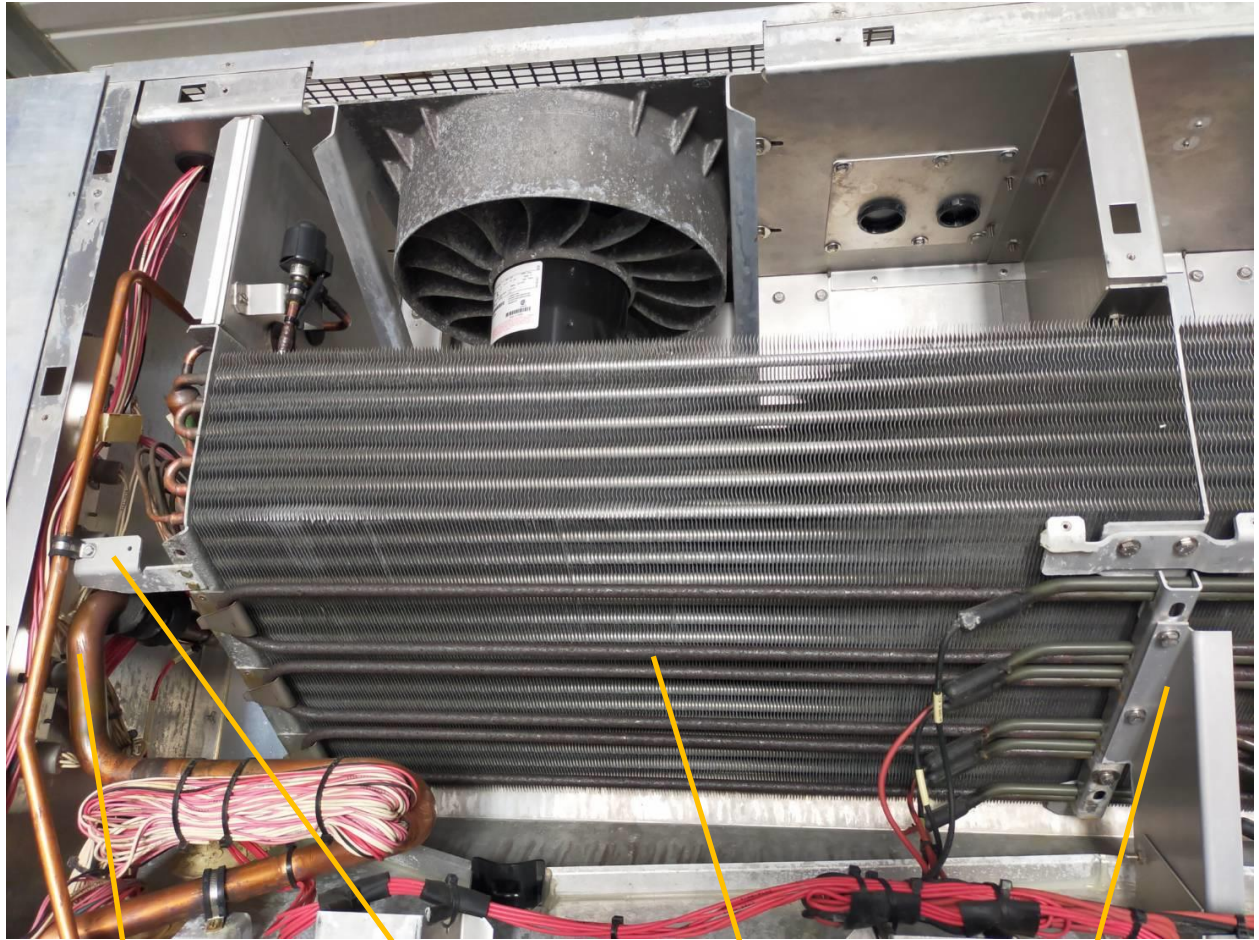
**Motor -
evaporator
fan motor
MVS**

**Evap. fan
housing
(right and
left housing)
VFH**

**Evap. motor
mount
EMM**



Evaporation coil defrost
temperature sensor
EVS



**Piping, other
PMI**

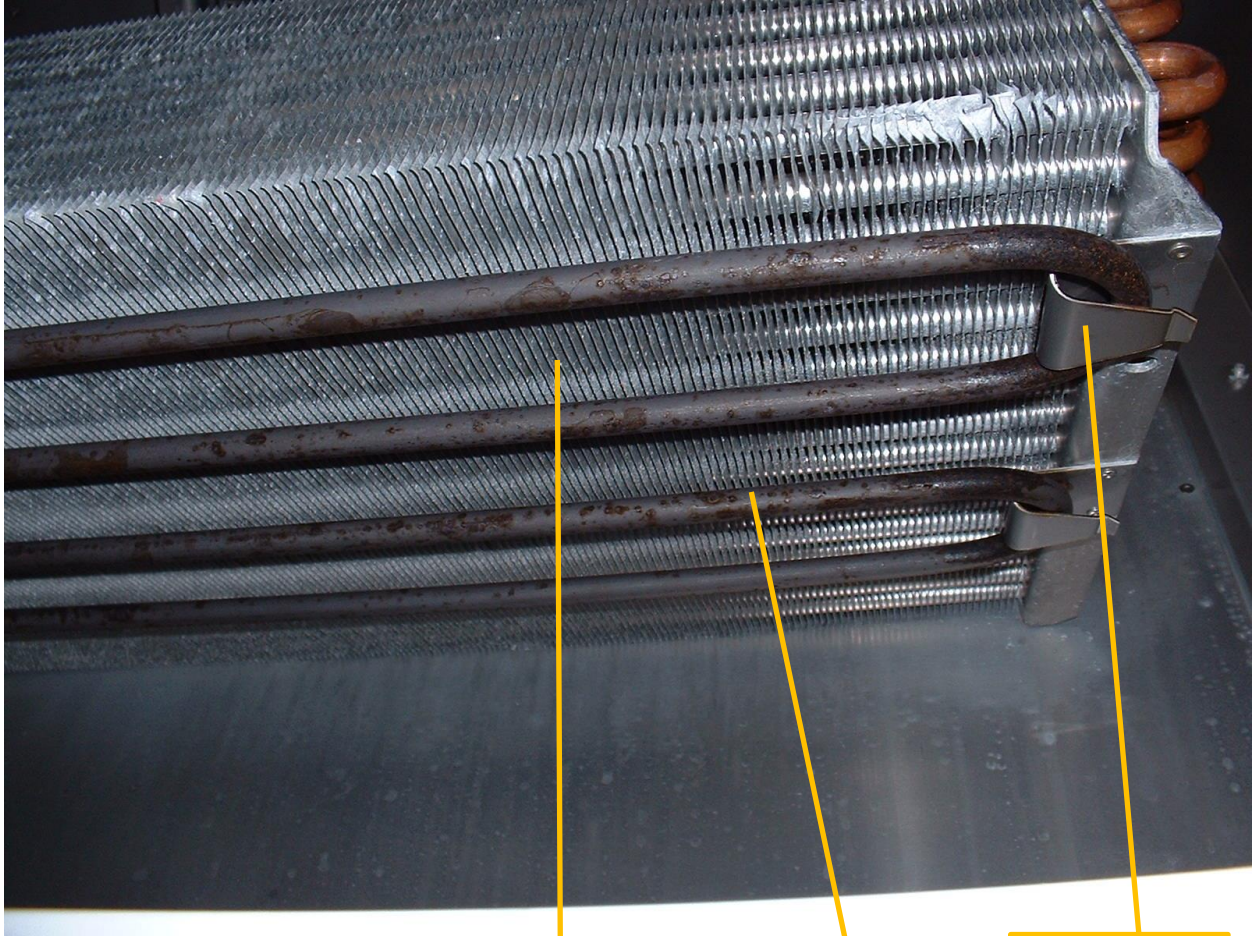
**Support
bracket, pipe
system
TSB**

**Evaporator
coil heaters
HVC**

**Evap. fan
motor –
bracket
VFC**



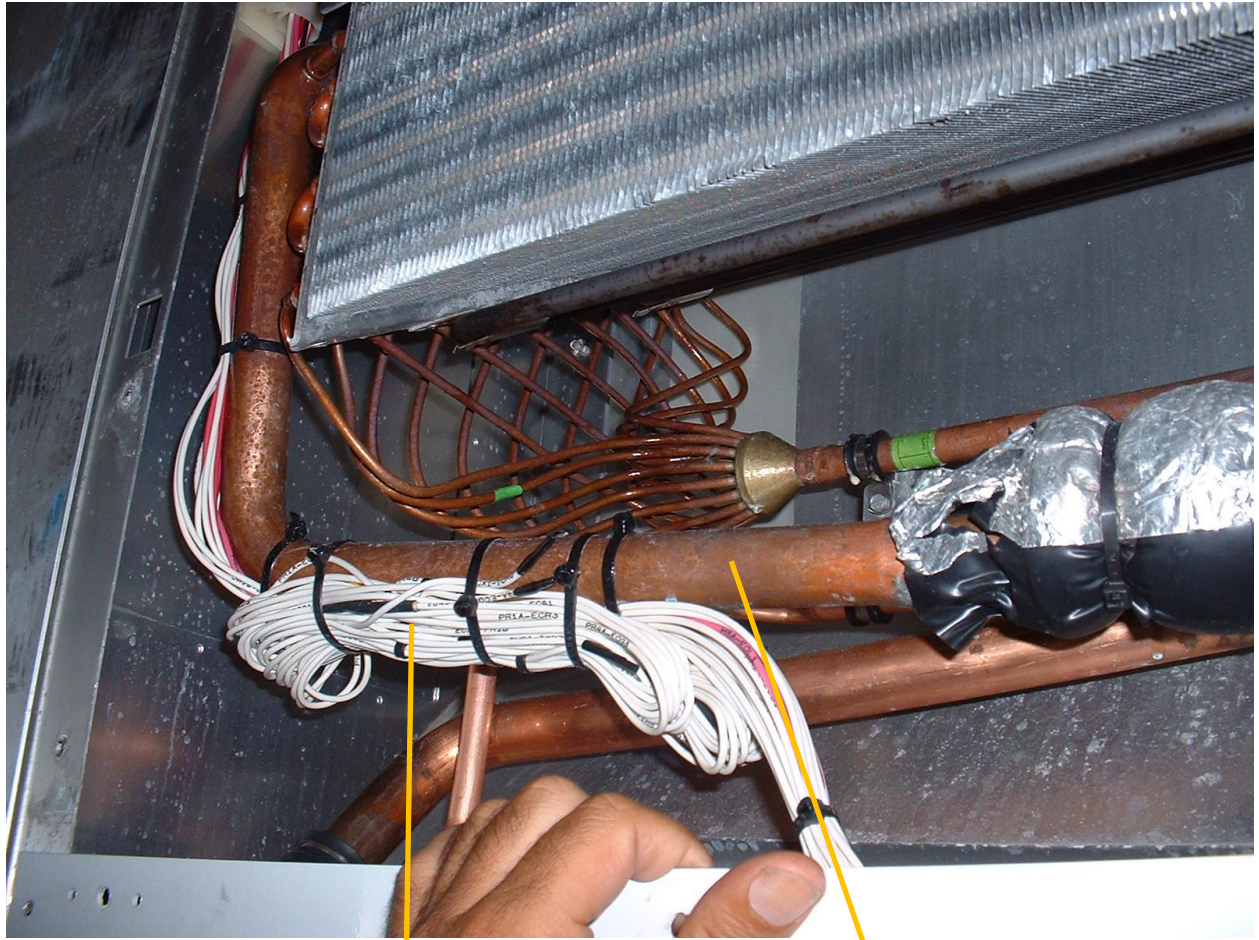
**Drain pan
DPA**



**Coil fins –
evaporator
CFV**

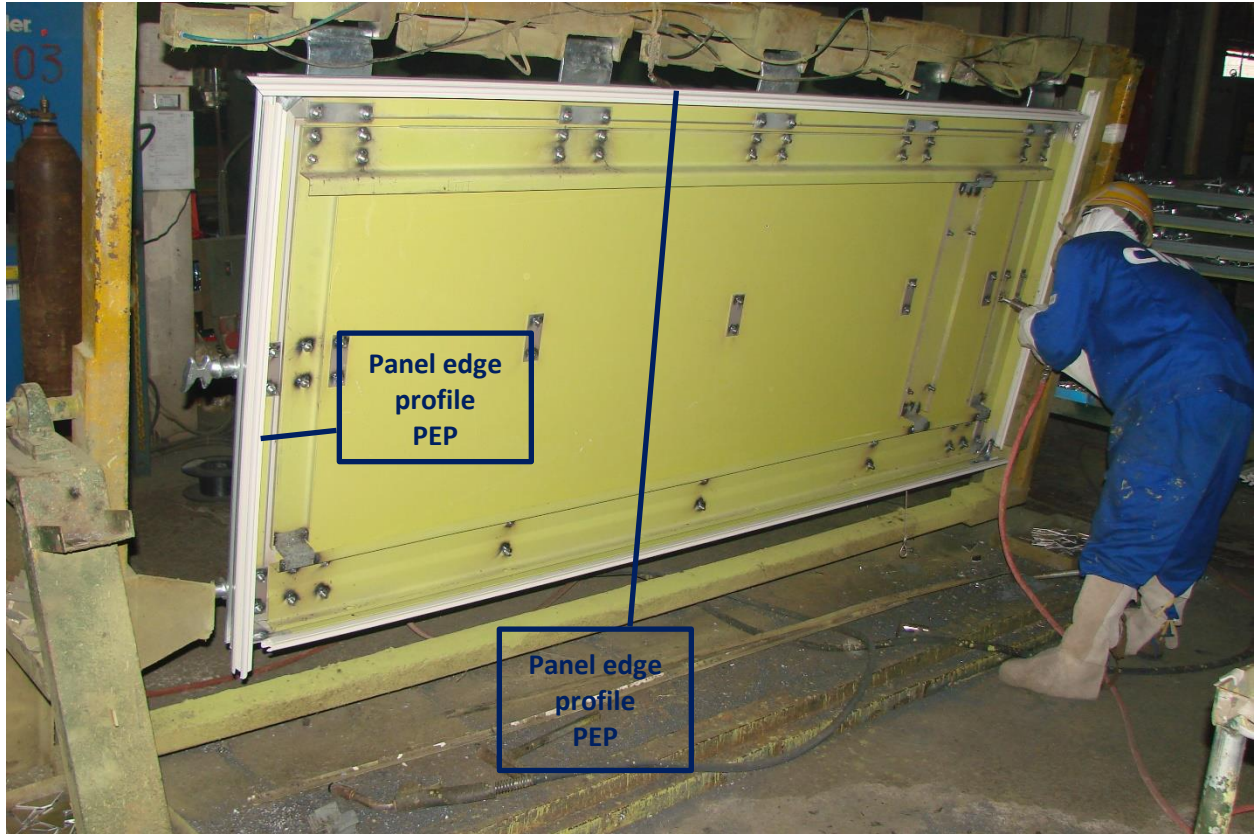
**Evaporator
coil heaters
HVC**

**Heater
holding back
strip
HHS**

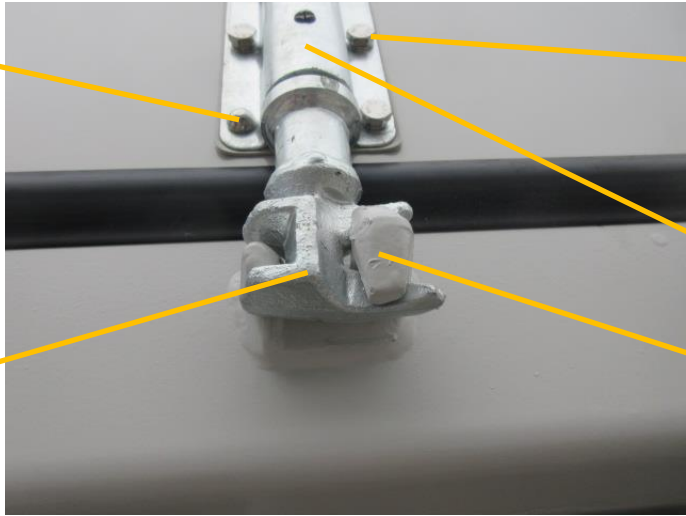


**Wiring
WIR**

**Piping
PMI**



**Hardware
huck bolts
HWH**



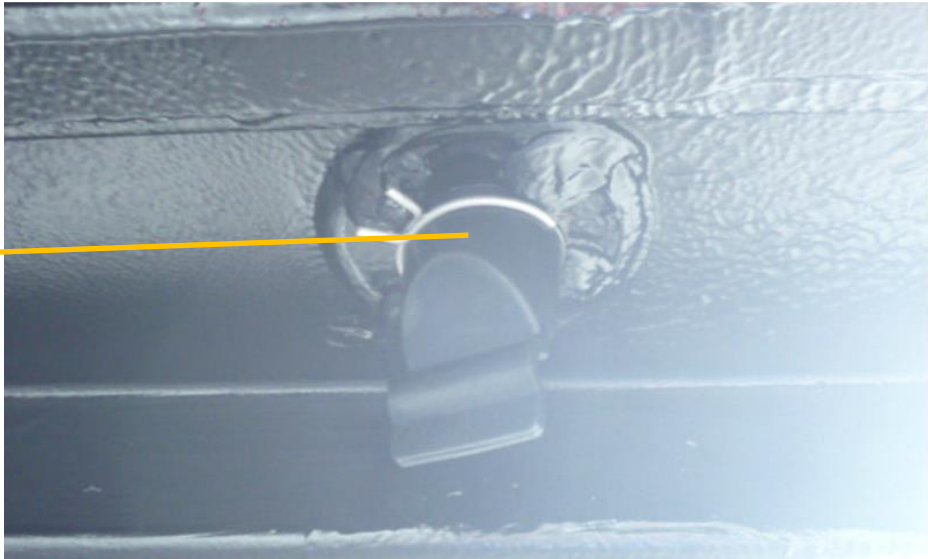
**Hardware
HWR**

**Locking bar
bracket
LBB**

**Locking bar
cam
LBC**

**Cam keeper
RCK**

**Self-
opening
drain
DKK**





**Markings
MRK**

**Electrical
diagram
EDX**

**Controller
box door
BCD**