



EQUIPMENT CODE STANDARD “ECS”.

Rolltrailers – Component codes, reference guide.

February 28, 2025.

IIICLL workgroup:

**CAI
SEACO**

**Marc De Jongh
Marco Kramer
Peter Sheppard**

**IIICLL:
Luiz Gonçalves
technical@iicl.org**

Rolltrailer Components



Track Guide
TRG

Front Beam
RLA

Front Unit
Number Decal
MRU

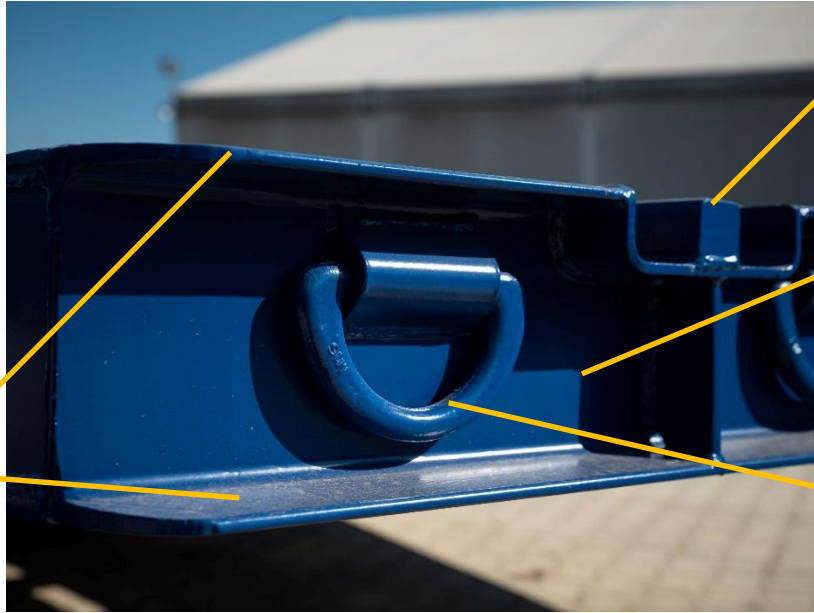
Front Weight
Decals
MRU



Floor Planks
FPB

Number Decal
/ Markings
MRU

Left Hand Side
Beam
RLA



Track Guide
TRG

Rear Beam
RLA

Rear Lashing 'D' Ring
LSR

Rear Beam Flange
RLA



Front Beam
RLA

Gooseneck Safety Coupling
GSC

Right Side Stanchion Pocket
SST

Twist Lock Housing
TWH

Corner Protection Post
CPA

**Stacking
Recess Plate
FSP**



**Stacking
Recess Plate
FSP**

**Right Side
Stanchion
Pocket
SST**

**Right Side
Lashing 'D'
Ring
LSR**



**Right Side
Beam
RLA**

Track Guide
TRG

'D' Ring Bracket
LST

Gooseneck Safety Eyelet
KGE



Gooseneck Safety Coupling
GSC

Gooseneck Safety Eyelet
KGE

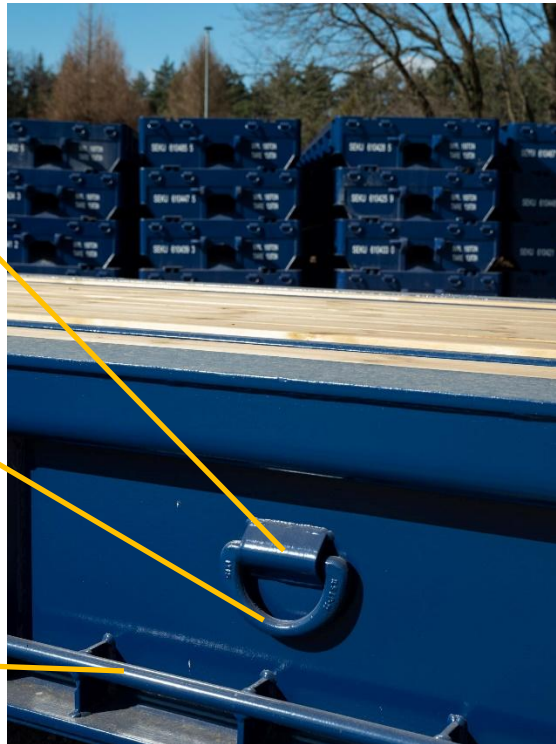


Track Guide
TRG

**'D' Ring
Bracket**
LST

**Lashing 'D'
Ring**
LSR

Lashing Bar
LSB

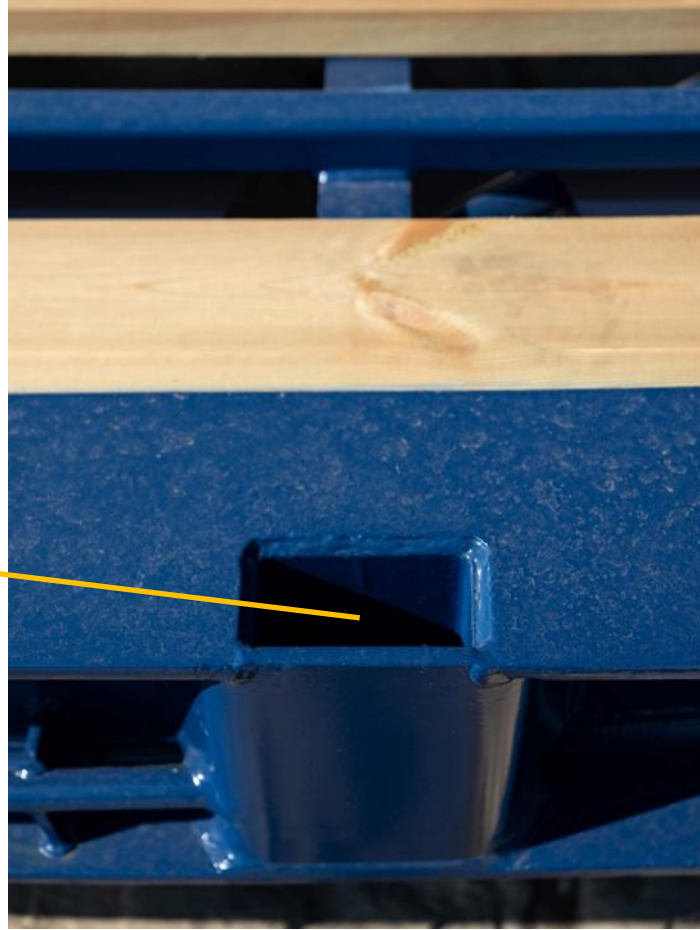


Lashing Bar
LSB



**Gooseneck
Tunnel**
RTL





**Stanchion
Pocket
SST**



**Steel Checker
Plate
FKP**



**Forklift Pocket
FLA**



**Rear Beam
RLA**



**Right Hand
Beam
RLA**

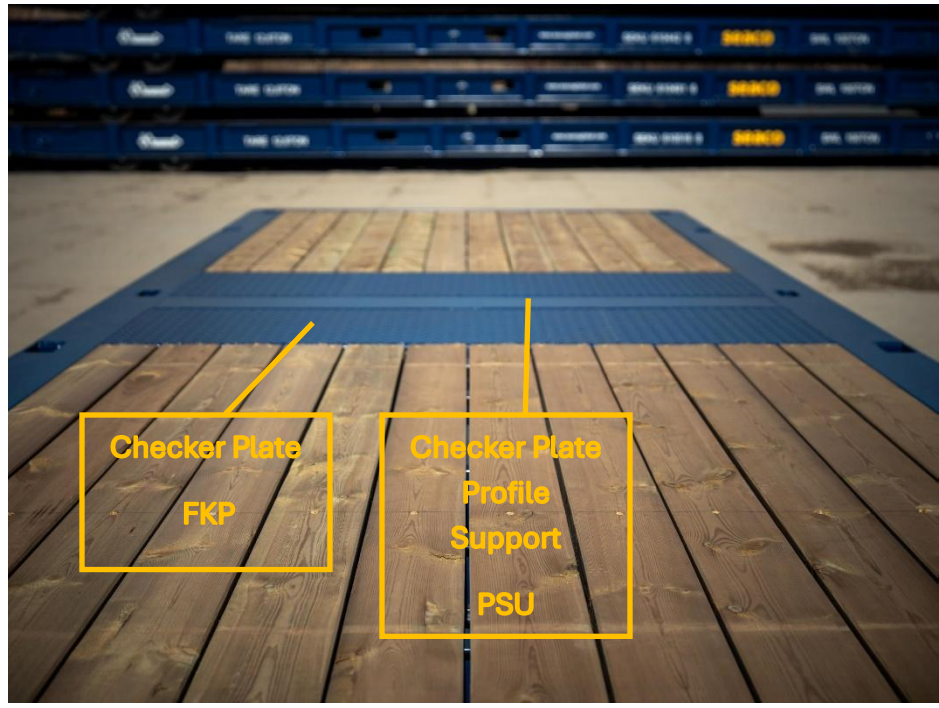
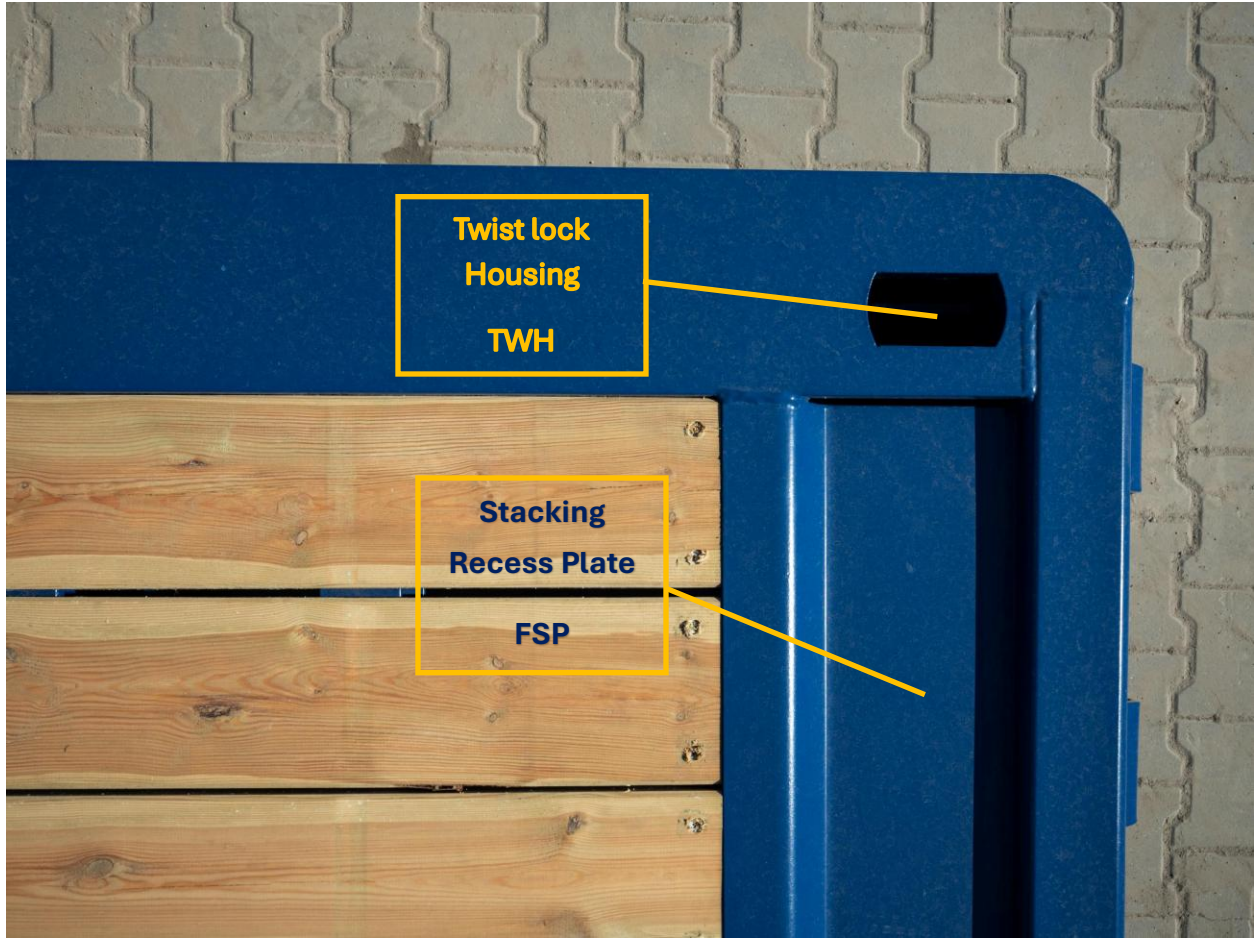


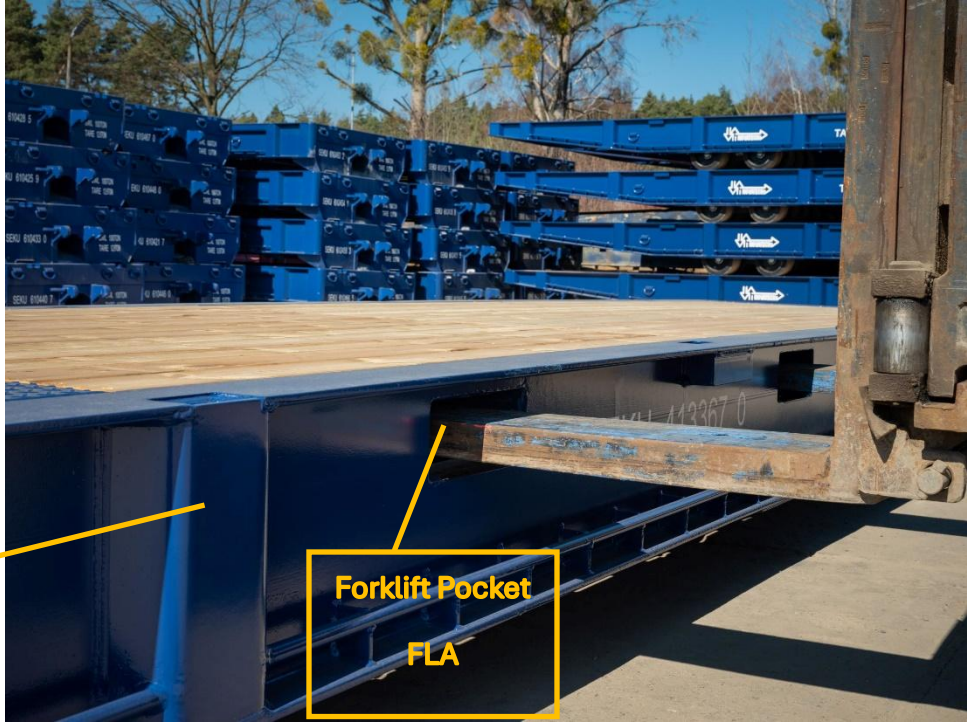
Weight Decal
MRU

Lashing Bar
LSB



Lashing Ring
LSR





**Stanchion
Pocket
SST**

**Forklift Pocket
FLA**



**Rocker Arm
Assembly
KEQ**

**Grease Nipple
KBZ**

**Forklift Pocket
Strap
FLS**

**Side Beam
Flange**
RLA



**Wheel Cup
/Hubcap**
KHC

Rim
KRM

Solid Tire
KTA

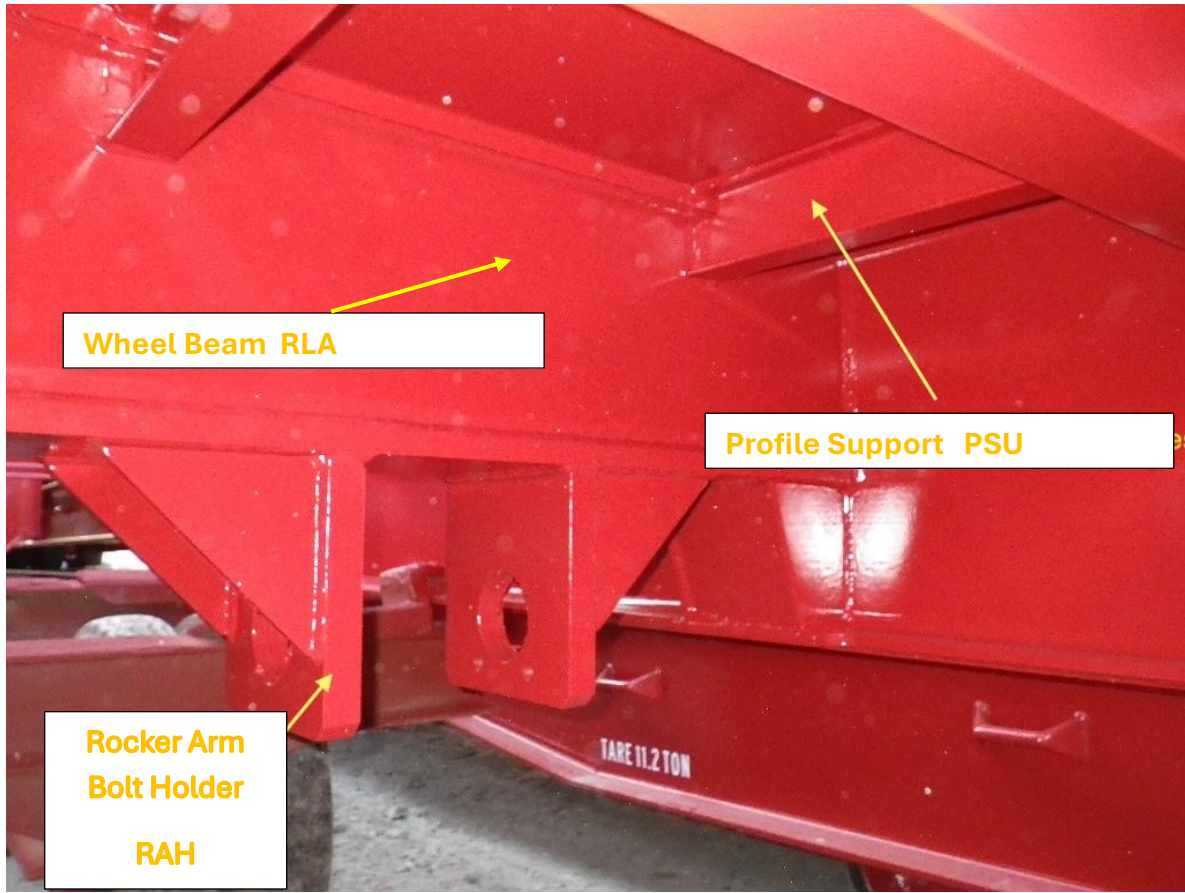


**Rocker Arm
Assembly**
KEQ



Crossmember
CMA

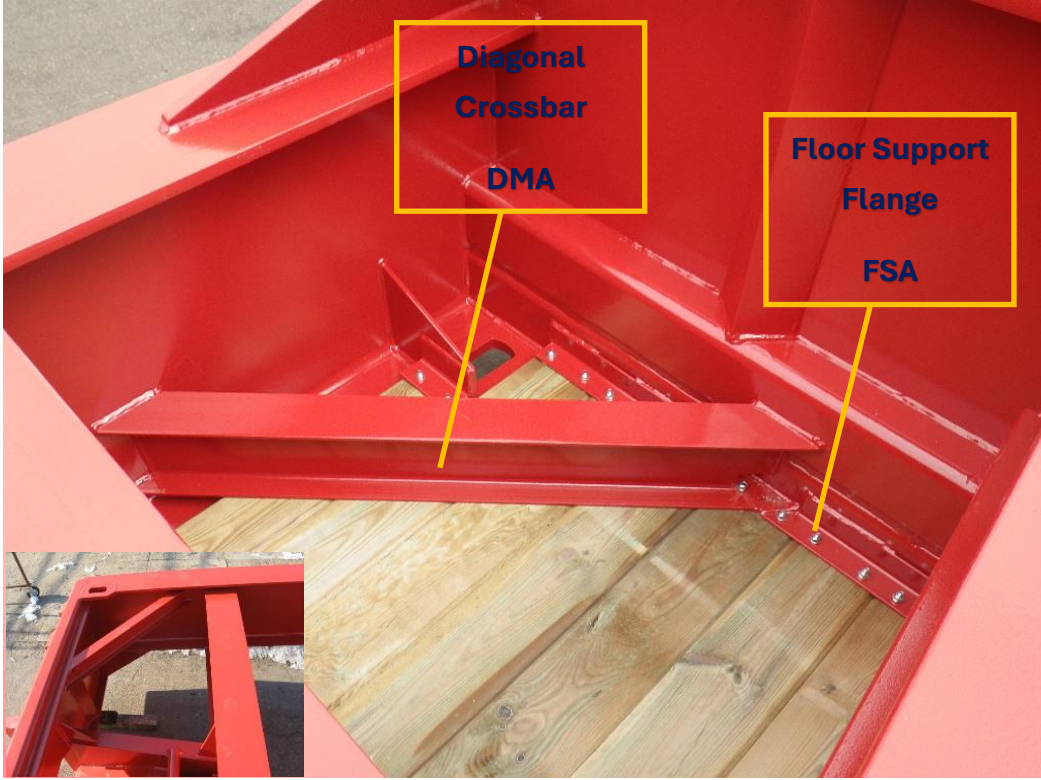
Floor Screws
HWR

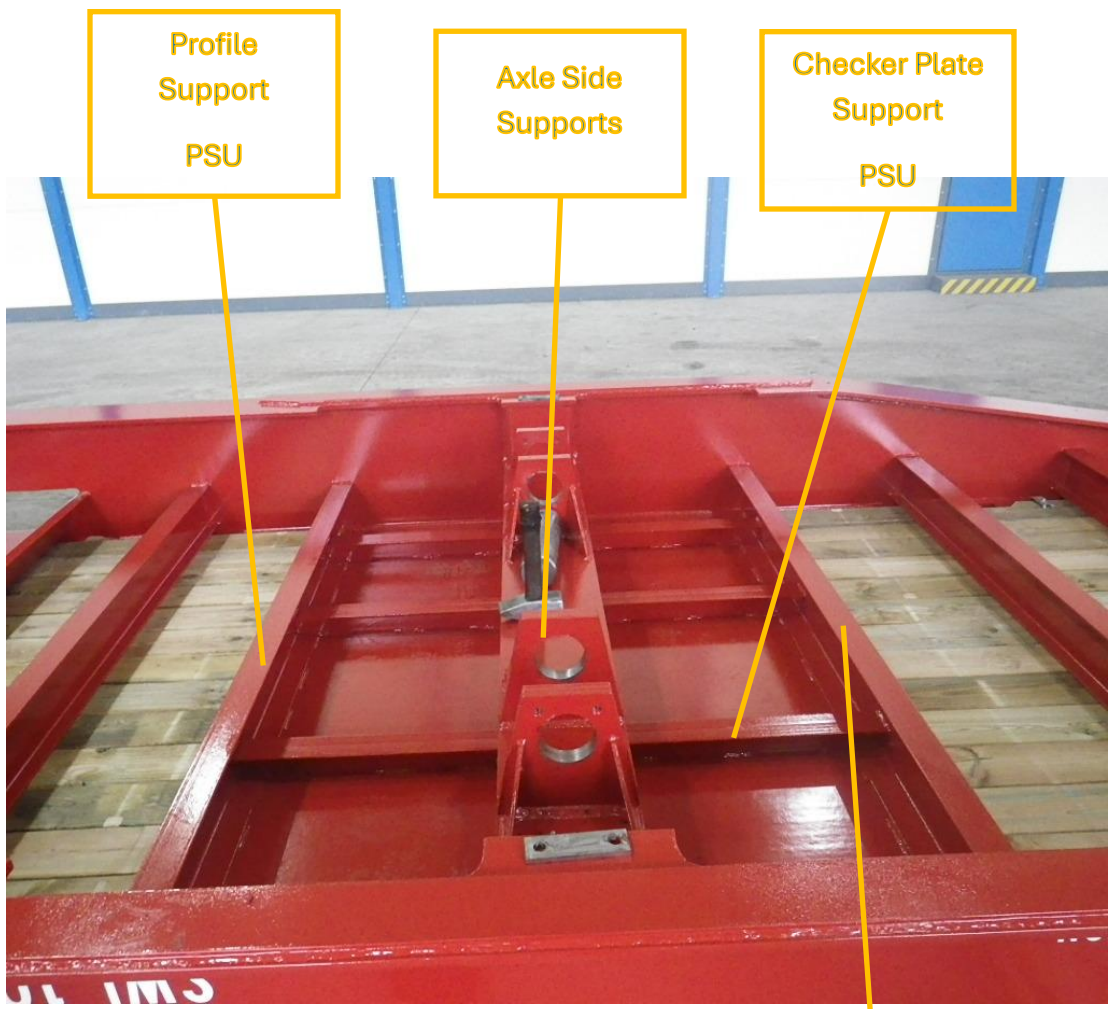


**Floor Support
Flange
FSA**



**Rocker Arm
Bolt Holder
RAH**





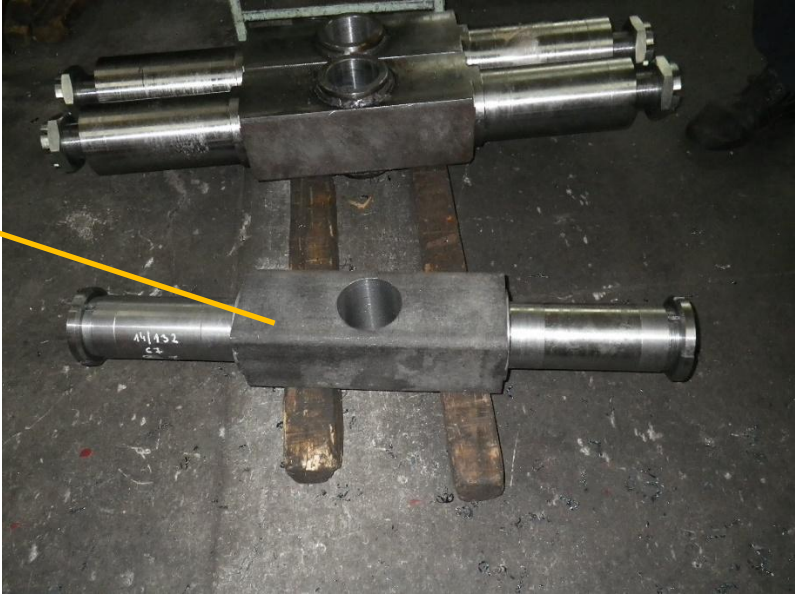
Profile
Support
PSU

Axle Side
Supports

Checker Plate
Support
PSU

Profile
Support

**Axle
Assembly
KAX**





Front Beam Bottom Scuff Plate

BSP

