



CHASSIS CODES STANDARD

“CCS”

Revision December 10, 2024.

Intermodal Container Chassis. Reference Guide to Component Codes.

Authors:

| | |
|-------------------|----------|
| Daniel Baran | DCLI |
| David Esposito | DCLI |
| Mario Anguiano | DCLI |
| Danny Peace | FLEXIVAN |
| Christopher Meyer | TRAC |
| Eugene Dima | TRAC |
| Ron Smejkal | TRAC |
| Adam Schroeder | TRITON |
| Michael Quiris | TRITON |

IICL Rep: Luiz F. Gonçalves

Disclaimer.

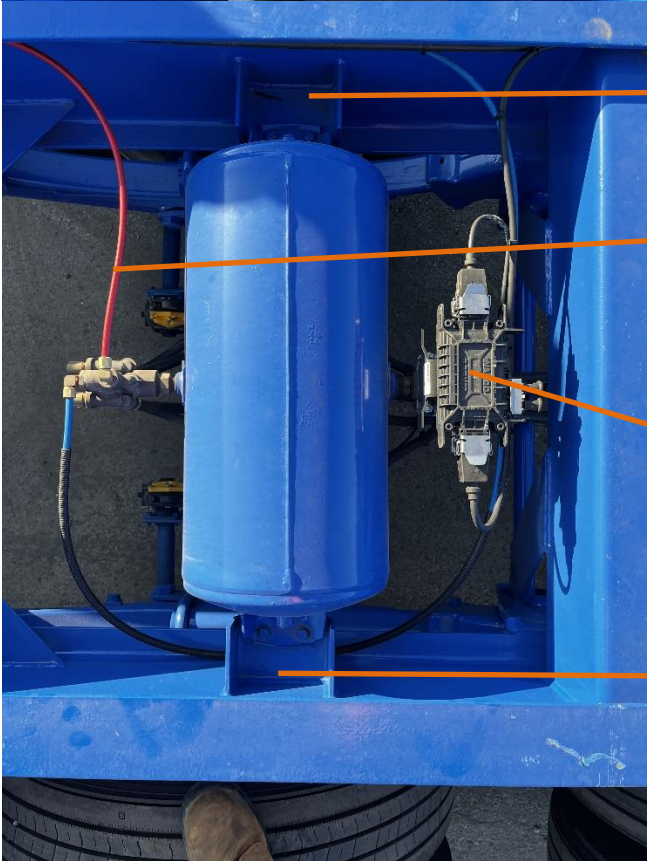
It is important to note that intermodal chassis designs and parts vary according to manufacturers and buyers' specifications. This document aims to show the common parts existing in many chassis currently in operations and the IICL recommended ISO/CEDEX codes for those parts. We welcome the input from stakeholders, and we are open to amending this document based on such recommendations.



**Air Reservoir
KRS**



**Air Tank mounting Bracket
KRB**

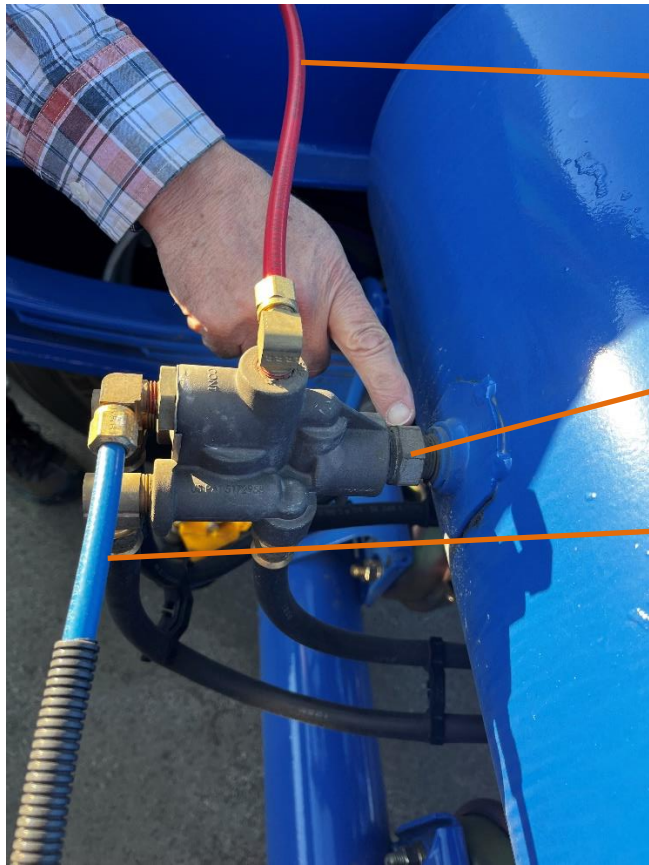


**Air Tank mounting Bracket
KRB**

**Brake Airline, Emergency
KBE**

**Brake ABS valve / ECU assembly
KAV**

**Air Tank mounting Bracket
KRB**

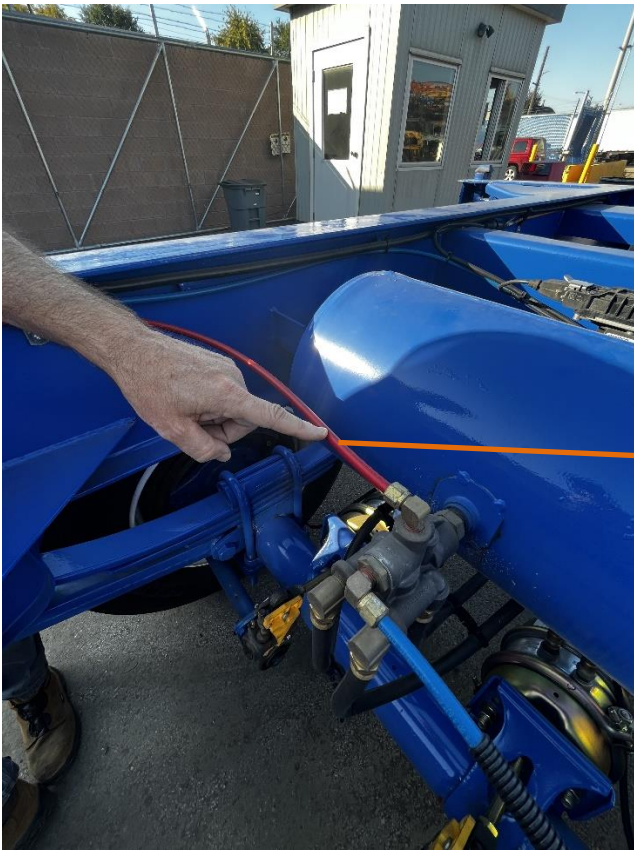


**Brake Airline, Emergency
KBE**

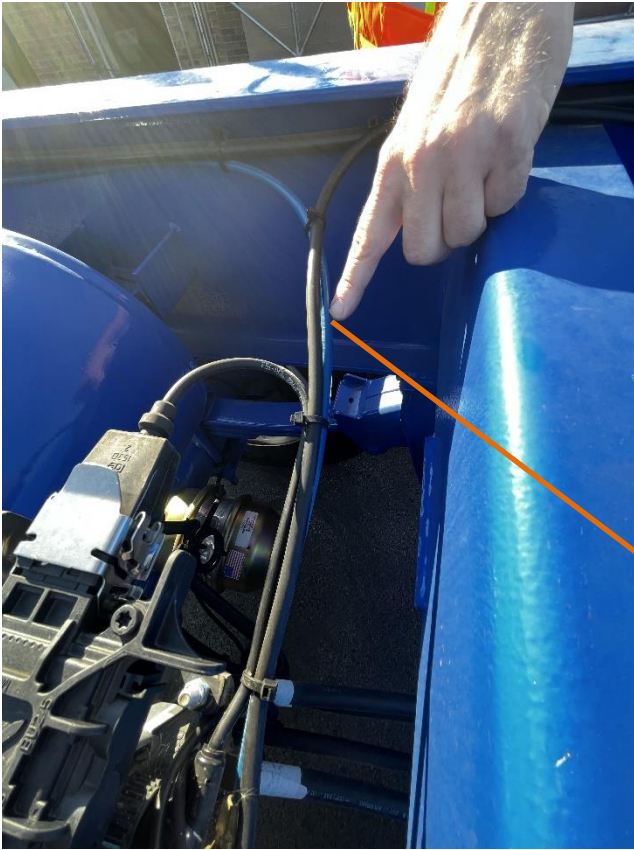
**Air Tank Nipple
KRN**

**Brake Airline, Service
KSR**

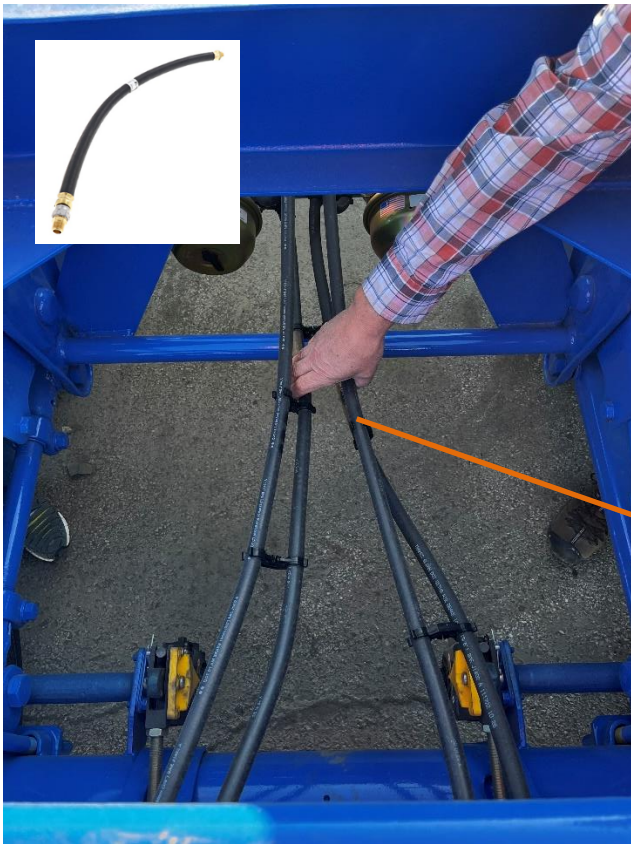




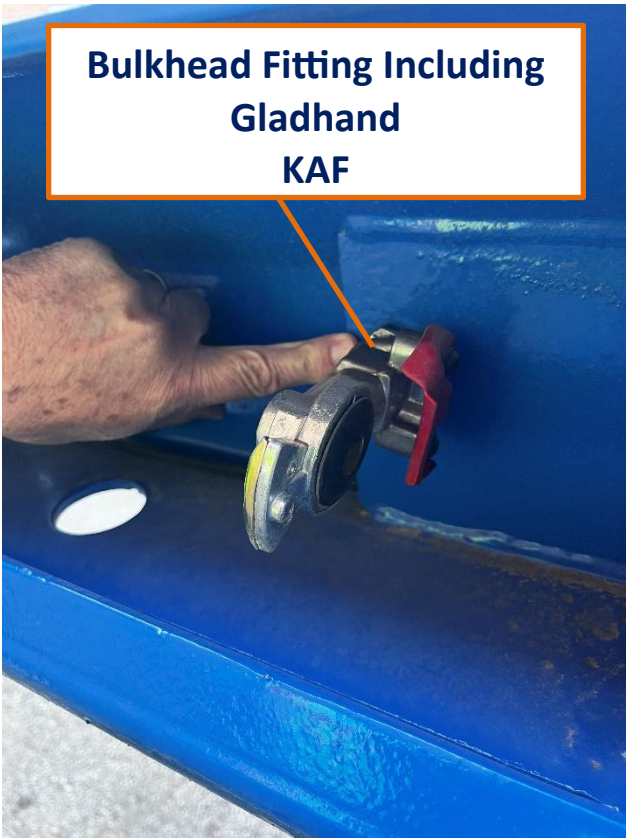
**Brake Airline, Emergency
KBE**



**Brake Airline, Service
KSR**



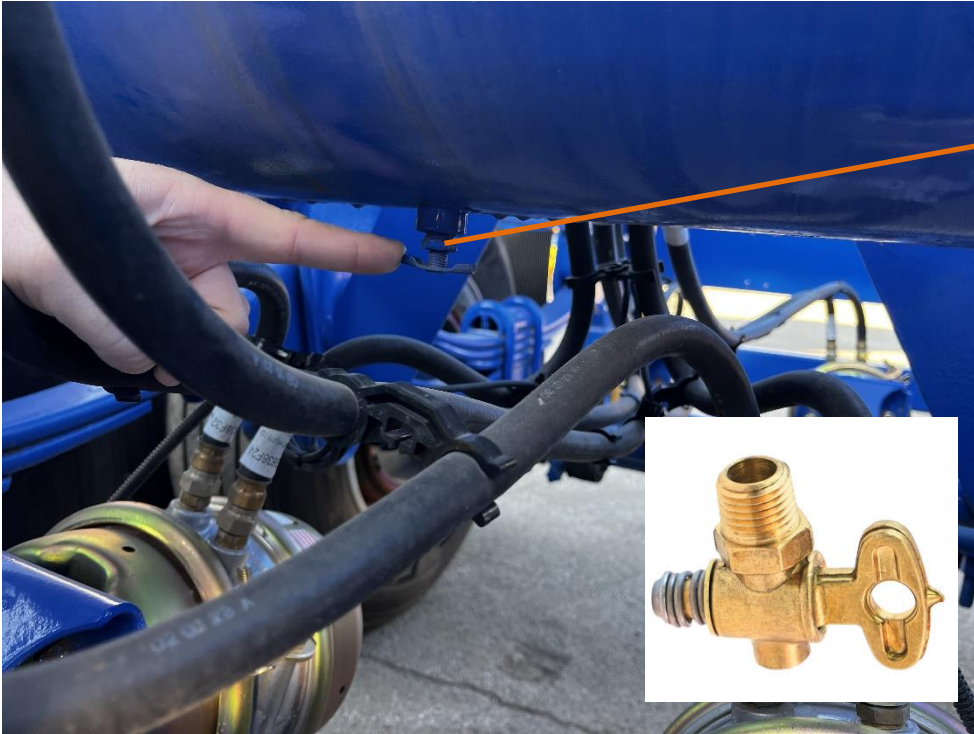
**Brake Hoses
KBH**



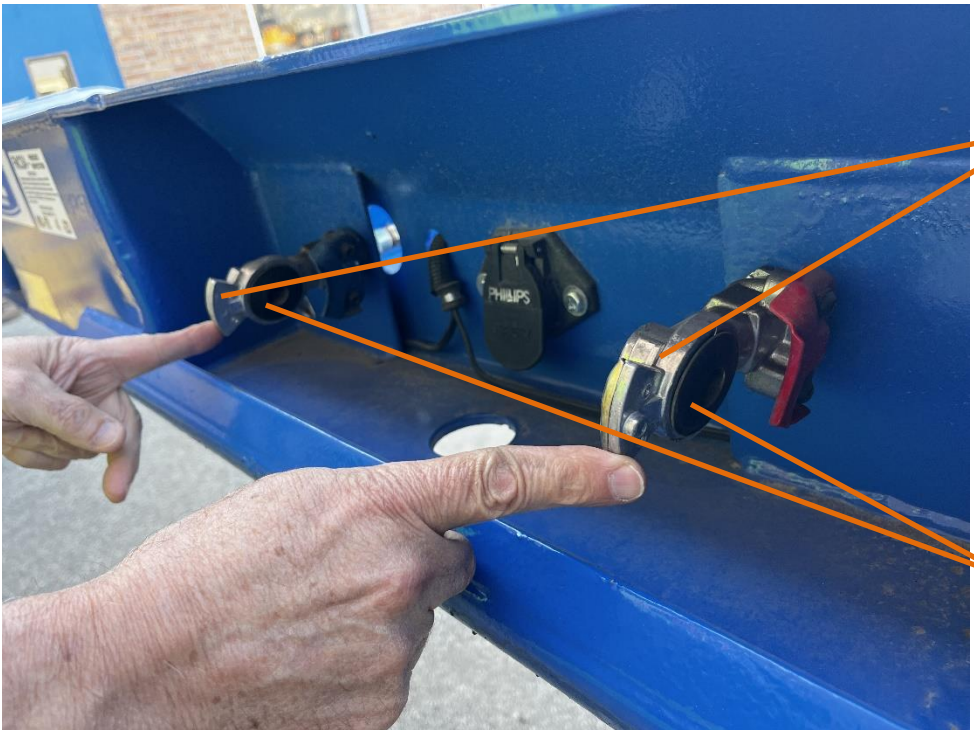
**Bulkhead Fitting Including
Gladhand
KAF**



**Gladhand Nipple
KAQ**



**Drain
KDV**



**Gladhand
KAC**

**Gladhand Seal
KAA**



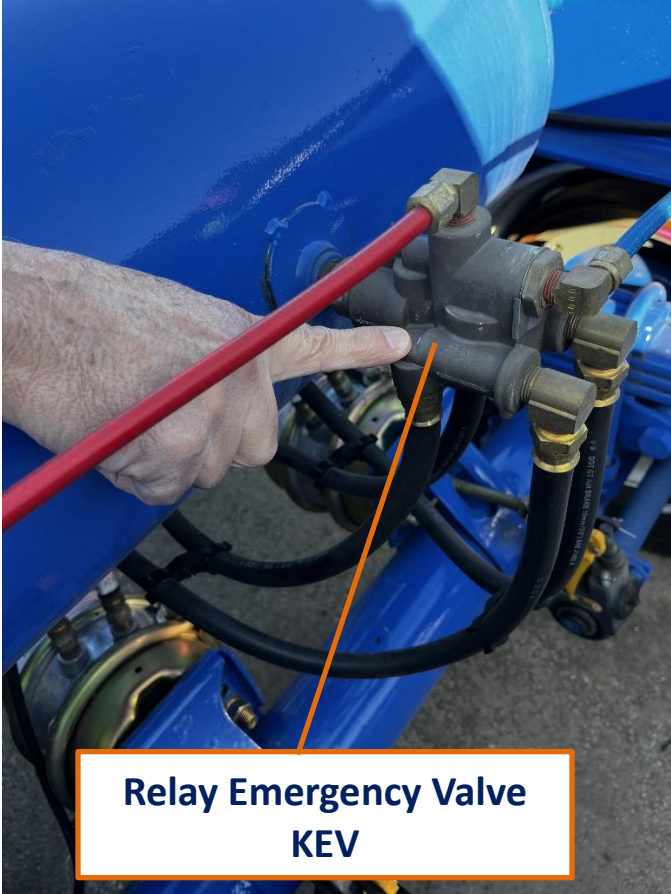


**(90 Degree Swivel) Gladhand
KAC**



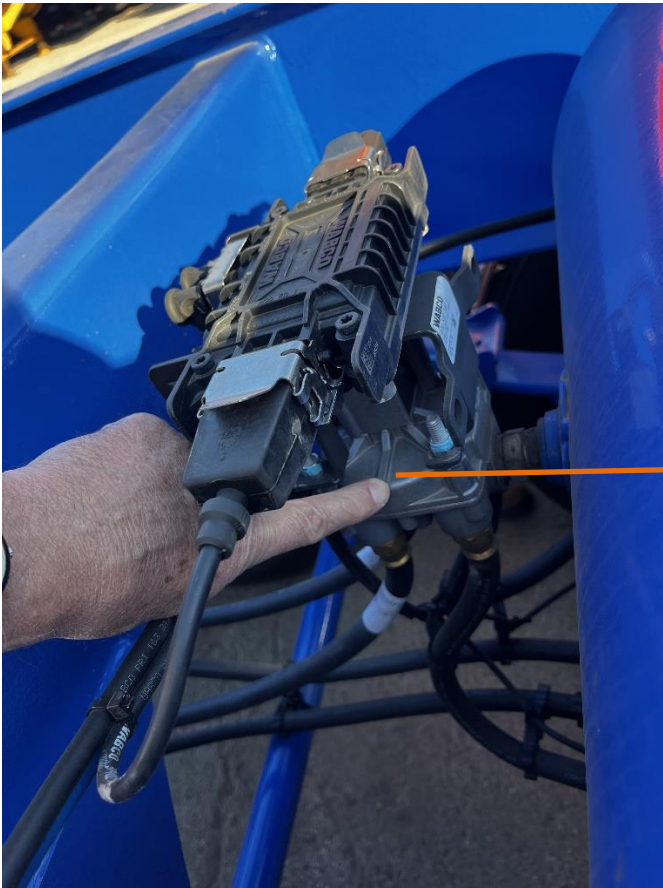
**Automatic Slack Adjuster
KTD**





**Relay Emergency Valve
KEV**





**ABS Valve Only
KRV**



**Brake ABS Valve / ECU Assembly
KAV**



**ABS / ECU Controller
(without valve)
KSC**



**Service Relay valve
KRV**



**Manual Slack Adjuster
KAD**



**Brake Shoe (with lining)
KSE**



**Brake Drum
KBD**



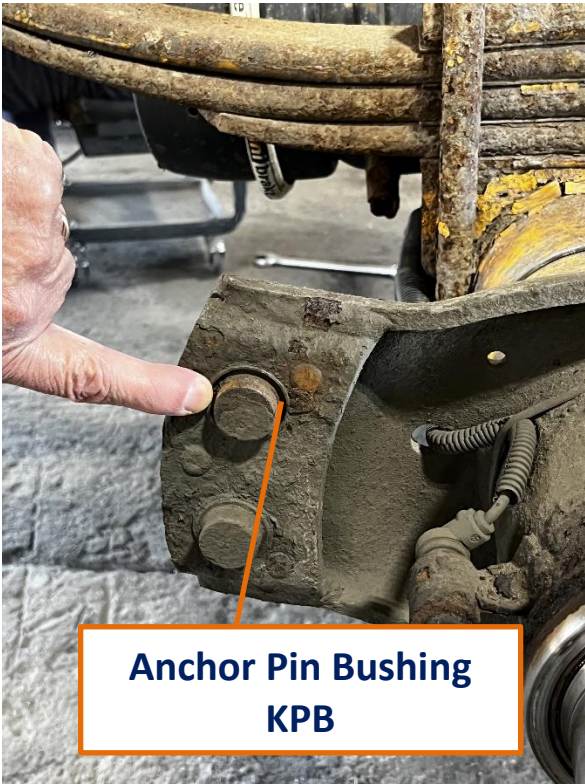
**Brake Shoe
KSE**



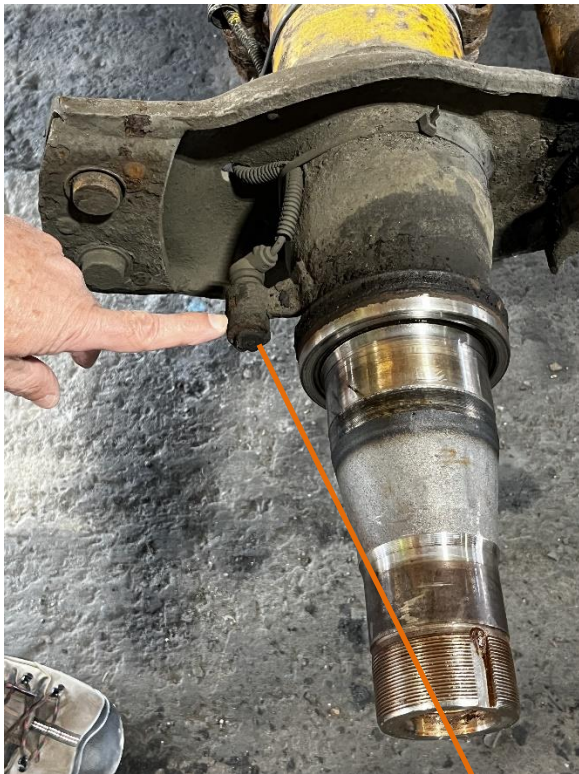
**Brake Drum
KBD**



**Brake Drum
KBD**

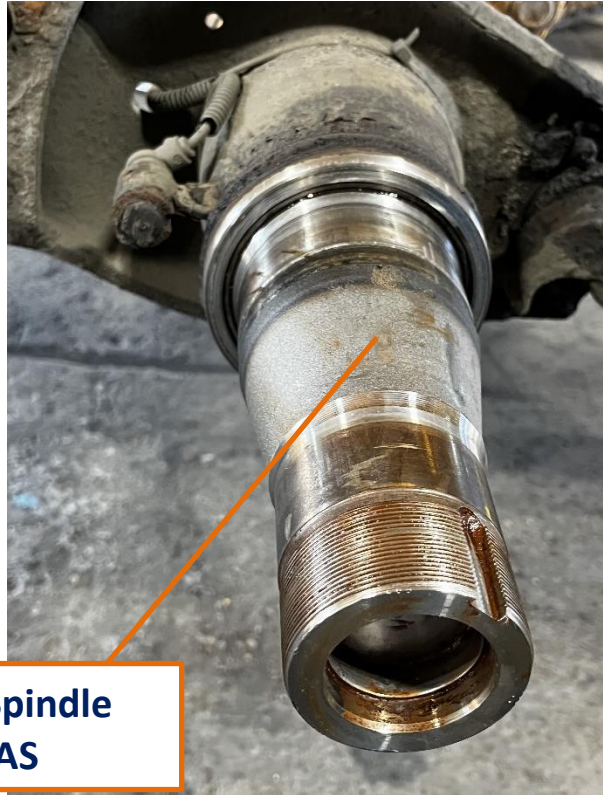


**Anchor Pin Bushing
KPB**



**ABS Sensor Kit
KSK**





**Axel Spindle
KAS**



**Brake S-Cam Shaft
KCS**

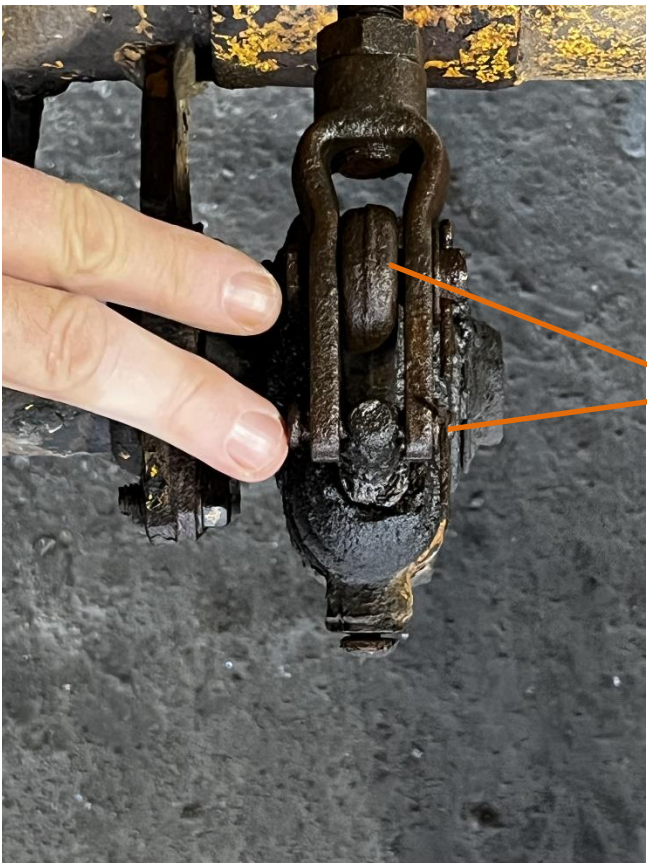




**Outer S-Cam Bushing
KCH**



**Brake Clevis
KCV**



**Auto Adjuster Clevis Pins
KCP**



**Brake Shoe
Repair kit**



**Brake Shoe Assembly
KSA**

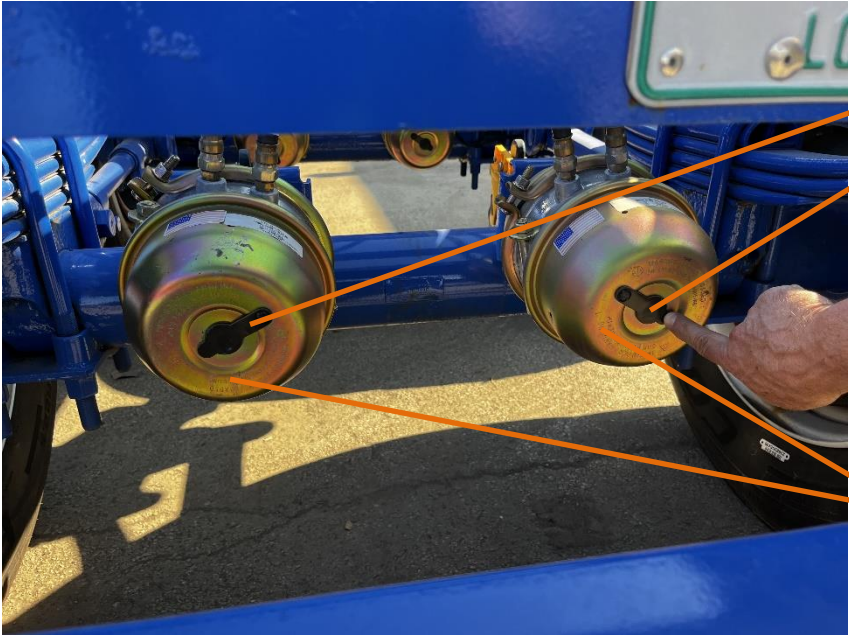


**Brake Chamber
Mounting Bracket
KBM**





**Brake Chamber Push Rod
KPR**

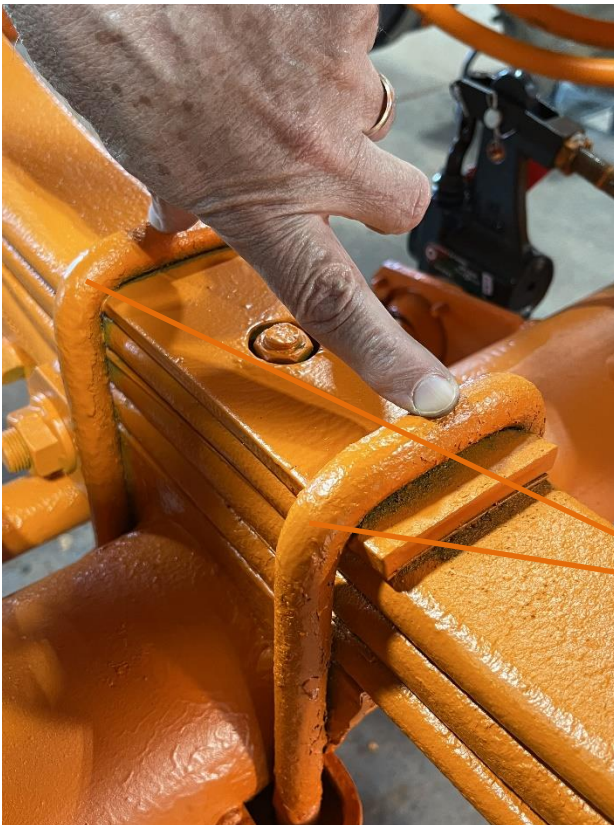


**Spring Brake Dust Plug
KDC**

**Brake Chamber
KSB**



**Brake Spider
KBS**



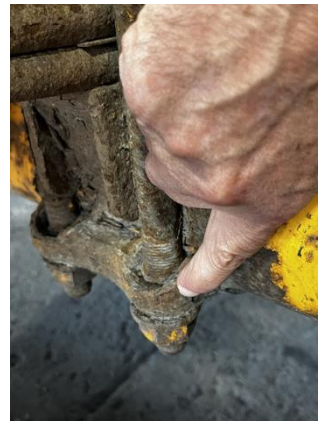
**U-Bolt Only
KUX**



**Spring Seat
KST**

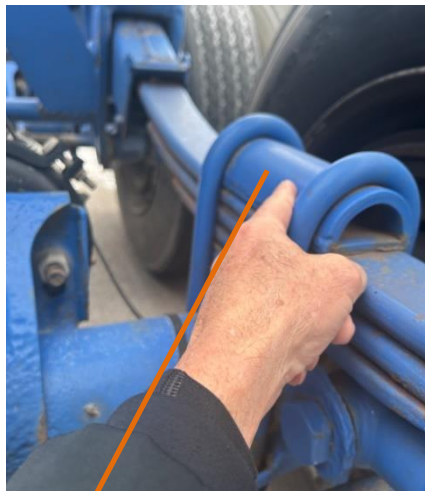


**Spring bottom plate
SBP**





**Spring Seat
KST**



**U-Bolt Top Plate
KUS**



**Rear Spring Hanger
KRH**

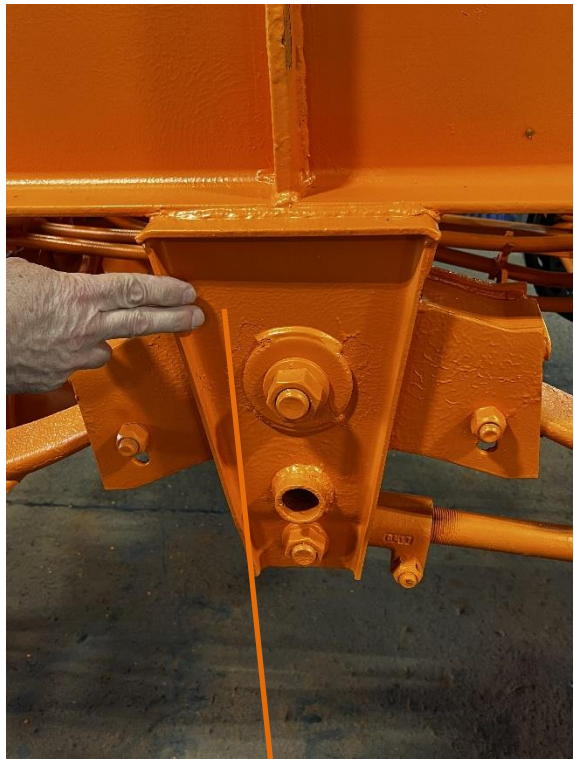


**Front Spring Hanger
KFH**



**Central equalizer assembly
KQA**

**Equalizer Rocker Beam
KEQ**



**Equalizer Hanger
KQH**



**Rear Spring Hanger
KRH**



**Adjustable Radius Rod
KRR**



**Adjustable Radius Rod
KRR**



**Fixed Radius Rod
KNR**



**Stabilizer Bar
KHB**



**Auto Slack Adjuster
ASA**



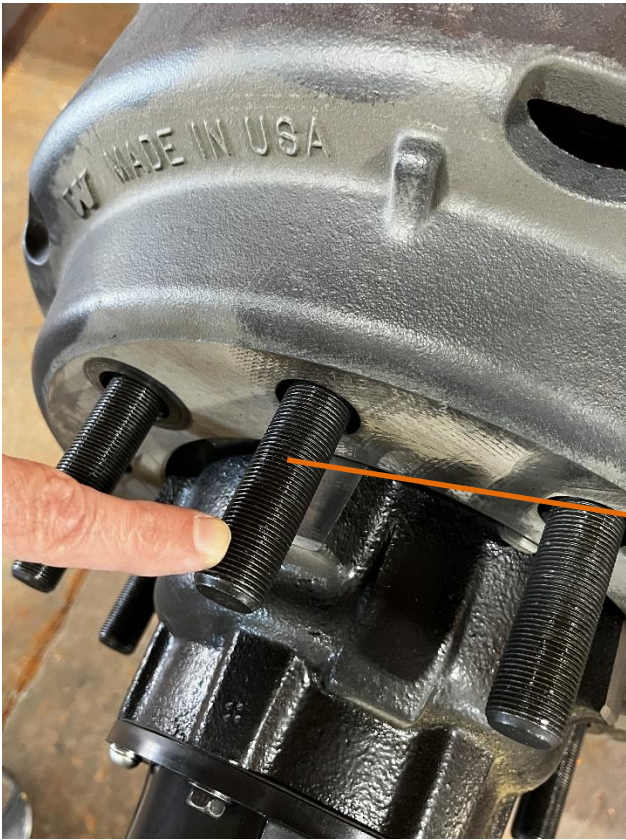
ABS Tone Ring



Hub Pilot Brake Drum



**Hub Cap-Grease
KGH**



**Wheel Stud
KWS**



**Outer Bearing Race
KWO**



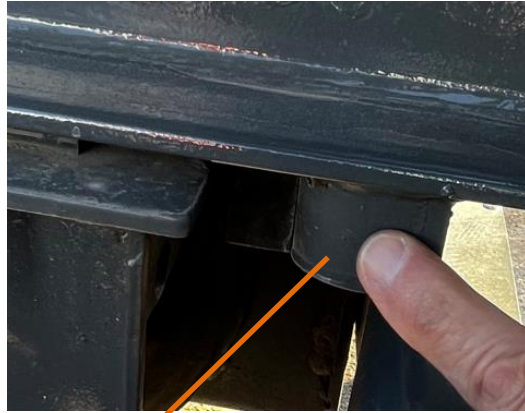
**U-Bolt Saddle (Top Plate)
KUS**

Axle



**Interim frame cross members
KIX**

**Sub Frame Rails
KSF**



**Slider Bumper Stop
KBT**



**Slider Bumper Stop
KBT**



**Main frame mounted guide plate
KGP**



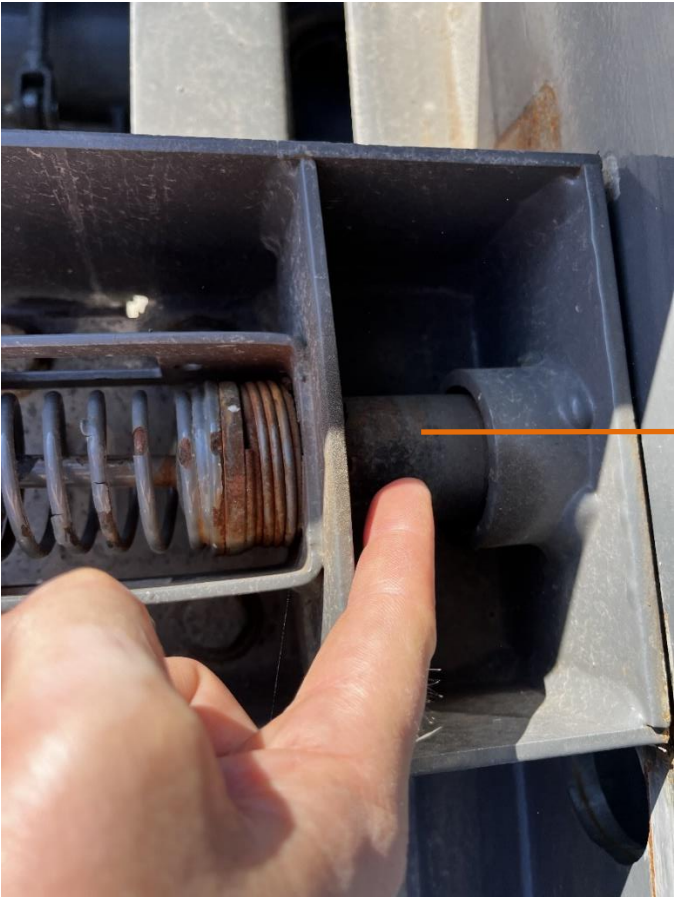
**Slider lock handle striker
plate
KHM**



**Brake Quick Release Valve
KQR**



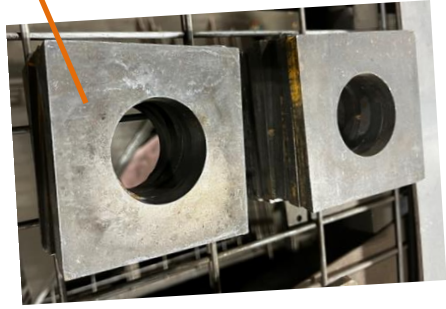
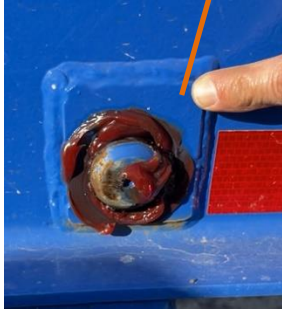
**Index Pin / Slider
KIA**



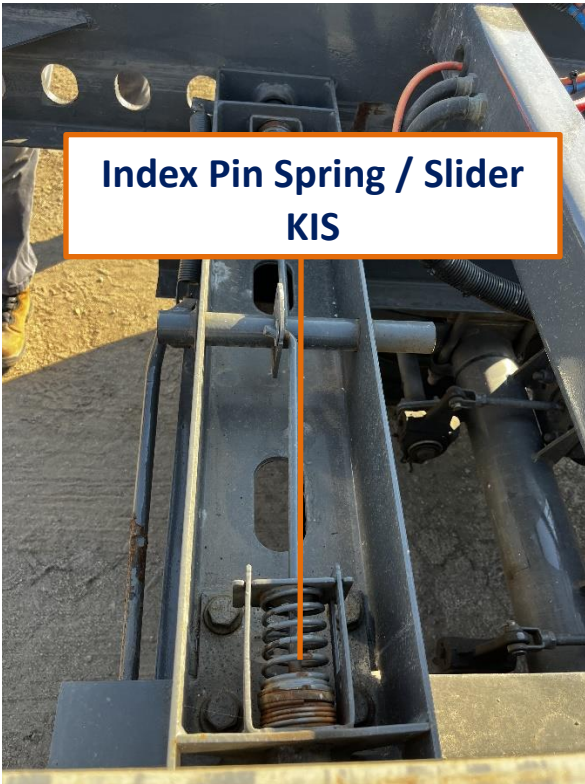
**Index Pin / Slider
KIA**



**Index Pin Reinforcement Plate
Slider locking pin orifice – Single Hole
KSM**



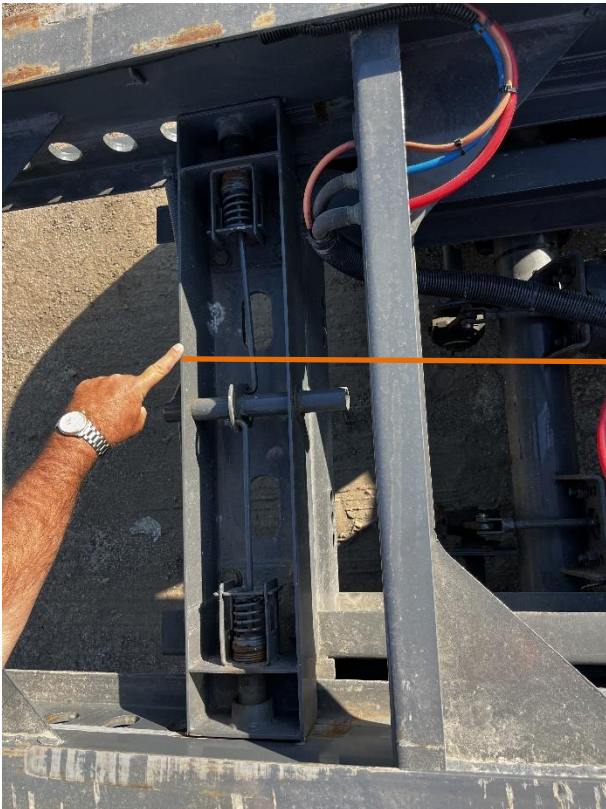
**Slider Locking Pin Orifice Reinforcement
Plate - Multi Hole
KMH**



**Index Pin Spring / Slider
KIS**



**Slider Pin Linkage Arms
KLX**



**Slider Pin Cage Assembly
KPC**



**Slider Pin Handle Spring
KPX**



**Slider Pin Linkage Arms, springs
KLX**



**Slider Pin Release Handle
KSZ**



**Slider Pin Release Handle
Retainer
KSV**

**Slider Rail Assembly
KEX**



**Frame extension
rollers/slide pads
KFS**





**Running Light
KRL**



**Side Marker Light
KSL**



**Side Marker Light
KSL**



**Running Light
KRL**

**Reflector
KRF**

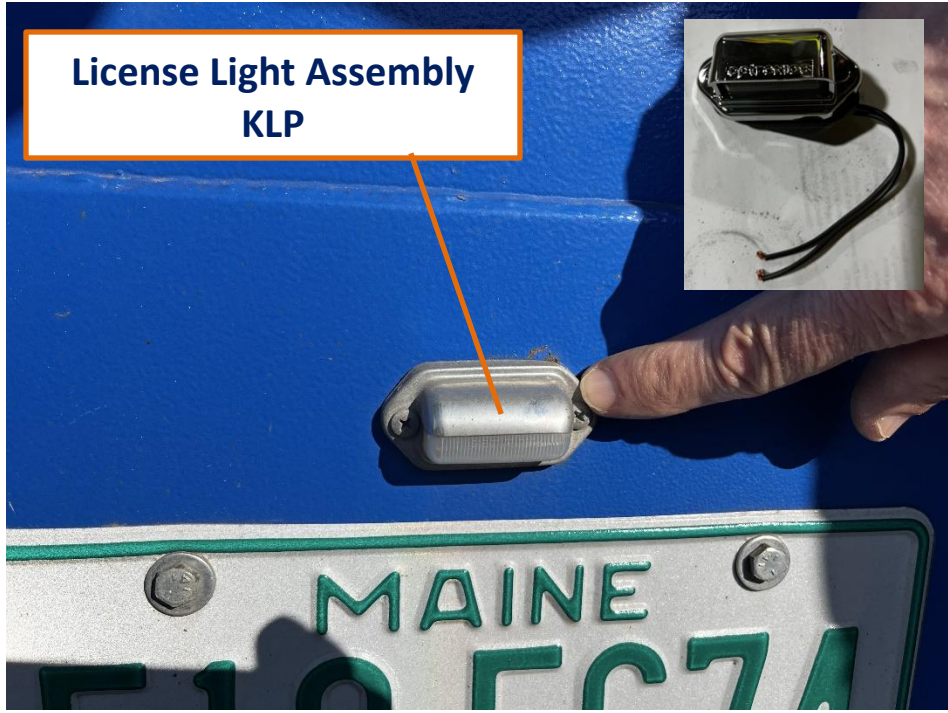


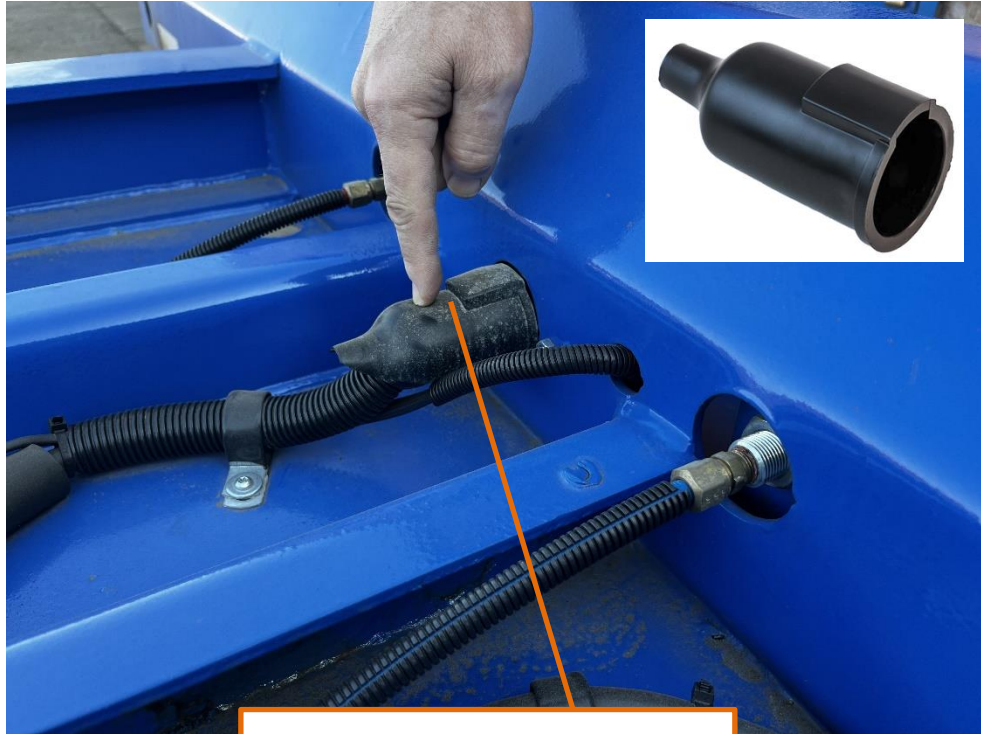


**Identification Lights
KIC**



**Stop / Tail / Turn Light Assembly
KTL**





**Electrical connector boot
KEB**

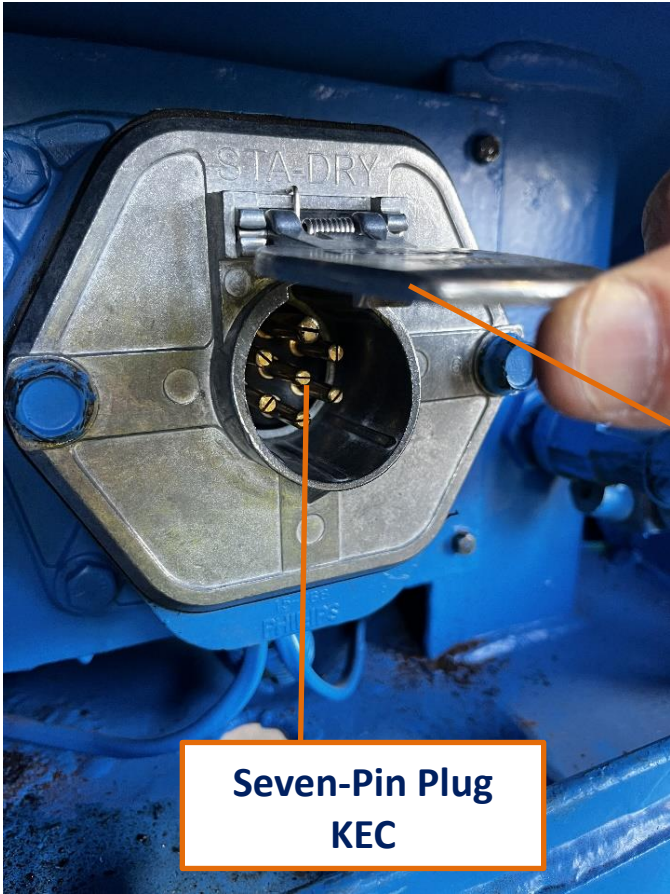


**Electrical connector boot
KEB**





**Seven Way Plug Mounting Plate
KEP**



**Receptacle Cover
KEZ**

**Seven-Pin Plug
KEC**

**Electrical Connector Boot
KEB**



**Airline Hose Clamp
AHC**

Service Bulkhead Fitting

Emergency Bulkhead Fitting



**Bolster Gusset Support / Bracing
KGU**



**Bolster Gusset Support / Bracing
KGU**



**Bolster Horn
KCG**



**Crossmember Gusset / Stiffener
KXG**



**Crossmember
KXM**



**Gooseneck
Crossmember
KGX**





**Gooseneck
KGN**



**Gooseneck
Transition Plate
KTR**





**Slider Pad- Bolted on Type
KSQ**



**Crossmember
KXM**



**Kingpin
KKP**



**Kingpin Plate
KKT**



**Kingpin Reinforcement Framing
KKT**



**Gooseneck
KGN**



**Kingpin Reinforcement Framing
KKT**



**Main Frame Mounted Stop Block
KFX**



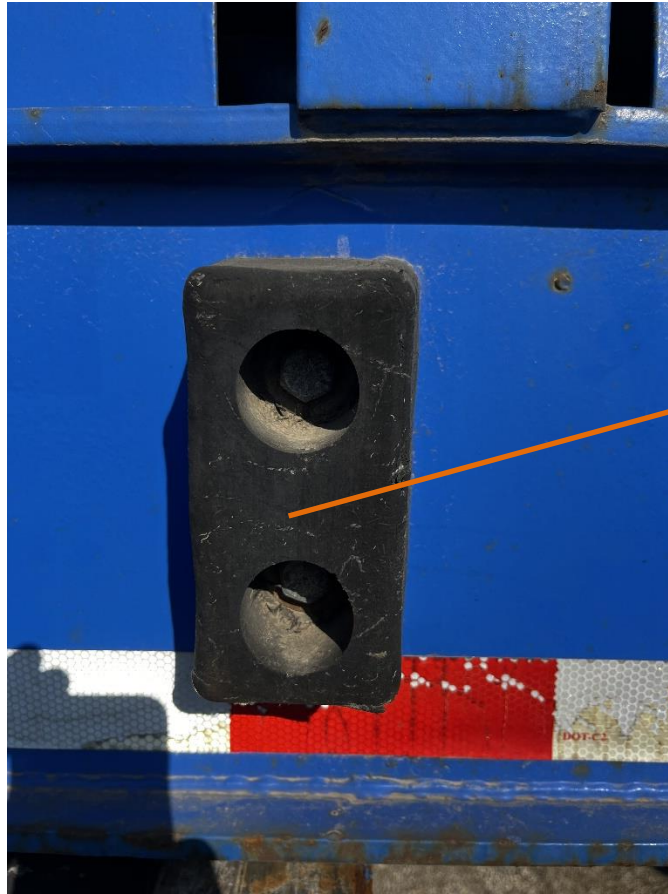
**Slider Handle Retainer – 40 ‘/45’
KSV**



Chassis Main Rail
KMR



Main frame structural assembly
KFA



**Dock Bumper
KDP**



**Document Holder
KDH**



**Mud Flap Strap
MFS**

**Mud Flap
KMF**



**Mud Flap Bracket
KFB**



**Mud Flap Mounting Bracket
KMB**



**Push Pin
KPL**





**Rear Impact Guard
KBP**



**Rear Impact Guard
Filler Plate
KBF**

**Reflective or
Conspicuity Tape
KRT**



**Rear Impact Guard Uprights
KBU**



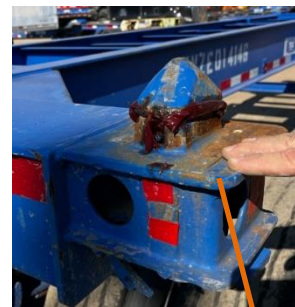
**Twist Lock Housing –
Drop-In Style
KTK**



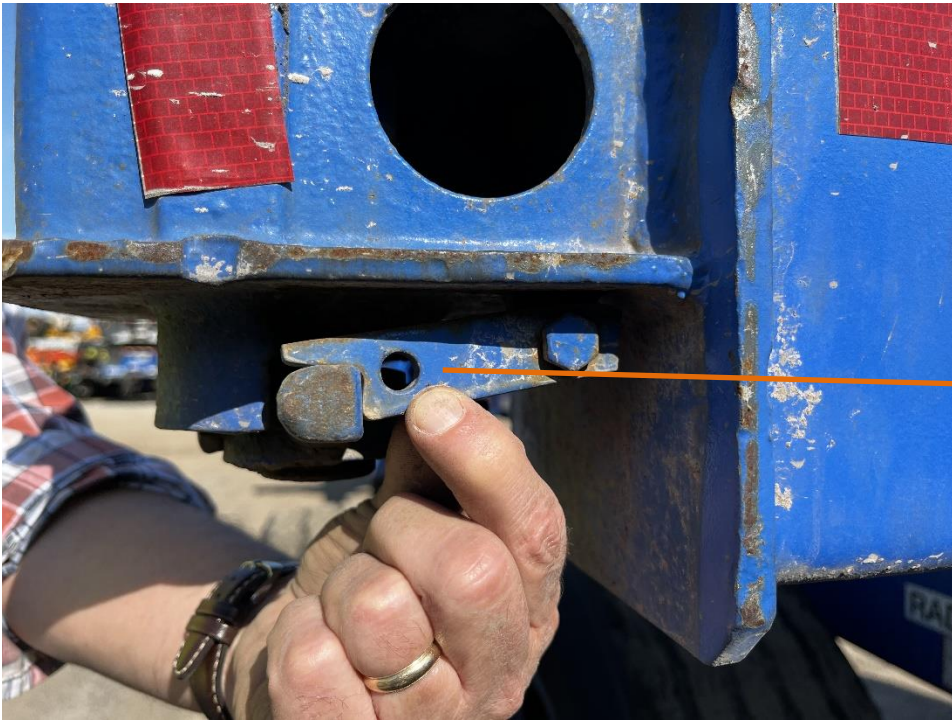
**Twist Lock Handle / Pin Lock
Handle
KTH**



**Twist Lock Housing –
Drop-In Style
KTK**



**Twist Lock Housing - Cap
Style
KTO**



Twist Lock Handle Retainer



Twist Lock Handle Retainer



**Dust Cover
KDM**



**Gearbox Cover
GBC**



**Gearbox (inside)
KGR**



**Land Leg Crank Handle
Retainer
KHR**



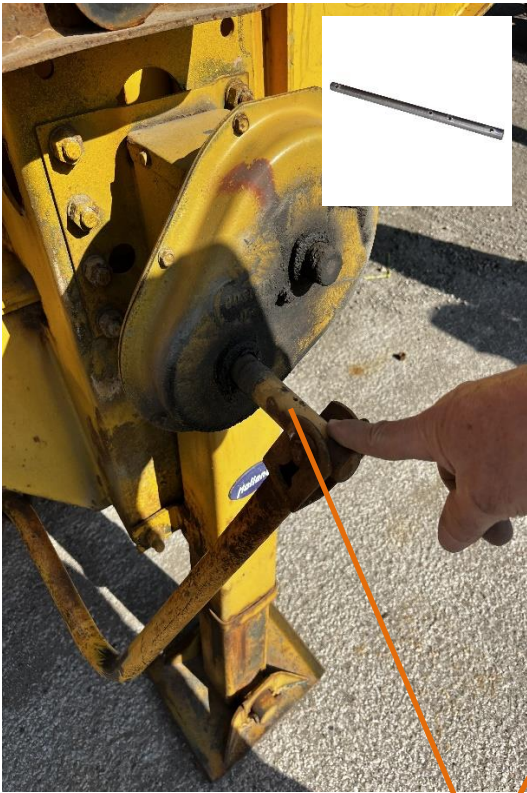
**Land Leg Crank Handle
Retainer
KHR**



**Sand Shoe Axle Housing
("T-stamp")
KHA**



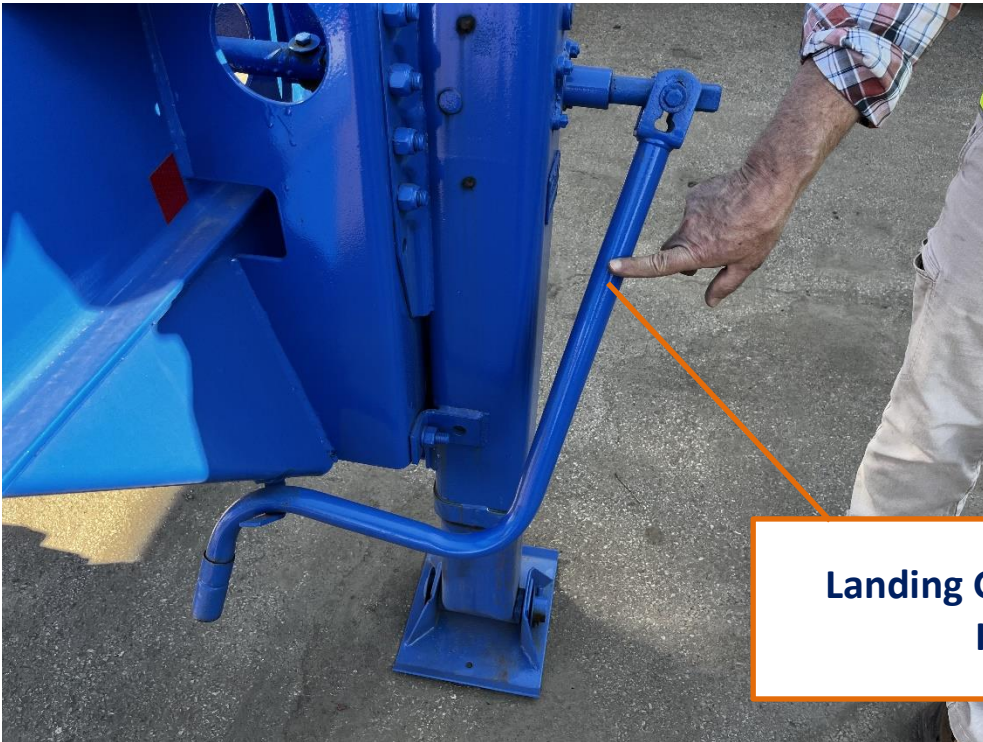
**Landing gear brace ear
KLZ**



**Landing Gear Crank Shaft
KKS**



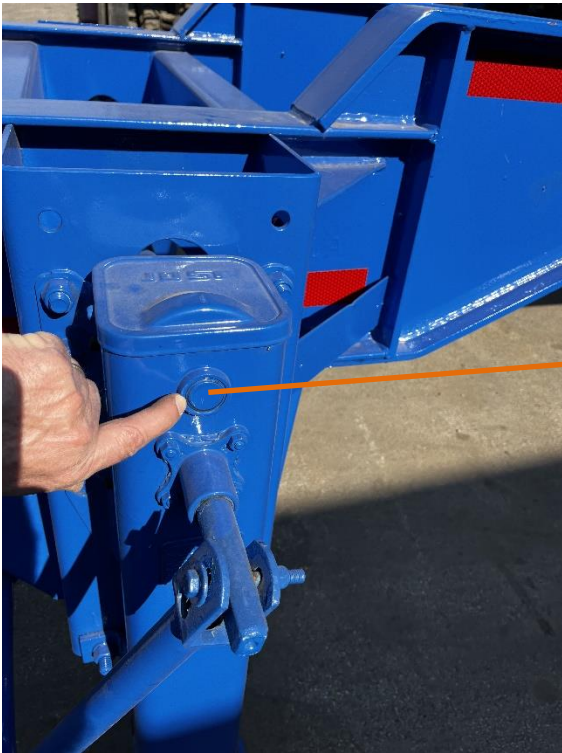
**Landing Gear Cross-Shaft
KLY**



**Landing Gear Handle
KLH**



**Landing Gear Mounting-Bracket
KLM**



**Pinion Shaft
KPS**



**Landing Leg Cross Brace
CBL**



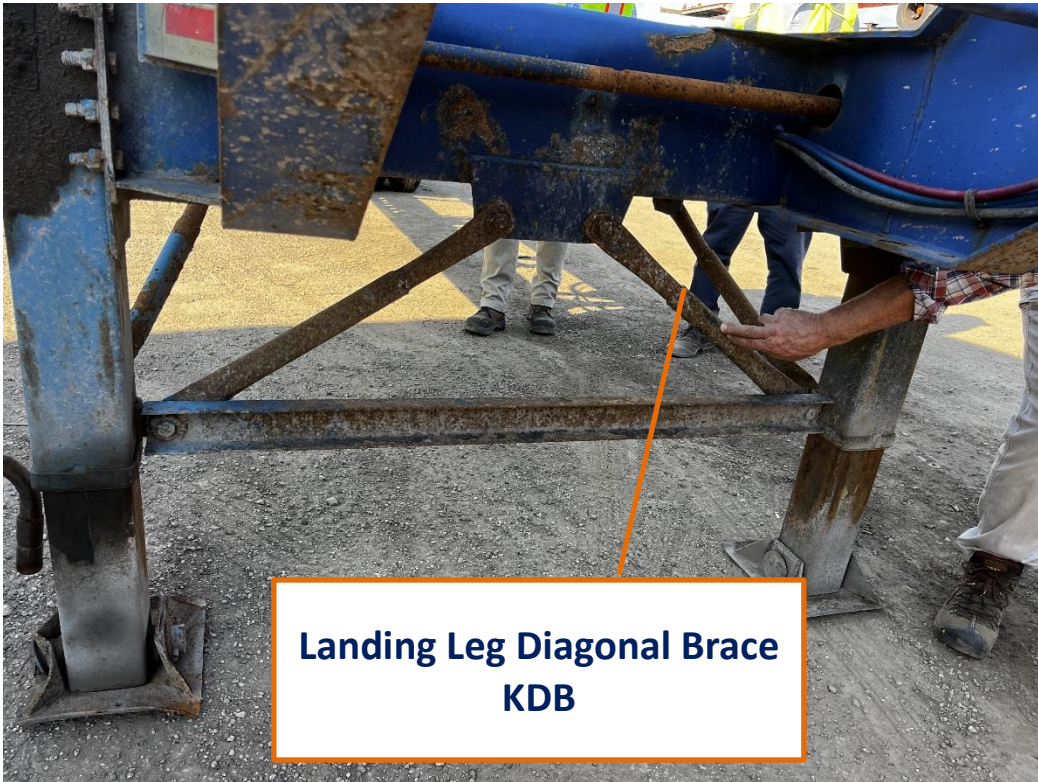
**Landing Leg Sandshoe
KLN**



**Landing Leg Shoe Axle
KLE**



**Landing Leg Diagonal Brace
KDB**



**Landing Leg Diagonal Brace
KDB**

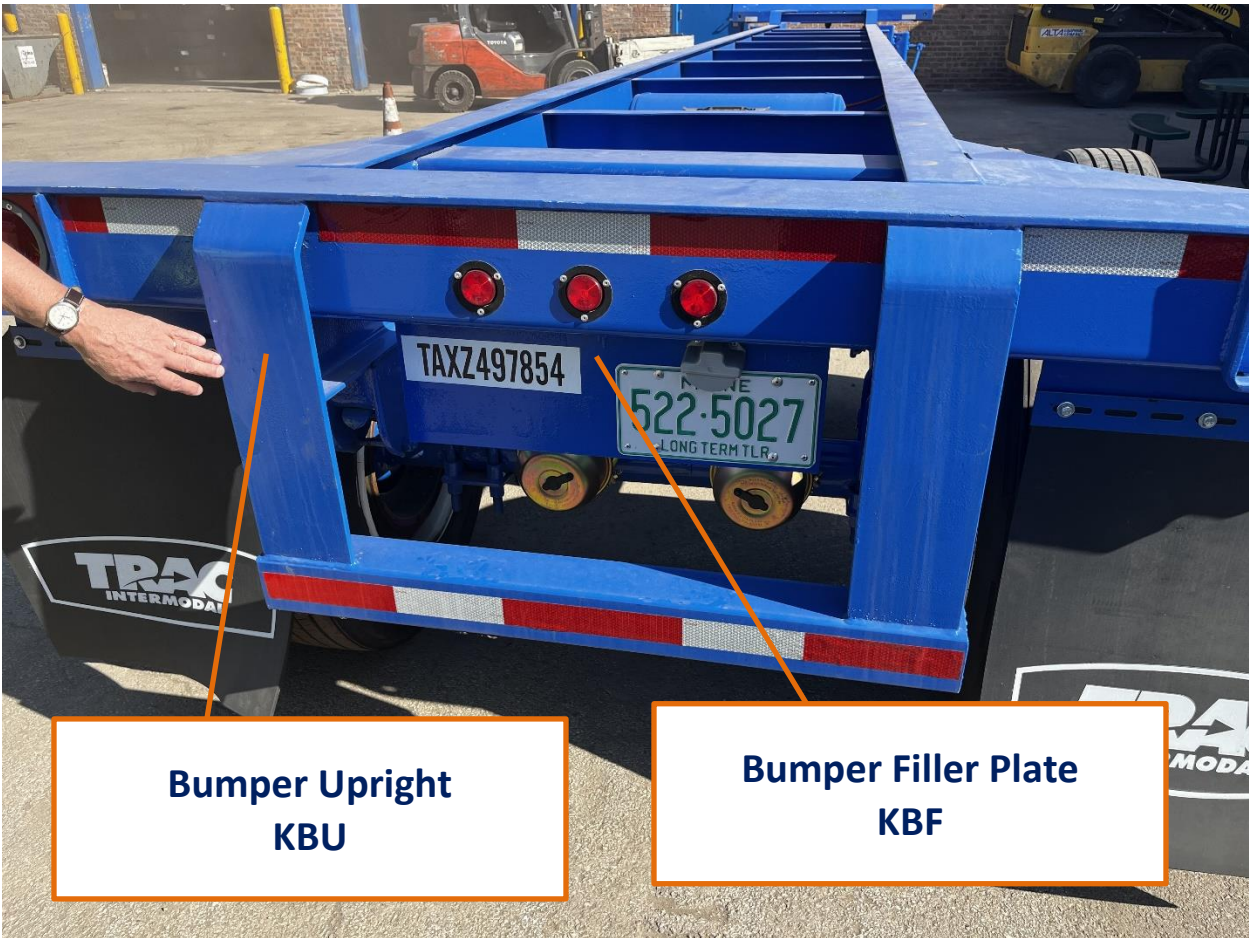


**Reflective or Conspicuity Tape
KRT**



**Bumper Crosspiece
KBP**

**Reflective or conspicuity
Tape**



**Bumper Upright
KBU**

**Bumper Filler Plate
KBF**



**Hub Cap Grease
KGH**



**Rim Clamp
KRC**



**Rim Spacer
KRX**



**Main frame mounted
guide plate
KGP?????? If so move up**



**Rim – Tubeless Type
RTL**



**Tire Bias
KTA**



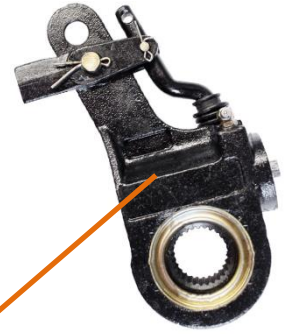
**Tire Radial
KTN**



**Valve Stem Cap
KVC**



**What should we show?
Delete photo?**



**Automatic Slack Adjustor
KTD**



**Brake Clevis Pin
KCP**



**Satellite Tracking Unit (GPS)
STU**



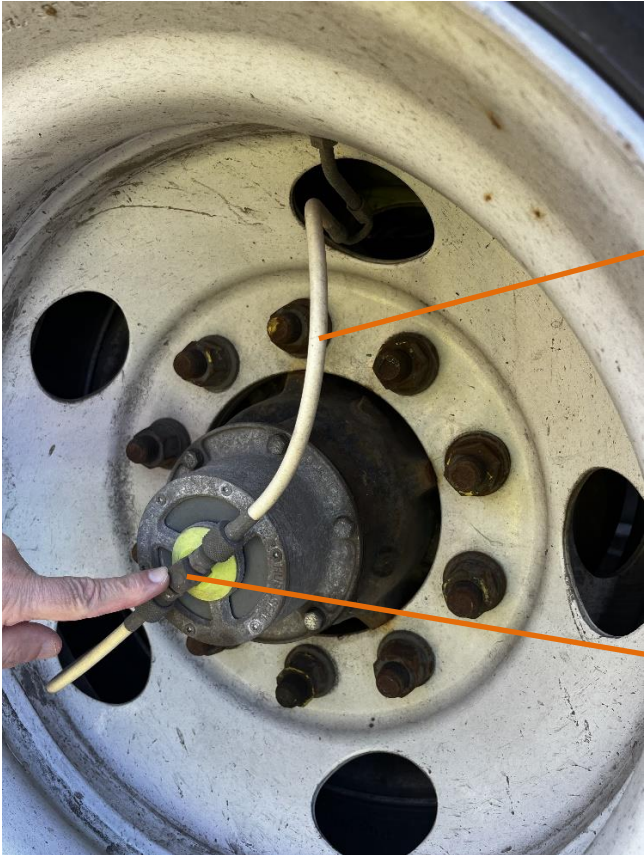
**Grease Fitting
KBZ**



**Grease Fitting
KBZ**



**Seven Way Plug Mounting Plate
KEP**



**Tire Inflation System - Long Hose
PLH**



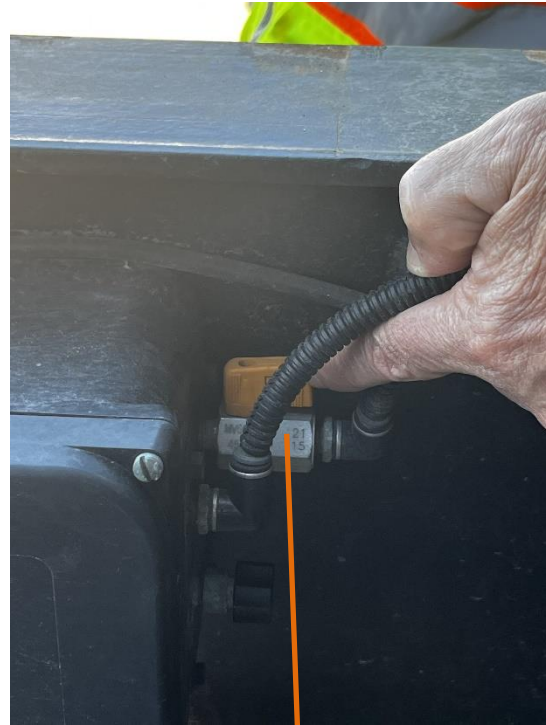
**Tire inflation system -
THRU-TEE assembly
PTF**



Tire Inflation system - Short Hose
PLS



**Auto Inflation System
PAS**



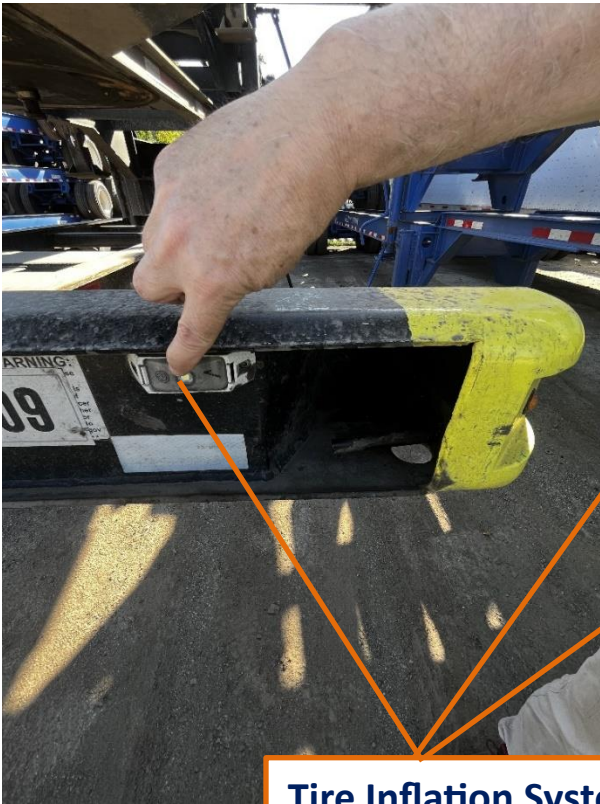
**Auto inflation Shut Off Valve
POV**



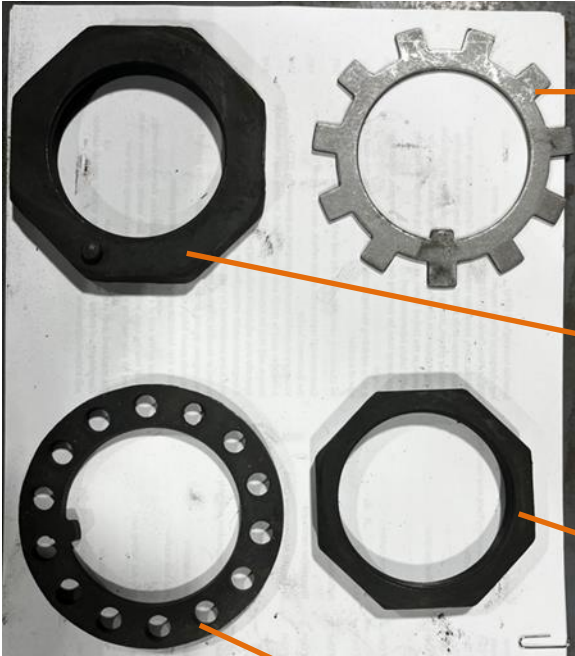
**Auto Inflation 90-
degree fitting
PNF**



**Tire inflation system -
long hose
PLH**



**Tire Inflation System - Indicator Light
PIL**



**Axle Spindle Lock Washer
- Tab Type
KAW**

**Axle Nut
KAN**

**Axle Nut
KAN**

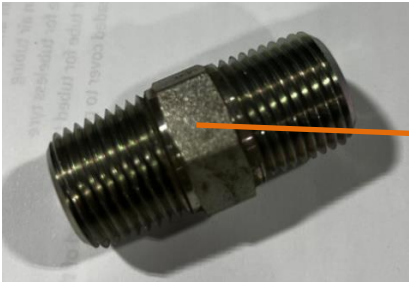
**Axle Lock Washer
KAW**



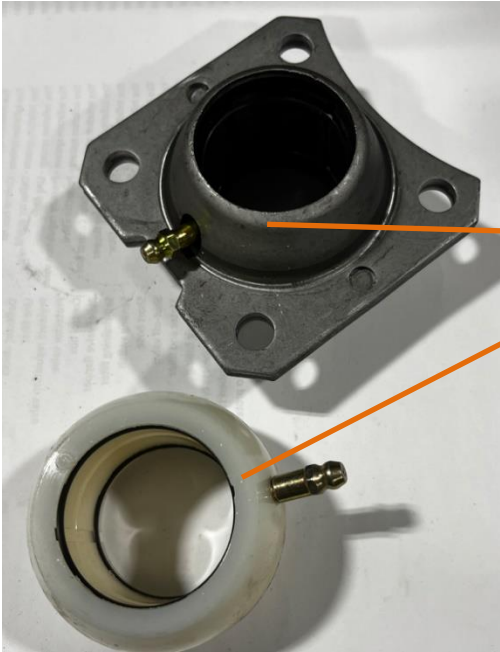


**Outer wheel bearing with race
KWO**

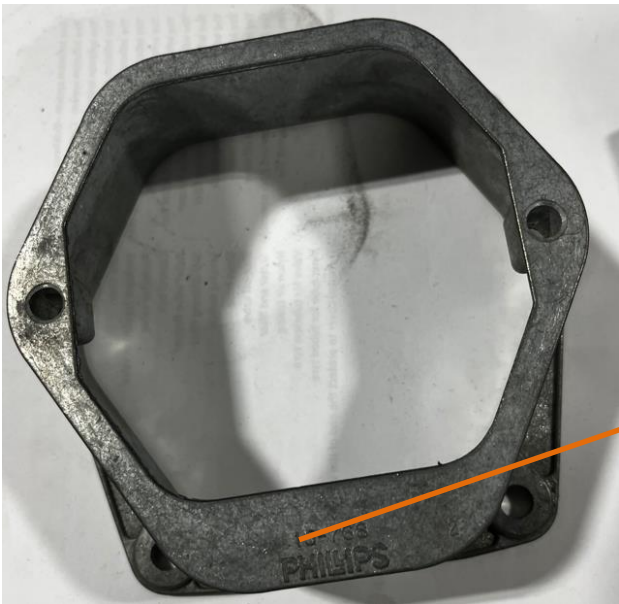
**Gladhand Bulkhead
Fitting**



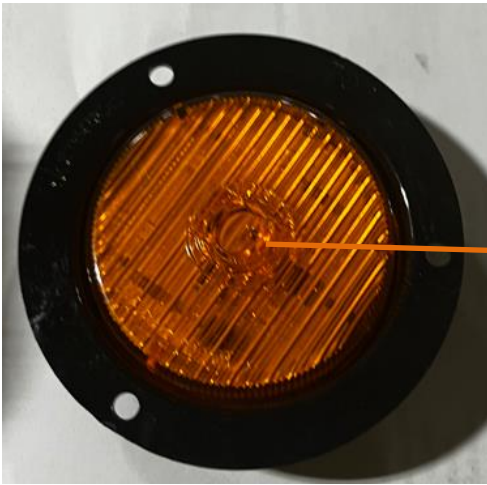
Hex Nipple



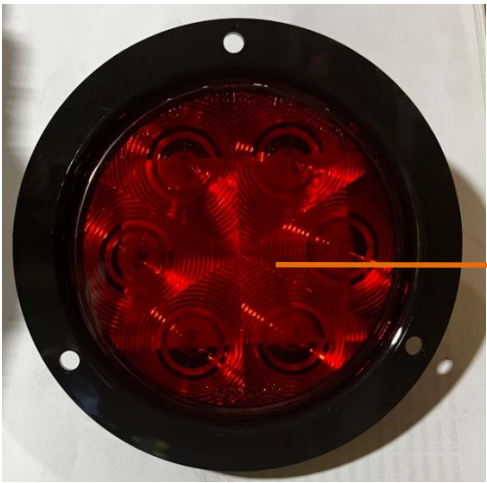
**Brake S-Cam Bushing
KCH**



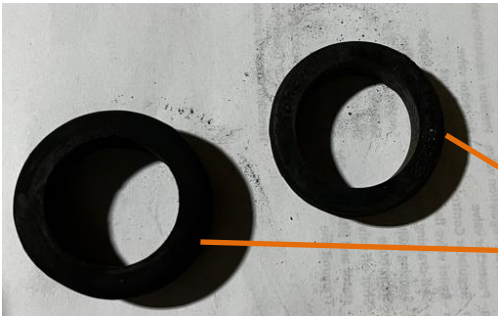
**Seven-way base
SWB**



**Side Marker Light
KSL**



**Tail Light Stop Tail
Turn
KTL**



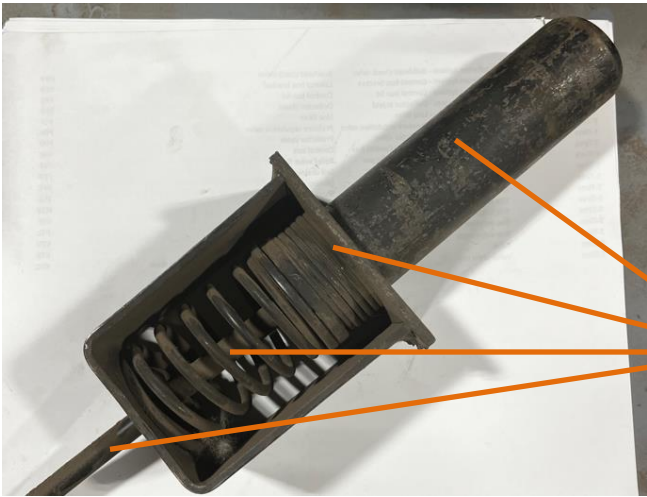
**Grommet
KGM**



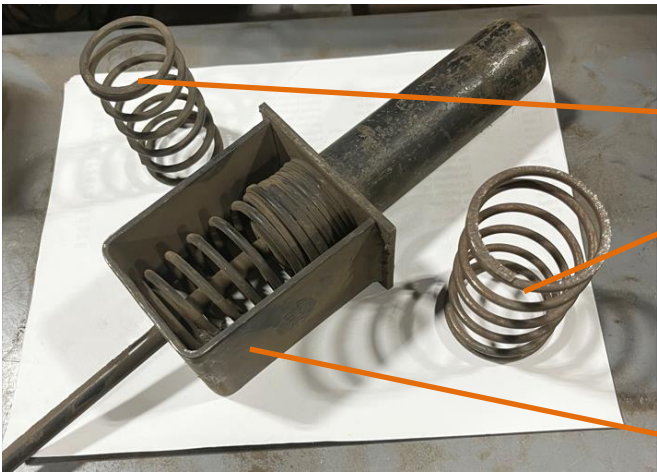
Gooseneck Cross member



**Crossmember
AXM**



**Slider Locking Pin
Assembly
KSX**



**Index Pin Spring / Slider
KIS**

**Slider Index Spring
Housing**



**Index Pin Spring / Slider
KIS**



**Index Pin Slider
KIA**



**Slider Index Pin
Linkage Arm**



**Index Pin Handle / Slider
KIH**

**Slider Pin Cage Assembly
KPC**

**Slider Pin Linkage
Arms, Springs
KLX**



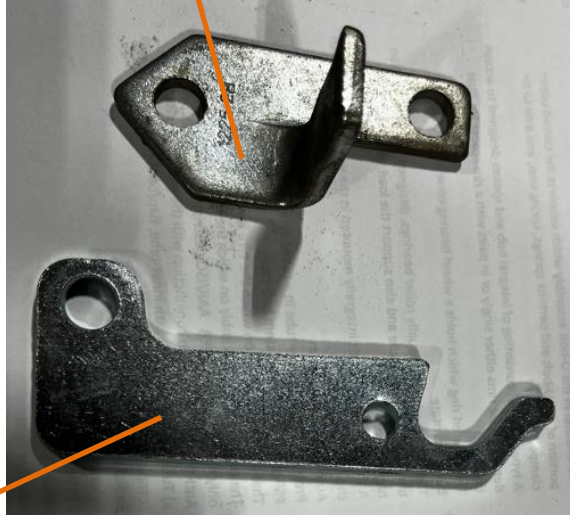
**Slider Handle Return
Spring**



**Twist Lock Housing - Drop in Style
KTK**



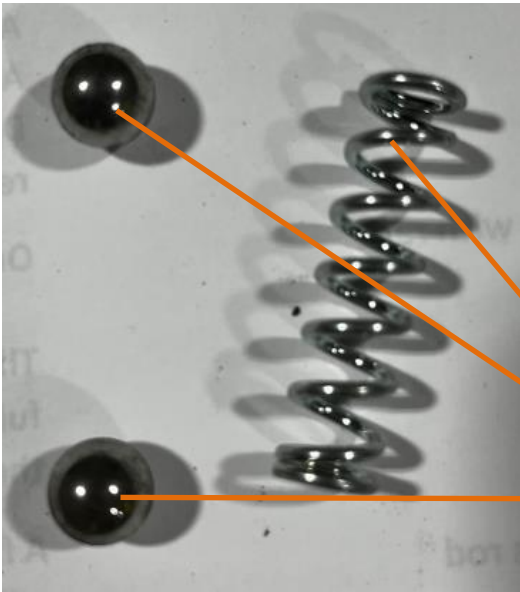
**Twist Lock or Pin Lock
Handle Retainer
KTE**



**Twist Lock or Pin Lock Handle Retainer
KTE**



**Twist Lock Housing -
Drop in Style
KTK**



Detent Ball Spring



**Landing gear
mounting bracket/box
KLM**

**Landing gear crank
shaft
KKS**

**Landing Leg Dust
Cover**

**Landing Gear Brace Ear
KLZ**

**Landing Gear
Mounting Bracket
KLM**

**Landing leg
wheel/shoes axle
KLE**

**Landing Leg
KLL**

**Landing Leg Sandshoe
KLN**





**Landing Gear Mounting Bracket
KLM**

**Landing Leg
KLL**



**Landing gear cross-shaft
KLY**



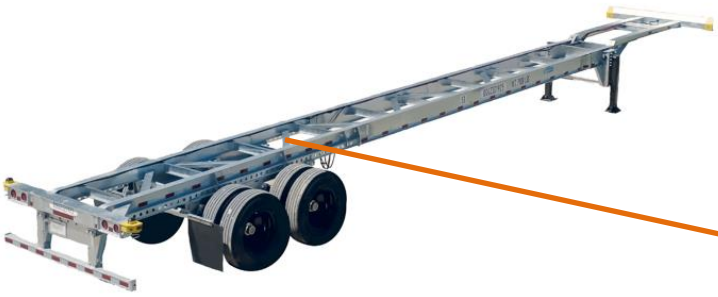
**Equalizer Hanger
KEQ**



**Axle Nut (wheel axle)
KAN**



**Hardware
HWR**



**Container Chassis
MCH**